

APP CRS	Rwy Idg	N/A
050°	TDZE	N/A
	Apt Elev	926

RNAV (GPS)-A

OAKLAND SOUTHWEST (Y47)

RNP APCH - GPS.

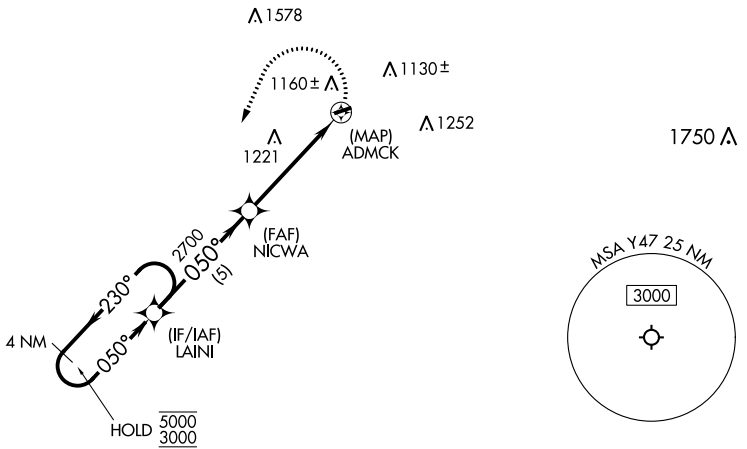
- ▼ Procedure NA at night. Rwy 8 and 26 helicopter visibility reduction below 1 SM NA. Use Detroit Willow Run altimeter setting.
- ▲ NA

MISSED APPROACH: Climbing left turn to 3000 direct LAINI and hold.

YIP ASOS
127.425

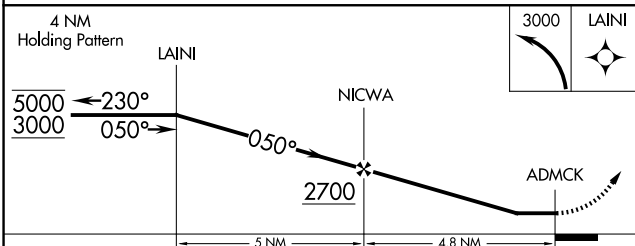
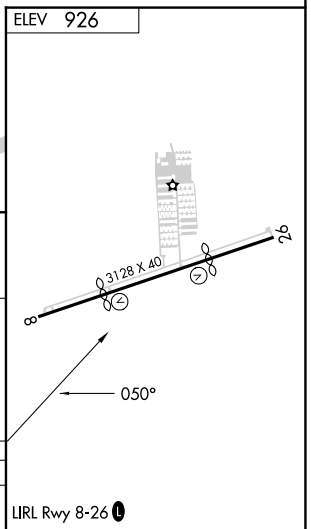
DETROIT APP CON
132.35 284.0

UNICOM
122.7 (CTAF) 0



EC-1, 26 DEC 2024 to 23 JAN 2025

EC-1, 26 DEC 2024 to 23 JAN 2025



CATEGORY	A	B	C	D
CIRCLING	1540-1 614 (700-1)	1580-1 654 (700-1)	NA	

LIRL Rwy 8-26 0