

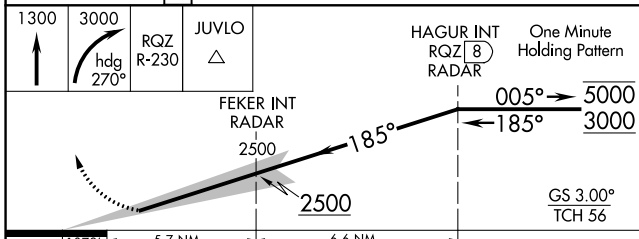
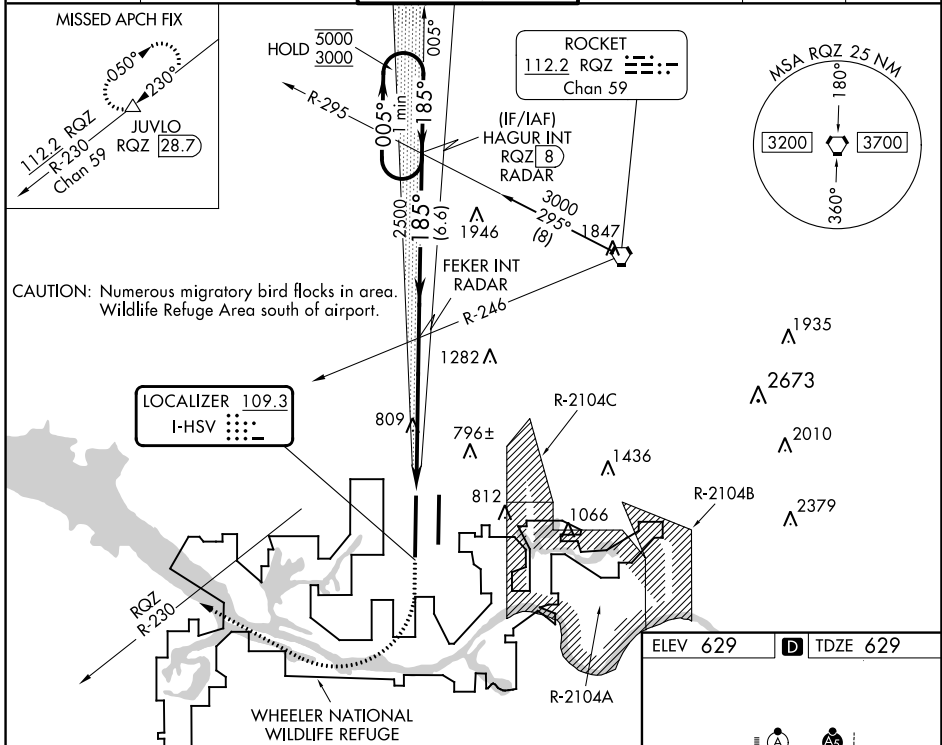
LOC I-HSV 109.3	APP CRS 185°	Rwy Idg 12600 TDZE 629 Apt Elev 629
---------------------------	------------------------	----------------------------------------------------------------

ILS RWY 18R (CAT II)

HUNTSVILLE INTL-CARL T JONES FLD (HSV)

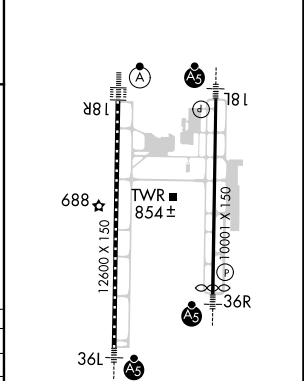
DME required. RADAR required for procedure entry.		ALSF-2	MISSED APPROACH: Climb to 1300 then climbing right turn to 3000 on heading 270° and RQZ R-230 to JUVLO/RQZ 28.7 DME and hold.
Simultaneous approach authorized. DME from RQZ VORTAC. DME use requires simultaneous reception of I-HSV and RQZ DME.			

ATIS 121.25	HUNTSVILLE APP CON * 125.6 354.1	HUNTSVILLE TOWER * 127.6 (CTAF) 0 350.35	GND CON 121.9 269.525	CLNC DEL 120.35	UNICOM 122.95
-----------------------	--------------------------------------------	----------------------------------------------------	---------------------------------	---------------------------	-------------------------



CATEGORY	A	B	C	D
S-ILS 18R	RA 105/12 100 DA 729			

ELEV 629	TDZE 629
----------	----------



CATEGORY II ILS - SPECIAL AIRCREW & AIRCRAFT CERTIFICATION REQUIRED

TDZ/CL Rwy 18R and 36L
HIRL Rwy 18L-36R and 18R-36L

SE-4, 26 DEC 2024 to 23 JAN 2025

SE-4, 26 DEC 2024 to 23 JAN 2025