

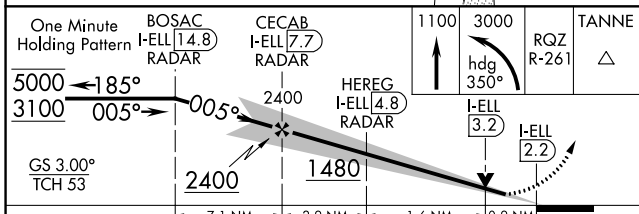
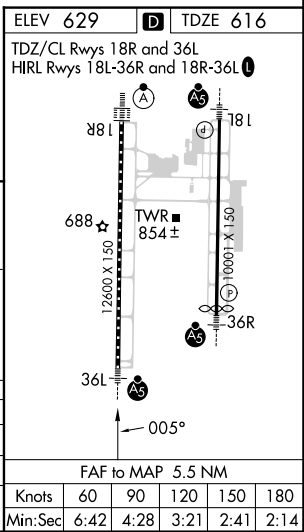
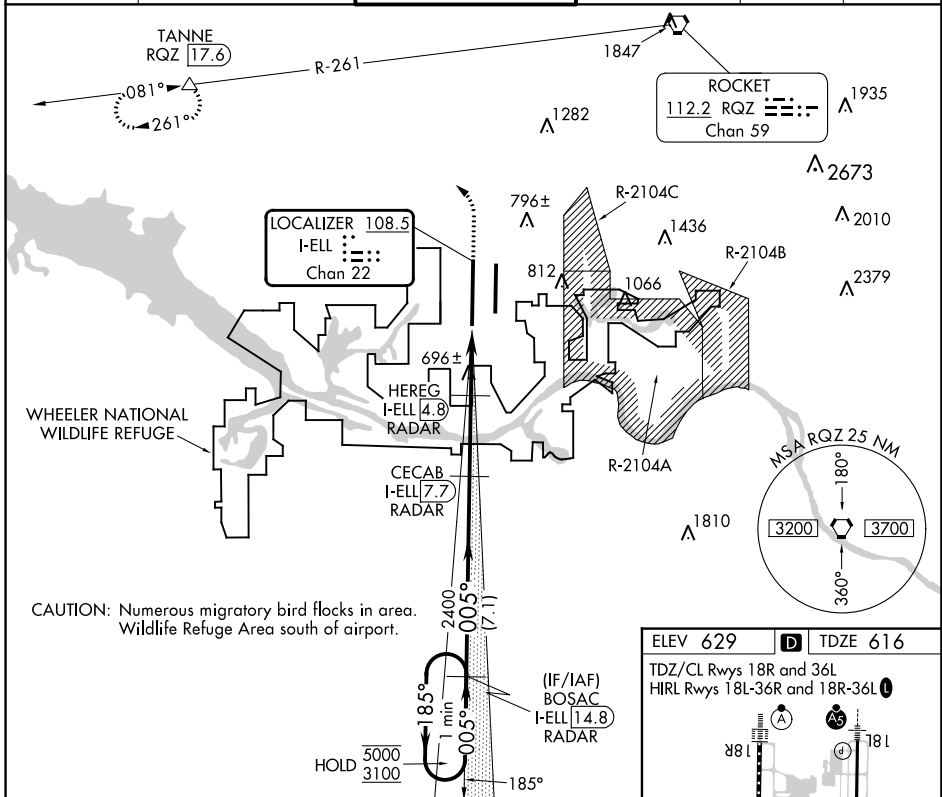
LOC/DME I-ELL 108.5 Chan 22	APP CRS 005°	Rwy Idg 12600 TDZE 616 Apt Elev 629
---	------------------------	--

ILS or LOC RWY 36L

HUNTSVILLE INTL-CARL T JONES FLD (HSV)

DME required. RADAR required for procedure entry.		MALSR 	MISSED APPROACH: Climb to 1100 then climbing left turn to 3000 on heading 350° and RQZ R-261 to TANNE/RQZ 17.6 DME and hold.		
	Circling NA for Cats C/D/E east of Rwy 18L-36R. Simultaneous approach authorized. For inop ALS, increase S-ILS 36L Cat E visibility to RVR 4000, S-LOC 36L Cat C/D/E visibility to RVR 5500. DME from RQZ VORTAC. DME use requires simultaneous reception of I-ELL and RQZ DME.				

ATIS 121.25	HUNTSVILLE APP CON * 125.6 354.1	HUNTSVILLE TOWER * 127.6 (CTAF) 0 350.35	GND CON 121.9 269.525	CLNC DEL 120.35	UNICOM 122.95
-----------------------	--	--	---------------------------------	---------------------------	-------------------------



CATEGORY	A	B	C	D	E
S-ILS 36L	816/18 200 (200-½)				
S-LOC 36L	960/24	344 (400-½)	960/30	344 (400-¾)	
	1160-1	531 (600-1)	1160-1½	1240-2	1260-2¼
			531 (600-½)	611 (700-2)	631 (700-2¼)

FAF to MAP 5.5 NM					
Knots	60	90	120	150	180
Min:Sec	6:42	4:28	3:21	2:41	2:14

SE-4, 26 DEC 2024 to 23 JAN 2025

SE-4, 26 DEC 2024 to 23 JAN 2025