


WAAS CH 82606 W36A	APP CRS 005°	Rwy Idg 12600 TDZE 616 Apt Elev 629
--	------------------------	--

RNAV (GPS) RWY 36L

HUNTSVILLE INTL-CARL T JONES FLD (HSV)

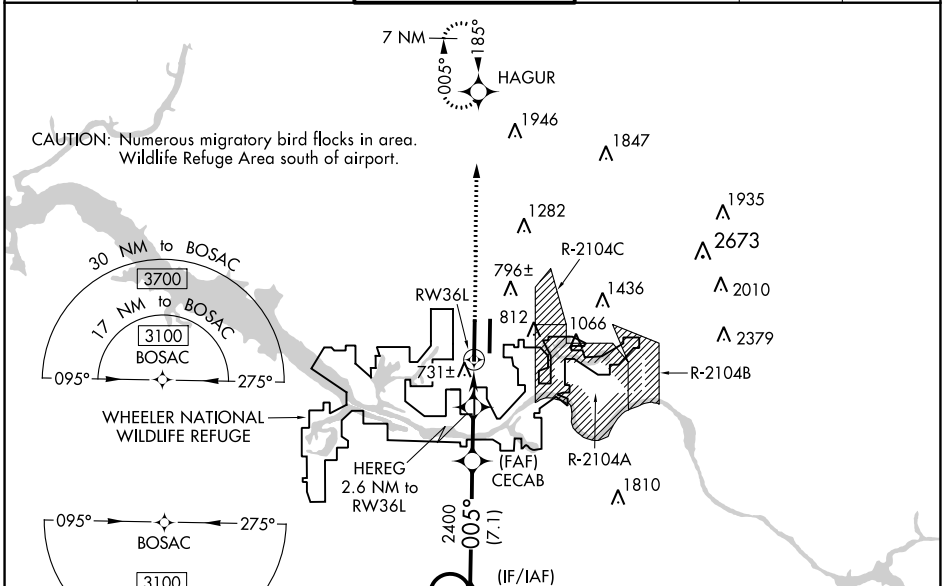
RNP APCH-GPS.

ASR Circling NA for Cats C/D/E east of Rwy 18L-36R. Simultaneous approach authorized. LNAV procedure NA during simultaneous operations. Use of FD or AP required during simultaneous operations. For uncompensated Baro-VNAV systems, LNAV/VNAV NA below -8°C or above 54°C. For inop ALS, increase LPV Cat E visibility to RVR 4000, LNAV/VNAV all Cats visibility to RVR 4500, and LNAV Cat E visibility to RVR 6000.

MALSR 

MISSED APPROACH: Climb to 3000 direct HAGUR and hold.

ATIS 121.25	HUNTSVILLE APP CON * 125.6 354.1	HUNTSVILLE TOWER * 127.6 (CTAF) 350.35	GND CON 121.9 269.525	CLNC DEL 120.35	UNICOM 122.95
-----------------------	--	--	---------------------------------	---------------------------	-------------------------

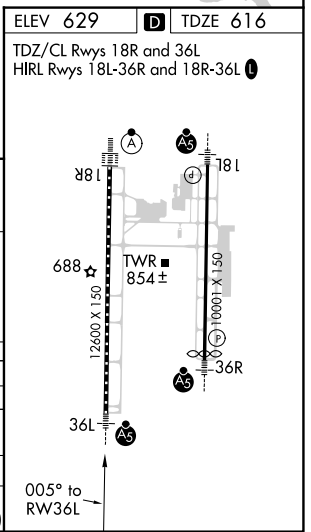


ELEV 629 **D** TDZE 616

TDZ/CL Rwys 18R and 36L
HIRL Rwys 18L-36R and 18R-36L

Profile view: 3000 HAGUR, 185°, 005°, 3100, 185°, 005°, 2400, 1480, 1.1 NM to RW36L, RW36L, 7.1 NM, 2.9 NM, 1.5 NM, 1.1 NM, 5000 Holding Pattern BOSAC, 7 NM, 185°, 3100, 185°, 005°, GP 3.00° TCH 53.

CATEGORY	A	B	C	D	E
LPV DA		816/18	200 (200-½)		
LNAV/VNAV DA		892/24	276 (300-½)		
LNAV MDA	1000/24	384 (400-½)	1000/35	384 (400-¾)	
CIRCLING	1160-1	531 (600-1)	1160-1½ 531 (600-1½)	1240-2 611 (700-2)	1260-2¼ 631 (700-2¼)



SE-4, 26 DEC 2024 to 23 JAN 2025

SE-4, 26 DEC 2024 to 23 JAN 2025