

LOC/DME I-MDK <b>111.75</b> Chan 54 (Y)	APP CRS <b>168°</b>	Rwy ldg <b>8605</b> TDZE <b>27</b> Apt Elev <b>27</b>
---	------------------------	---

# ILS or LOC RWY 17L

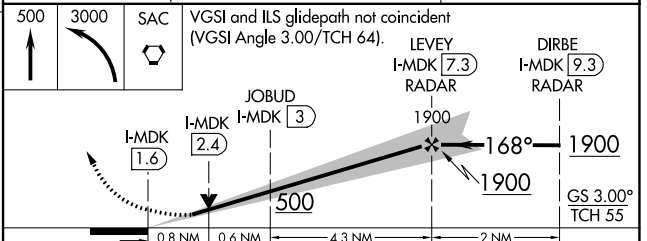
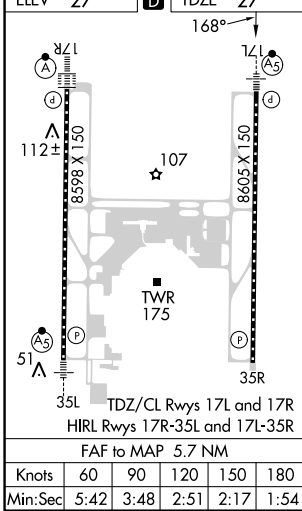
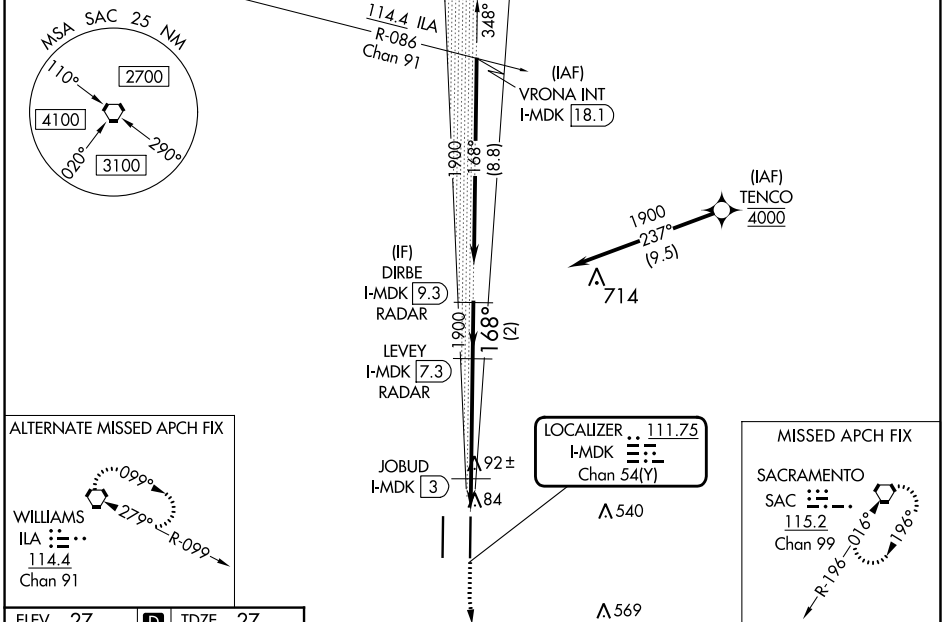
SACRAMENTO INTL (SMF)

Aircraft not GPS equipped - RADAR required for procedure entry.  
DME or RADAR required. RNP APCH-GPS. From TENCO.

**MAJRS** MISSED APPROACH: Climb to 500 then climbing left turn to 3000 direct SAC VORTAC and hold.

**⚠** Simultaneous approach authorized. Circling NA west of Rwy 17L-35R.  
**⚠** For inop ALS, increase S-LOC 17L Cat C/D visibility to 1 3/8 SM and JOBUD fix minimums S-LOC 17L Cat C/D visibility to RVR 4500.

D-ATIS <b>126.75</b>	NORCAL APP CON <b>125.4 259.1</b> (W-NE) <b>125.25 257.9</b> (SW) <b>127.4 317.5</b> (E-SE)	CAPITOL TOWER <b>125.7 256.7</b>	GND CON <b>121.7 256.7</b>	CLNC DEL <b>121.1 256.7</b>	CPDLC
-------------------------	--	-------------------------------------	-------------------------------	--------------------------------	-------



CATEGORY	A	B	C	D
S-ILS 17L	227/18 200 (200-1/2)			
S-LOC 17L	500/24	473 (500-1/2)	500/50	473 (500-1)
<b>C</b> CIRCLING	500-1	473 (500-1)	500-1 1/2 473 (500-1 1/2)	840-2 3/4 813 (900-2 3/4)
JOBUD FIX MINIMUMS (DME REQUIRED)				
S-LOC 17L	340/24 313 (400-1/2)			
<b>C</b> CIRCLING	400-1 373 (400-1)	480-1 453 (500-1)	480-1 1/2 453 (500-1 1/2)	840-2 3/4 813 (900-2 3/4)

SW-2, 26 DEC 2024 to 23 JAN 2025

SW-2, 26 DEC 2024 to 23 JAN 2025