

WAAS CH 81832 W36A	APP CRS 356°	Rwy Idg TDZE Apt Elev	3100 99 103
--	------------------------	-----------------------------	--

RNAV (GPS) RWY 36

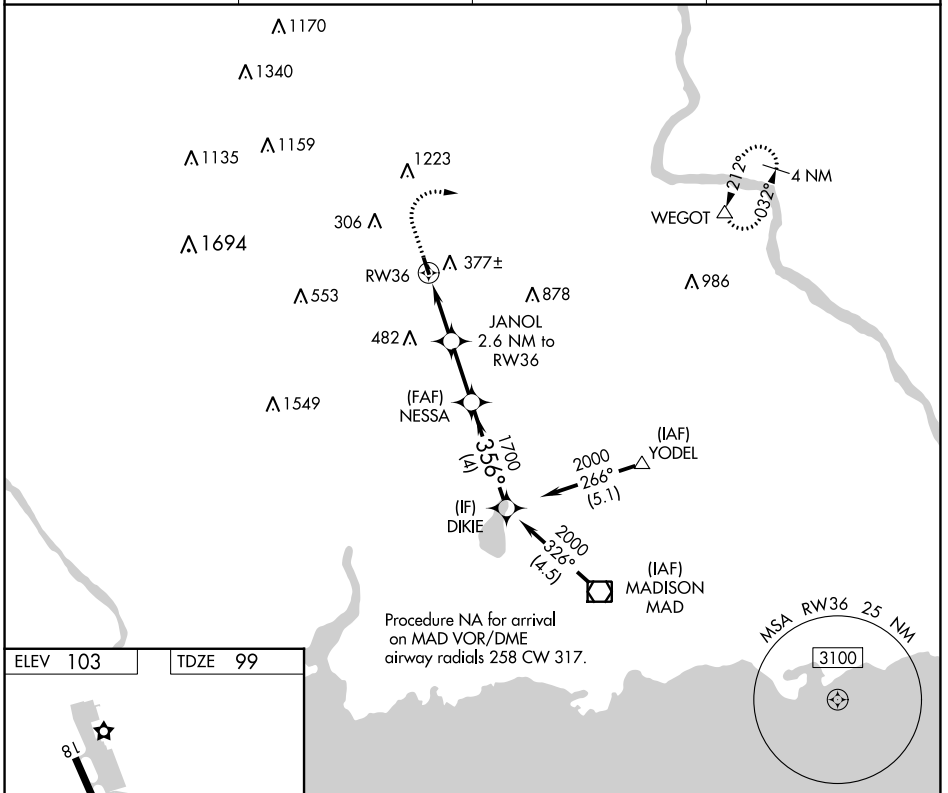
MERIDEN MARKHAM MUNI (MMK)

RNP APCH.

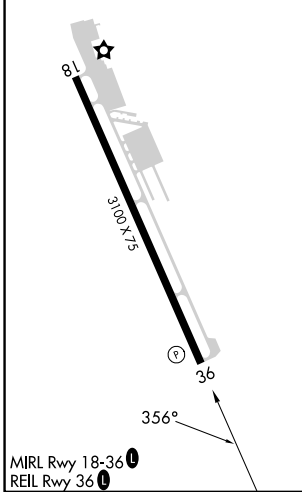
- Procedure NA at night.
- Rwy 36 helicopter visibility reduction below 1 SM NA.

MISSED APPROACH: Climb to 800 then climbing right turn to 2500 direct WEGOT and hold.

ASOS 134.925	BRADLEY APP CON 127.8 269.325	CLNC DEL 120.65	UNICOM 123.05 (CTAF)
------------------------	---	---------------------------	--------------------------------

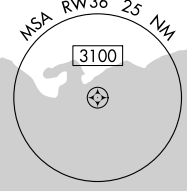


ELEV 103	TDZE 99
----------	---------



MIRL Rwy 18-36
REIL Rwy 36

800	2500	WEGOT	Visual Segment - Obstacles.			
↑	↷	△				
		JANOL				
		2.6 NM to RW36				
		NESSA				
		1700				
		DIKIE				
		2000				
		356°				
		960				
		2.6 NM	2.3 NM		4 NM	
CATEGORY	A	B	C	D		
LP MDA	660-1	561 (600-1)	NA			
LNAV MDA	760-1	661 (700-1)	NA			
CIRCLING	780-1	677 (700-1)	NA			



NE-1, 26 DEC 2024 to 23 JAN 2025

NE-1, 26 DEC 2024 to 23 JAN 2025