

WAAS CH <b>70538</b> <b>W17A</b>	APP CRS <b>168°</b>	Rwy Idg <b>5010</b> TDZE <b>943</b> Apt Elev <b>951</b>
--	------------------------	---

# RNAV (GPS) RWY 17

JACKSON COUNTY (JCA)

RNP APCH-GPS.

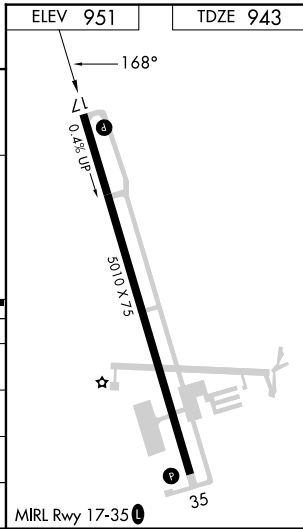
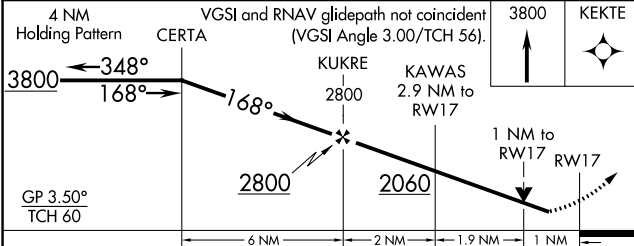
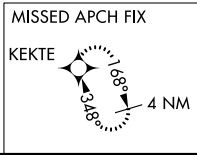
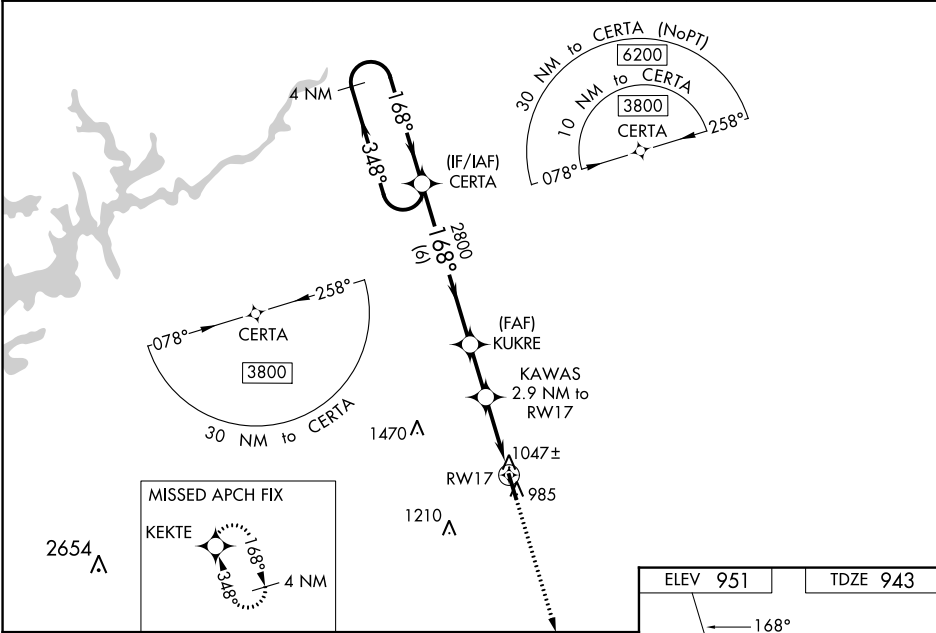
**⚠** For uncompensated Baro-VNAV systems, LNAV/VNAV NA below -16°C or above 53°C.  
**⚠** Circling NA for Cat D west of Rwy 17-35. Baro-VNAV and VDP NA when using Winder altimeter setting. Rwy 17 helicopter visibility reduction below 3/4 SM NA. When local altimeter setting not received, use Winder altimeter setting; increase LPV DA to 1310 feet; increase LNAV/VNAV DA to 1363 feet; increase all MDAs 40 feet and LNAV visibility Cats C/D 1/8 SM.

MISSED APPROACH: Climb to 3800 direct KEKTE and hold.

AWOS-3PT  
**118.125**

ATLANTA APP CON \*  
**132.475 291.1**

UNICOM  
**122.975 (CTAF)** **📶**



CATEGORY	A	B	C	D
LPV DA	1279-1	336 (400-1)		NA
LNAV/VNAV DA	1332-1 1/8	389 (400-1 1/8)		NA
LNAV MDA	1320-1	377 (400-1)		
<b>📶</b> CIRCLING	1440-1	489 (500-1)	1580-1 3/4 629 (700-1 3/4)	1580-2 629 (700-2)

SE-4, 26 DEC 2024 to 23 JAN 2025

SE-4, 26 DEC 2024 to 23 JAN 2025