

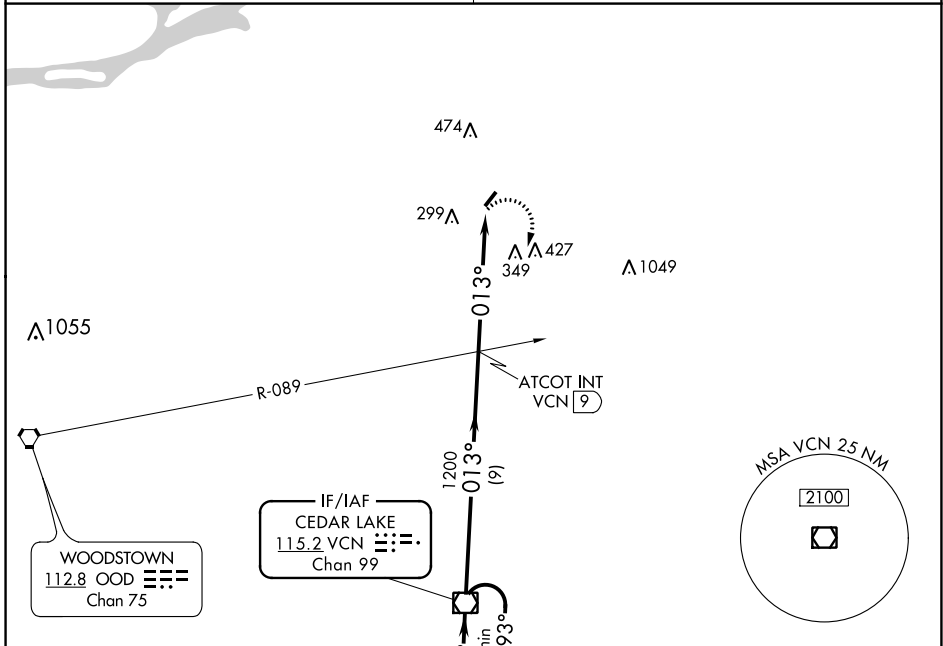
VOR/DME VCN 115.2 Chan 99	APP CRS 013°	Rwy Idg TDZE Apt Elev N/A N/A 150
---	------------------------	---

VOR-B
PINE VALLEY (19N)

Procedure NA at night. Visibility reduction by helicopters NA.
NA Use Mount Holly altimeter setting, when not received, use Philadelphia Intl altimeter setting and increase MDA 20 feet.

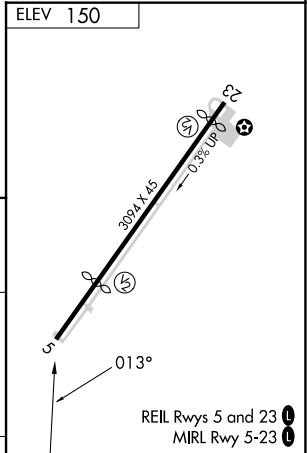
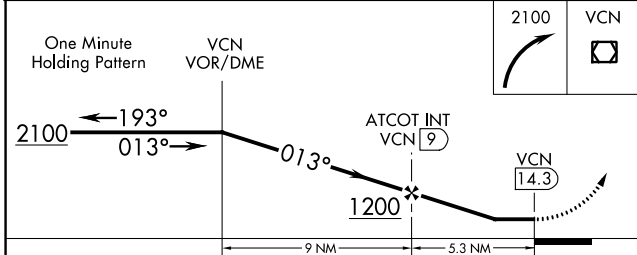
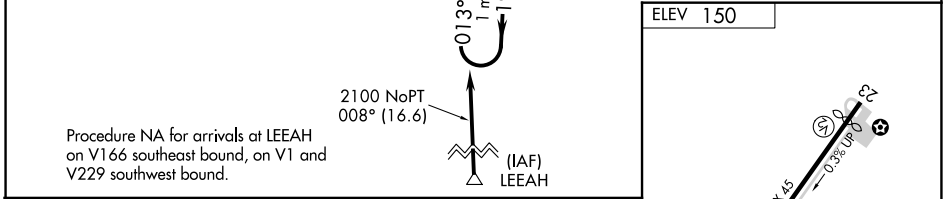
MISSED APPROACH: Climbing right turn to 2100 direct VCN VOR/DME and hold.

MC GUIRE APP CON 126.475 363.8	UNICOM 123.0 (CTAF)
--	-------------------------------



NE-2, 26 DEC 2024 to 23 JAN 2025

NE-2, 26 DEC 2024 to 23 JAN 2025



CATEGORY	A	B	C	D	FAF to MAP 5.3 NM					
CIRCLING	900-1 750 (800-1)		NA		Knots	60	90	120	150	180
					Min:Sec	5:18	3:32	2:39	2:07	1:46