

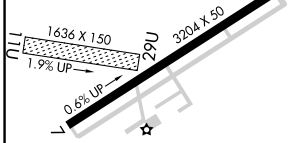
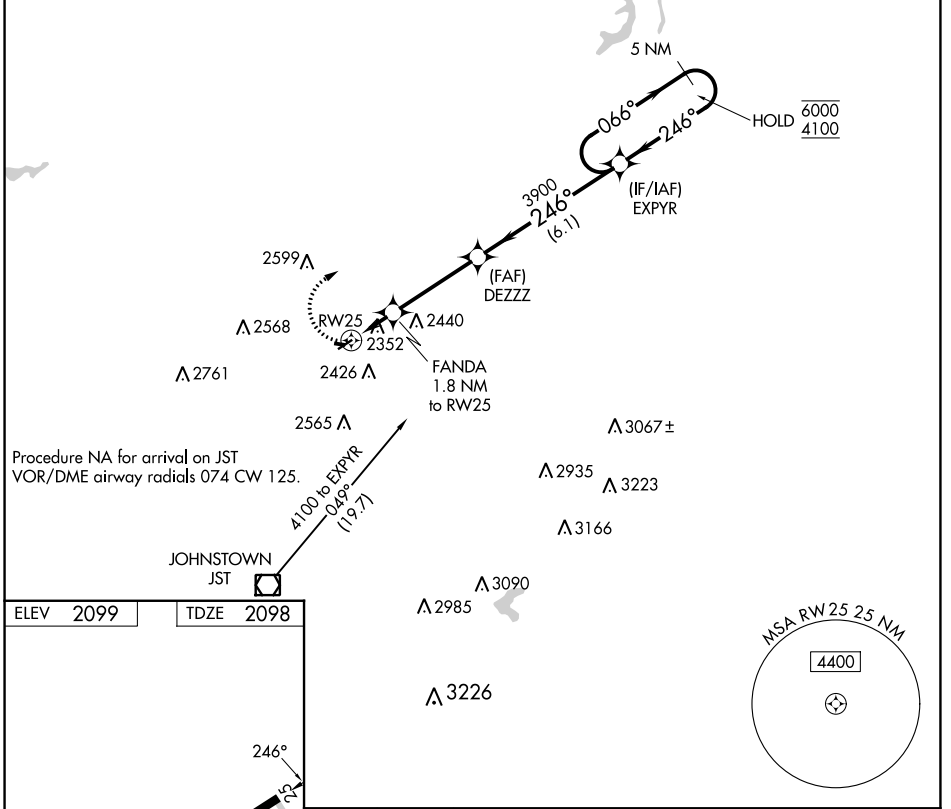
| | | |
|-------------|----------|-------------|
| APP CRS | Rwy Idg | 3204 |
| 246° | TDZE | 2098 |
| | Apt Elev | 2099 |

RNAV (GPS) RWY 25

EBENSBURG (9G8)

| | | |
|---|--|---|
| RNP APCH - GPS. | | MISSED APPROACH: Climbing right turn to 4100 direct EXPYR and hold. |
| <p>⚠ Procedure NA at night. Rwy 25 helicopter visibility reduction below 1 SM NA.</p> <p>⚠ Obtain local altimeter setting on CTAF; when not received, use Johnstown altimeter setting and increase all MDA 60 feet and visibility Cat C ¼ SM.</p> | | |

| | |
|---|---------------------------------|
| JOHNSTOWN APP CON ★ 121.2 299.2 | UNICOM 122.8 (CTAF) 0 |
|---|---------------------------------|



| | | | | |
|----------|-----------------------------|-------------|-------------------------|----------------------|
| | Visual Segment - Obstacles. | | | |
| | 4100 | EXPYR | DEZZZ | 5 NM Holding Pattern |
| | | | | |
| CATEGORY | A | B | C | D |
| LNAV MDA | 2620-1 | 522 (600-1) | 2620-1½ 522 (600-1½) | NA |

NE-4, 26 DEC 2024 to 23 JAN 2025

NE-4, 26 DEC 2024 to 23 JAN 2025