

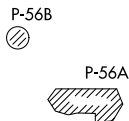
# JDUBB FOUR DEPARTURE (RNAV)

ATIS  
128.175  
CLNC DEL  
351.8  
GND CON  
121.9 351.8  
DAVISON TOWER ★  
124.275 (CTAF) 229.4  
POTOMAC DEP CON  
118.95 257.2

**TOP ALTITUDE:  
3000**

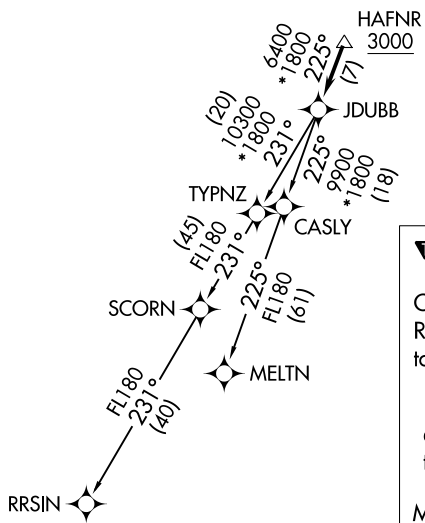
### TAKEOFF MINIMUMS:

Rwy 14: Standard.  
Rwy 32: 400-2 or standard with minimum  
climb of 300' per NM to 500.



NE-3, 26 DEC 2024 to 23 JAN 2025

NE-3, 26 DEC 2024 to 23 JAN 2025



NOTE: RNAV 1.  
NOTE: RADAR required.  
NOTE: DME/DME/IRU or GPS required.  
NOTE: Turbo-jets only.

**▼ DEPARTURE ROUTE DESCRIPTION**

Climb on heading assigned by ATC, expect RADAR vectors to HAFNR, then on track 225° to JDUBB, thence....

....on assigned transition, maintain 3000, expect clearance to filed altitude within ten (10) minutes after departure.

MELTN TRANSITION (JDUBB4.MELTN)  
RRSIN TRANSITION (JDUBB4.RRSIN)

NOTE: Chart not to scale.