

NDB MNI	APP CRS	Rwy Idg	3602
381	026°	TDZE	100
		Apt Elev	103

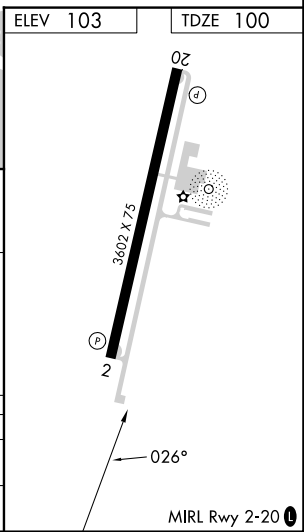
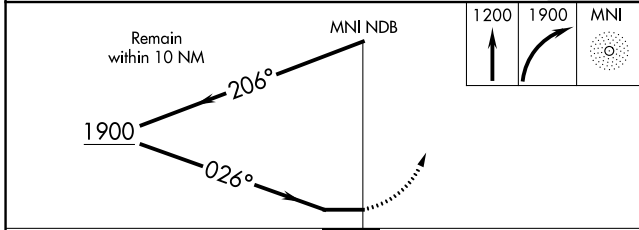
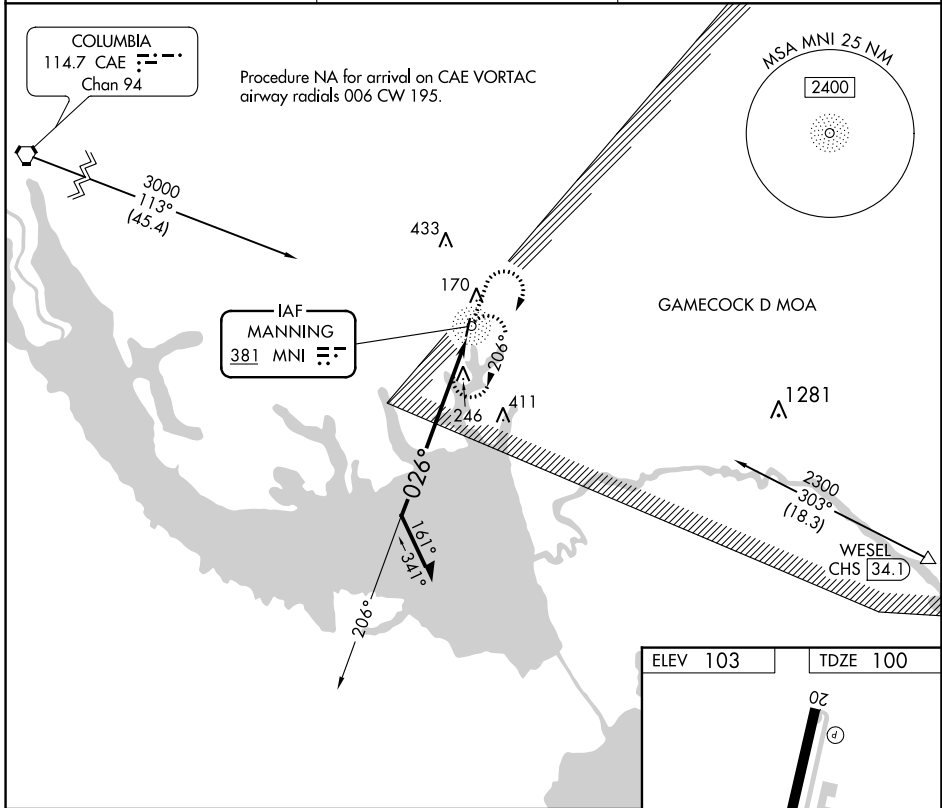
NDB RWY 2

SANTEE COOPER RGNL (MNI)

⚠ Rwy 2 helicopter visibility reduction below 1 SM NA. Procedure NA at night.

⚠ MISSED APPROACH: Climb to 1200, then climbing right turn to 1900 direct MNI NDB and hold, continue climb-in-hold to 1900.

AWOS-3 120.175	SHAW APP CON★ 125.4 318.1	UNICOM 122.8 (CTAF) 0
--------------------------	-------------------------------------	---------------------------------



CATEGORY	A	B	C	D
S-2	660-1	560 (600-1)	660-1 $\frac{3}{8}$	560 (600-1 $\frac{3}{8}$)
C CIRCLING	660-1	557 (600-1)	800-2 697 (700-2)	800-2 $\frac{1}{4}$ 697 (700-2 $\frac{1}{4}$)

SE-2, 26 DEC 2024 to 23 JAN 2025

SE-2, 26 DEC 2024 to 23 JAN 2025