

(DAWNN1.DAWNN) 23334
DAWNN ONE DEPARTURE

AL-5514 (FAA)

SHELBYVILLE MUNI (G EZ)
SHELBYVILLE, INDIANA

ASOS
121.55
INDIANAPOLIS DEP CON
127.15 317.8

BRICKYARD
116.3 VHP
Chan 110

**TOP ALTITUDE:
ASSIGNED BY ATC**

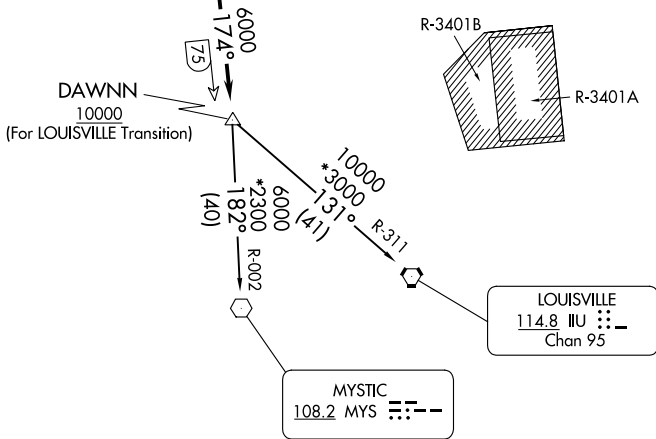
TERRE HAUTE
115.3 TTH
Chan 100

HOOSIER
110.2 OOM
Chan 39

SNEVA
RADAR

FOYTT
RADAR

TAKEOFF MINIMUMS:
Rwys 1, 19: Standard.
Rwys 9, 27: NA - Environmental



- NOTE: RADAR required.
- NOTE: Select appropriate localizer/DME frequency/channel prior to departure.
- NOTE: Turbojets accelerate to 250K until reaching 10000, if unable advise ATC.
- NOTE: Assigned to aircraft with a requested altitude of 11000 or above.

(NARRATIVE ON FOLLOWING PAGE)

NOTE: Chart not to scale.

DAWNN ONE DEPARTURE
(DAWNN1.DAWNN) 07DEC17

SHELBYVILLE, INDIANA
SHELBYVILLE MUNI (G EZ)

EC-2, 26 DEC 2024 to 23 JAN 2025

EC-2, 26 DEC 2024 to 23 JAN 2025



DEPARTURE ROUTE DESCRIPTION

DEPARTING ALL OTHER AUTHORIZED RUNWAYS/AIRPORTS: Climb on assigned heading to assigned altitude. Thence....

....on RADAR vectors to join VHP R-174 to DAWNN INT then on transition or assigned route. Expect clearance to requested altitude ten minutes after departure.

LOUISVILLE TRANSITION (DAWNN1.IIU): From over DAWNN INT on IIU R-311 to IIU VORTAC.

MYSTIC TRANSITION (DAWNN1.MYS): From over DAWNN INT on MYS R-002 to MYS VOR.

EC-2, 26 DEC 2024 to 23 JAN 2025

EC-2, 26 DEC 2024 to 23 JAN 2025