

(MEARZ7.MEARZ) 23334

# MEARZ SEVEN DEPARTURE

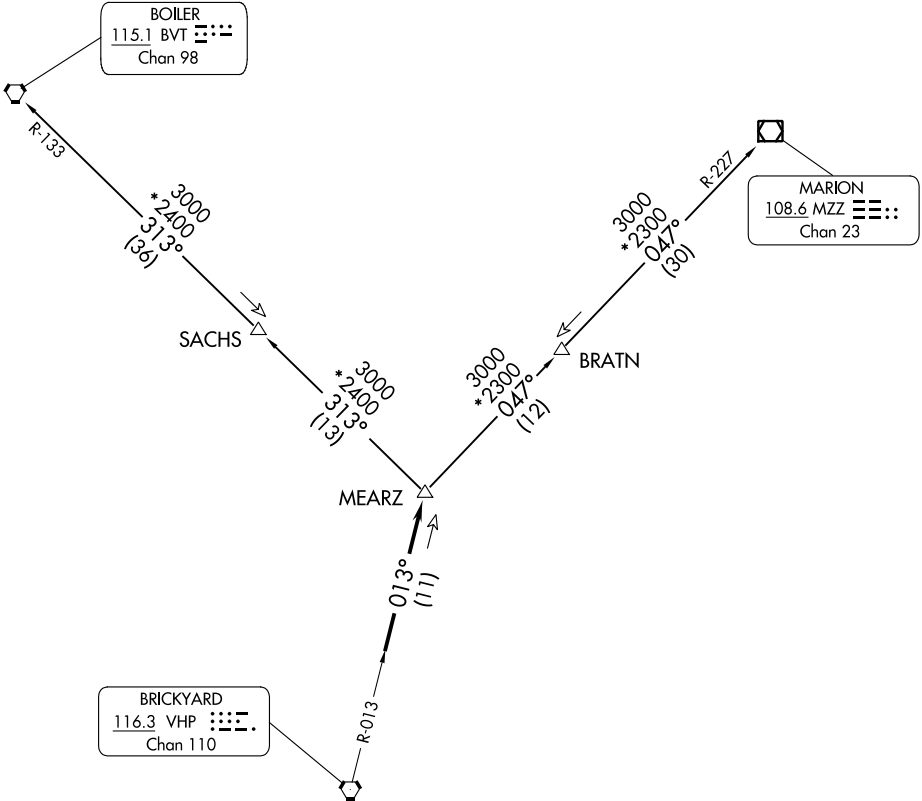
AL-5514 (FAA)

SHELBYVILLE MUNI (GEZ)  
SHELBYVILLE, INDIANA

**TOP ALTITUDE:  
ASSIGNED BY ATC**

RADAR required.

ASOS  
121.55  
INDIANAPOLIS DEP CON  
127.15 317.8

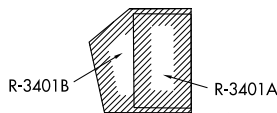


### TAKEOFF MINIMUMS

Rwy 1, 19: Standard.  
Rwy 9, 27: NA - Environmental

- NOTE: Turbojets accelerate to 250K until reaching 10000, if unable advise ATC.
- NOTE: Assigned to aircraft with a requested altitude of 11000 or above.
- NOTE: Select appropriate localizer/DME frequency/channel prior to departure.

(NARRATIVE ON FOLLOWING PAGE)



NOTE: Chart not to scale.

EC-2, 26 DEC 2024 to 23 JAN 2025

EC-2, 26 DEC 2024 to 23 JAN 2025

MEARZ SEVEN DEPARTURE  
(MEARZ7.MEARZ) 19MAY22

SHELBYVILLE, INDIANA  
SHELBYVILLE MUNI (GEZ)



DEPARTURE ROUTE DESCRIPTION

DEPARTING ALL OTHER AUTHORIZED RUNWAYS: Climb on assigned heading to assigned altitude. Thence....

....expect RADAR vectors to join VHP R-013 to MEARZ then on transition or assigned route. Expect clearance to requested altitude ten minutes after departure.

BOILER TRANSITION (MEARZ.BVT): From over MEARZ on BVT R-133 to BVT VORTAC.

MARION TRANSITION (MEARZ.MZZ): From over MEARZ on MZZ R-227 to MZZ VOR/DME.

EC-2, 26 DEC 2024 to 23 JAN 2025

EC-2, 26 DEC 2024 to 23 JAN 2025