

O'NEILL, NEBRASKA

AL-5515 (FAA)

22307

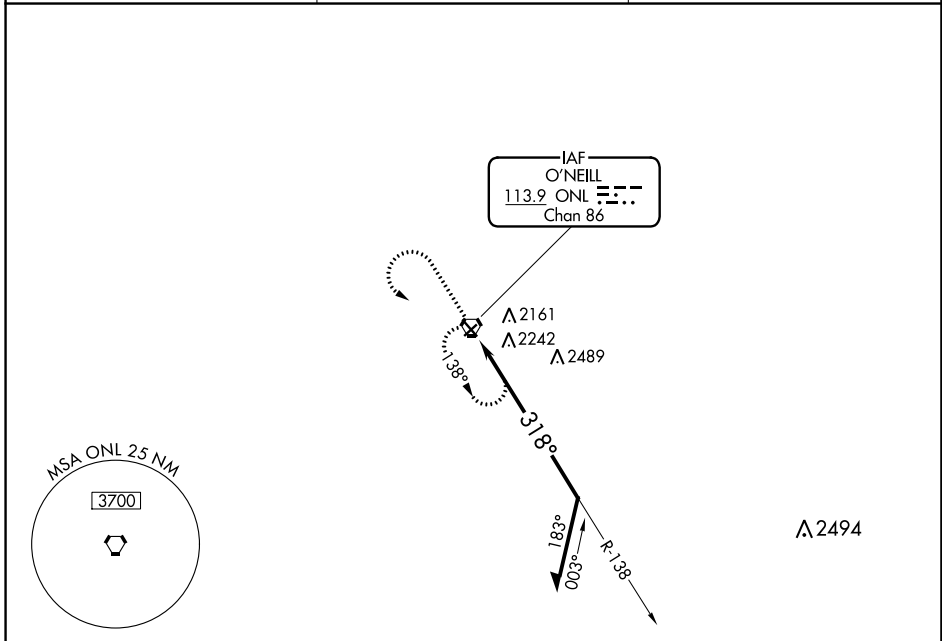
VORTAC ONL 113.9 Chan 86	APP CRS 318°	Rwy Idg TDZE Apt Elev	4408 2032 2034
---------------------------------------	------------------------	-----------------------------	---

VOR RWY 31

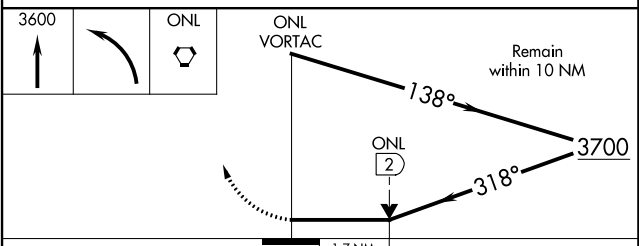
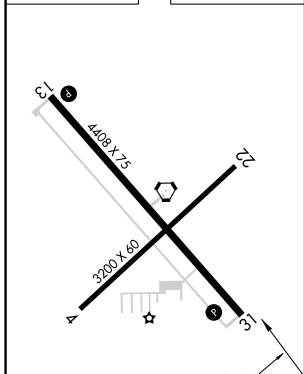
THE O'NEILL MUNI-JOHN L BAKER FLD (ONL)

▽ ▲	Night landing: Rwy 4, 22 NA.	MISSED APPROACH: Climb to 3600 then left turn direct ONL VORTAC and hold.
----------------------	------------------------------	---

AWOS-3 121.125	MINNEAPOLIS CENTER 128.0 257.95	UNICOM 122.8 (CTAF) 0
--------------------------	---	---------------------------------



ELEV 2034	TDZE 2032
-----------	-----------



CATEGORY	A	B	C	D
S-31	2600-1	568 (600-1)	2600-1 $\frac{5}{8}$	568 (600-1 $\frac{5}{8}$)
C CIRCLING	2600-1	566 (600-1)	2680-1 $\frac{3}{4}$ 646 (700-1 $\frac{3}{4}$)	2840-2 $\frac{1}{2}$ 806 (900-2 $\frac{1}{2}$)

O'NEILL, NEBRASKA
Amdt 1E 19MAY22

THE O'NEILL MUNI-JOHN L BAKER FLD (ONL)

42°28'N-98°41'W

VOR RWY 31

NC-2, 26 DEC 2024 to 23 JAN 2025

NC-2, 26 DEC 2024 to 23 JAN 2025