

LOC/DME I-GVL 110.55 Chan 42 (Y)	APP CRS 044°	Rwy Idg 5370 TDZE 1275 Apt Elev 1277
--	------------------------	---

ILS or LOC RWY 5

LEE GILMER MEML (GVL)

DME required.
RADAR required for procedure entry.

⚠ Circling Rwy 11, 29 NA at night.
For inop ALS increase S-LOC 5 Cats C and D visibility to 1 SM.

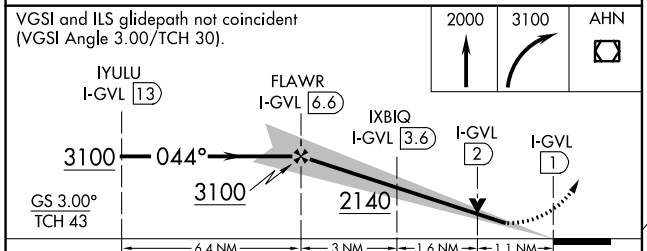
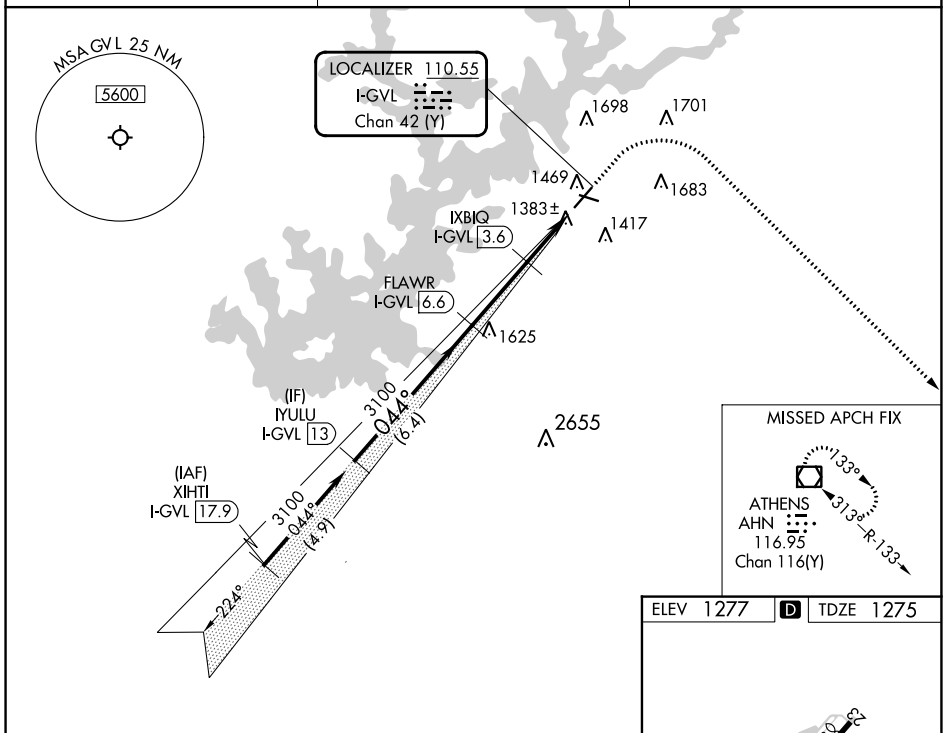
MALSR

MISSED APPROACH: Climb to 2000 then climbing right turn to 3100 direct AHN VOR/DME and hold.

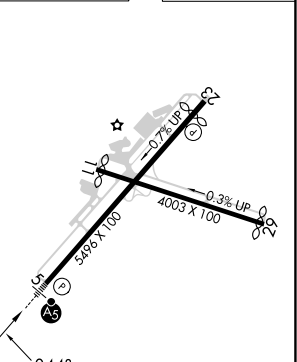
ASOS
126.475

ATLANTA APP CON*
132.475 291.1

UNICOM
123.075 (CTAF) **0**



ELEV 1277 **D** TDZE 1275



CATEGORY	A	B	C	D
S-ILS 5	1475-½ 200 (200-½)			
S-LOC 5	1640-½	365 (400-½)	1640-⅝	365 (400-⅝)
CIRCLING	1780-1 503 (600-1)	2000-1 723 (800-1)	2000-2 723 (800-2)	2020-2½ 743 (800-2½)

Knots					
60	90	120	150	180	
Min:Sec	5:36	3:44	2:48	2:14	1:52

SE-4, 26 DEC 2024 to 23 JAN 2025

SE-4, 26 DEC 2024 to 23 JAN 2025