

WAAS CH <b>70534</b> <b>W27A</b>	APP CRS <b>274°</b>	Rwy Idg TDZE <b>1146</b> Apt Elev <b>1150</b>	<b>4000</b> <b>1146</b> <b>1150</b>
--	------------------------	---	---

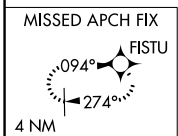
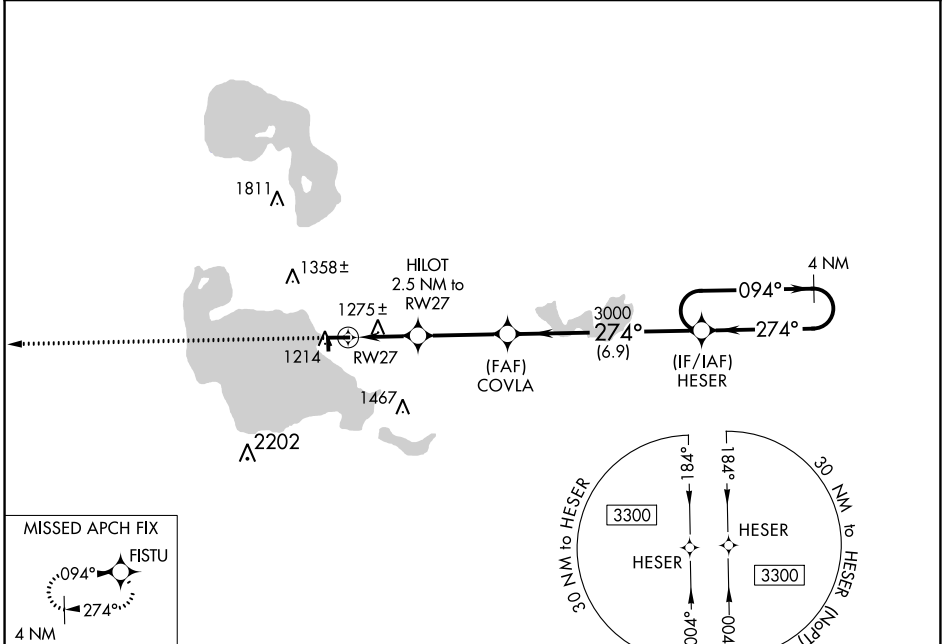
# RNAV (GPS) RWY 27

ROSCOMMON COUNTY/BLODGETT MEML (HTL)

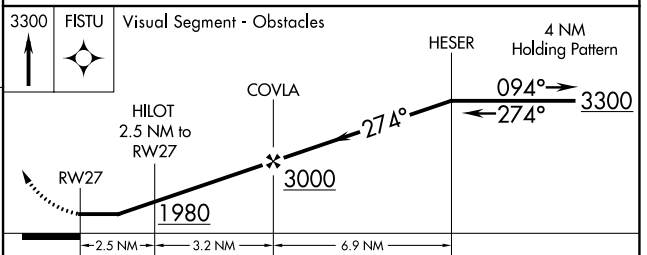
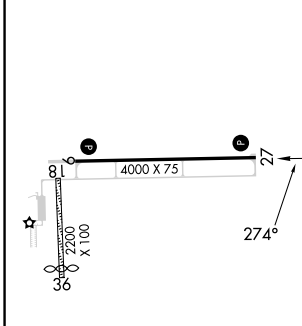
**⚠** When local altimeter setting not received, use Gaylord altimeter setting and increase all MDAs 120 feet and visibility Cat C/D ½ SM. DME/DME RNP-0.3 NA. Procedure NA at night.  
**⚠** Helicopter visibility reduction below 1 SM NA. Circling NA to Rwy's 18, 36.

**MISSED APPROACH:** Climb to 3300 direct FISTU and hold.

ASOS <b>118.05</b>	MINNEAPOLIS CENTER <b>125.475 269.45</b>	UNICOM <b>122.8 (CTAF) 0</b>
-----------------------	---	---------------------------------



ELEV <b>1150</b>	TDZE <b>1146</b>
------------------	------------------



CATEGORY	A	B	C	D
LP MDA	1540-1	394 (400-1)	1540-1¼	394 (400-1¼)
LNAV MDA	1560-1	414 (500-1)	1560-1¼	414 (500-1¼)
CIRCLING	1600-1	450 (500-1)	1700-1½ 550 (600-1½)	1820-2 670 (700-2)

EC-1, 26 DEC 2024 to 23 JAN 2025

EC-1, 26 DEC 2024 to 23 JAN 2025