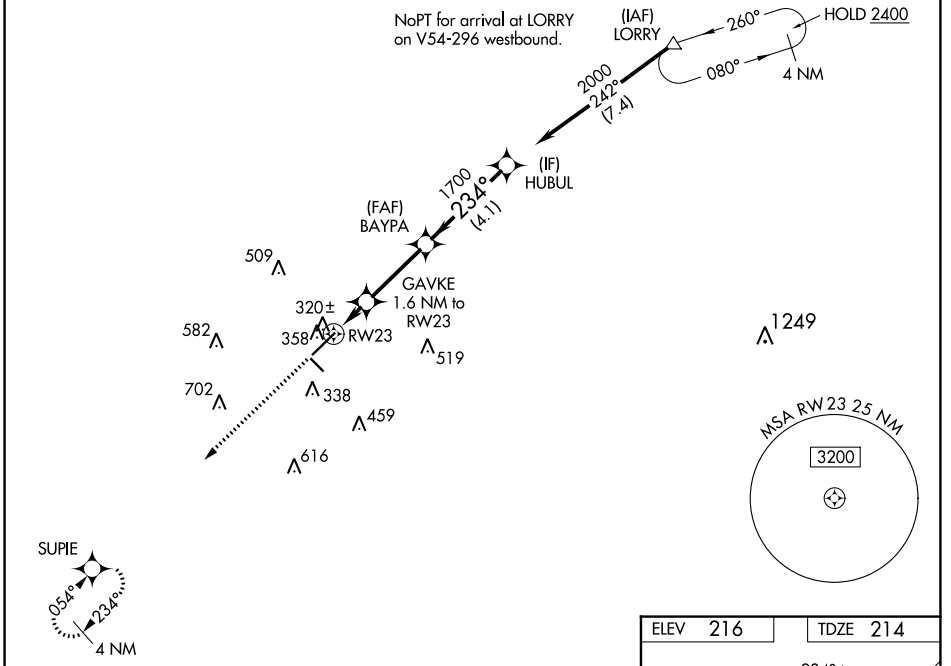


WAAS CH 61023 W23A	APP CRS 234°	Rwy Idg TDZE 214 Apt Elev 216	6316
--	------------------------	---	-------------

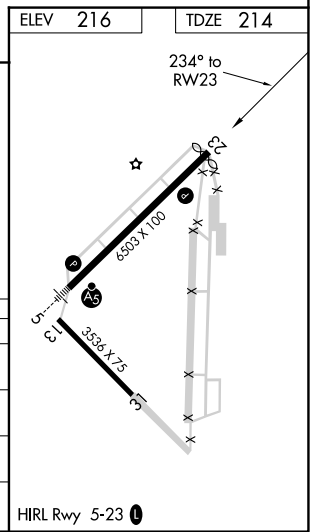
RNAV (GPS) RWY 23

LAURINBURG/MAXTON (MEB)

RNP APCH-GPS.		MISSED APPROACH: Climb to 2000 direct SUPIE and hold.	
<p>▽ Circling to Rwy 13 and 31 NA at night. Rwy 23 helicopter visibility reduction below 3/4 SM NA. For uncompensated Baro-VNAV systems, LNAV/VNAV NA below -11°C or above 54°C.</p>	ASOS 134.125	FAYETTEVILLE APP CON 127.8 343.725	GCO 135.075
			UNICOM 122.8 (CTAF) 0



2000	SUPIE				
↑	☆				
		GAVKE 1.6 NM to RWY 23	BAYPA 1700	HUBUL 2000	
		1.1 NM to RWY 23	1700	234°	GP 3.00° TCH 38
		760	1700	2000	
		1.1 NM	0.5 NM	3 NM	4.1 NM
CATEGORY	A	B	C	D	
LPV DA		483-7/8	269 (300-7/8)		
LNAV/VNAV DA		483-7/8	269 (300-7/8)		
LNAV MDA		580-1	366 (400-1)		
C CIRCLING	740-1	524 (600-1)	780-1 1/2 564 (600-1 1/2)	1020-2 1/2 804 (900-2 1/2)	



SE-2, 26 DEC 2024 to 23 JAN 2025

SE-2, 26 DEC 2024 to 23 JAN 2025