

LOC/DME I-PGV 110.7 Chan 44	APP CRS 197°	Rwy Idg 6505 TDZE 25 Apt Elev 26
---	------------------------	---

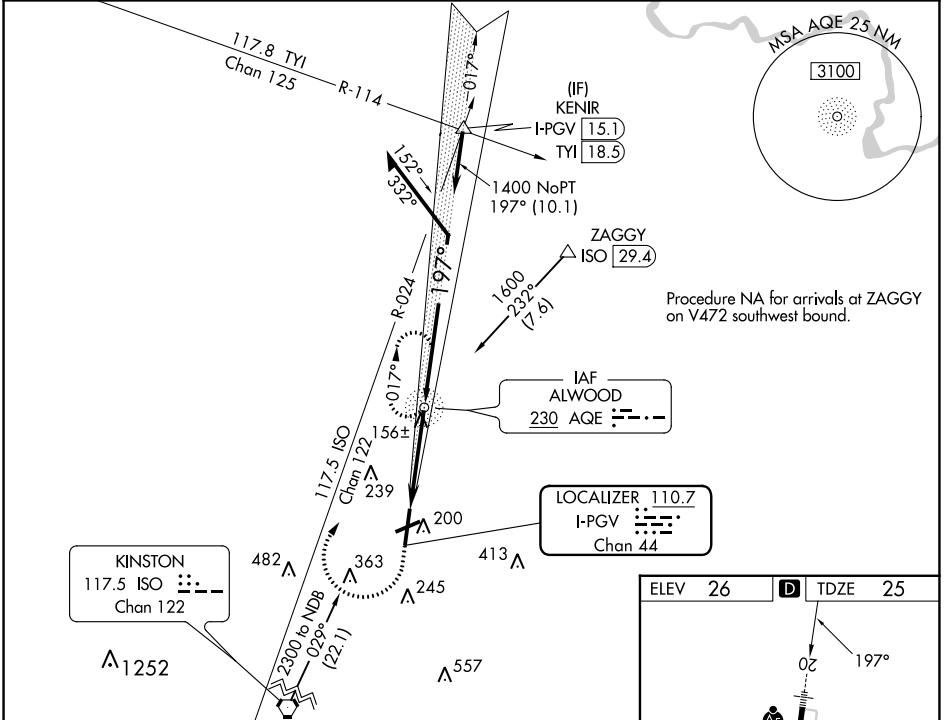
ILS Z or LOC Z RWY 20

PITT-GREENVILLE (PGV)

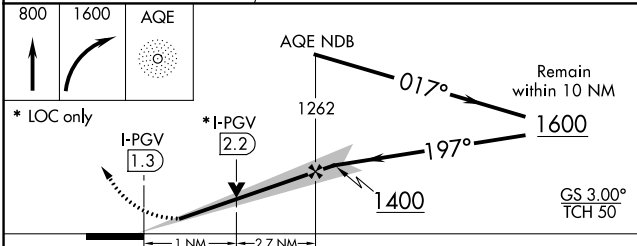
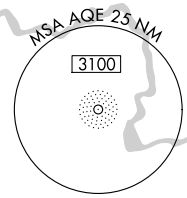
NA ADF required. VDP NA with Washington altimeter setting. When local altimeter setting not received use Washington altimeter and increase S-ILS 20 DA to 298 feet; increase all MDAs 60 feet and S-LOC 20 visibility Cat C/D 1/2 SM, and Circling visibility Cat D 1/4 SM. For inop ALS when using Washington altimeter setting, increase S-ILS 20 all Cats visibility 3/8 SM, and S-LOC 20 visibility Cat A/B 1/4 SM. Inop table does not apply to S-ILS all Cats. Rwy 20 helicopter visibility reduction below 3/4 SM NA. For inop ALS, increase S-LOC 20 visibility Cat A/B 1/4 SM, Cat C/D 3/8 SM.

MALSR MISSED APPROACH: Climb to 800 then climbing right turn to 1600 direct AQE NDB and hold.

AWOS-3 128.425	WASHINGTON CENTER 123.85 279.65	UNICOM 122.8 (CTAF)
--------------------------	---	-------------------------------



Procedure NA for arrivals at ZAGGY on V472 southwest bound.



ELEV 26	D TDZE 25												
HIRL Rwy 2-20 1 MIRL Rwy 8-26 1 REIL Rws 2, 8, and 26													
FAF to MAP 3.7 NM													
CIRCLING	<table border="1"> <tr> <td>Knots</td> <td>60</td> <td>90</td> <td>120</td> <td>150</td> <td>180</td> </tr> <tr> <td>Min:Sec</td> <td>3:42</td> <td>2:28</td> <td>1:51</td> <td>1:29</td> <td>1:14</td> </tr> </table>	Knots	60	90	120	150	180	Min:Sec	3:42	2:28	1:51	1:29	1:14
Knots	60	90	120	150	180								
Min:Sec	3:42	2:28	1:51	1:29	1:14								

CATEGORY	A	B	C	D
S-ILS 20		257-3/4	231 (300-3/4)	
S-LOC 20		420-3/4	394 (400-3/4)	
C CIRCLING	600-1 574 (600-1)	620-1 594 (600-1)	700-2 674 (700-2)	800-2 1/2 774 (800-2 1/2)

SE-2, 26 DEC 2024 to 23 JAN 2025

SE-2, 26 DEC 2024 to 23 JAN 2025