

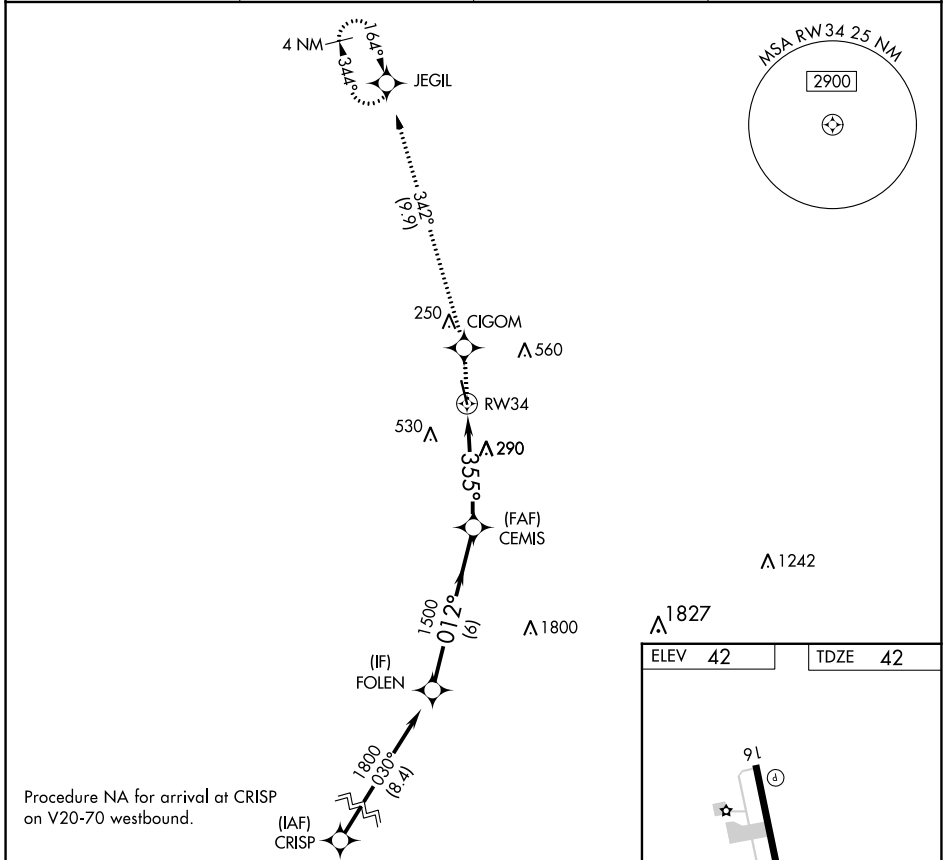
APP CRS 355°	Rwy Idg 5001
	TDZE 42
	Apt Elev 42

RNAV (GPS) RWY 34

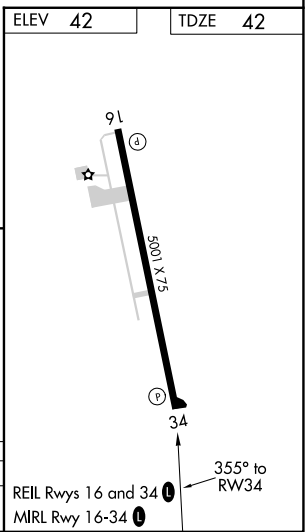
EUNICE (4R7)

RNP APCH.	MISSED APPROACH: Climb to 1700 direct CIGOM and on 342° track to JEGIL and hold.
<p>Procedure NA at night. Rwy 34 helicopter visibility reduction below 1 SM NA. Use Lafayette Rgnl/Paul Fournet Fld altimeter setting.</p>	

LFT ASOS 134.05	LAFAYETTE APP CON ★ 128.7 268.7	GCO 135.075	UNICOM 122.8 (CTAF) 0
---------------------------	-------------------------------------------	-----------------------	---------------------------------



1700	CIGOM	JEGIL	Visual Segment - Obstacles.	FOLEN
↑	☼	342° tr ☼		
			CEMIS	1800
				1500
				012°
				355°
				4.4 NM
				6 NM
CATEGORY	A	B	C	D
LNAV MDA	660-1	618 (700-1)	660-1¾ 618 (700-1¾)	NA



SC-4, 26 DEC 2024 to 23 JAN 2025

SC-4, 26 DEC 2024 to 23 JAN 2025