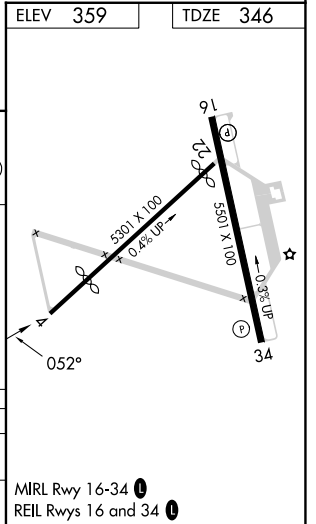
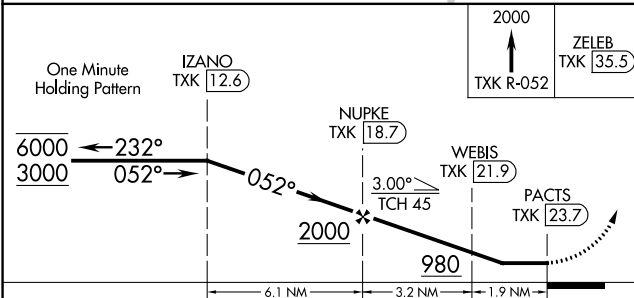
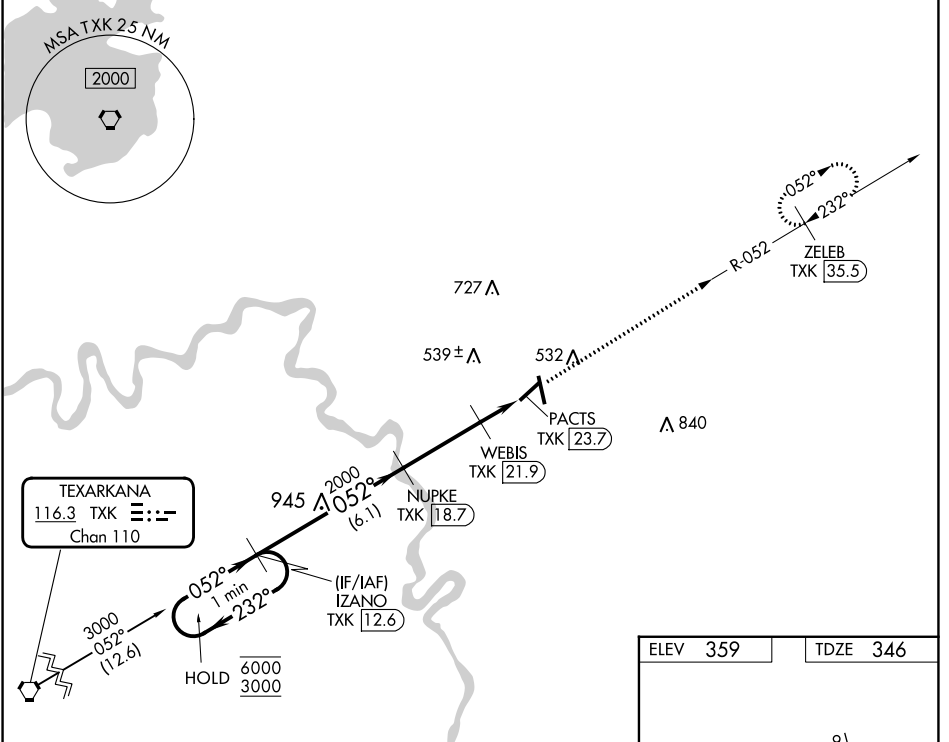


VORTAC TXK 116.3 Chan 110	APP CRS 052°	Rwy Idg TDZE 4111 346	Apt Elev 359
---	------------------------	---	------------------------

VOR RWY 4

HOPE MUNI (M18)

DME required.		MISSED APPROACH: Climb to 2000 on TXK VORTAC R-052 to ZELEB/TXK 35.5 DME and hold.	
<p>Procedure NA at night. Rwy 4 helicopter visibility reduction below 1 SM NA. Use Texarkana altimeter setting.</p>			
TXK ASOS 120.2	FORT WORTH CENTER 123.925 269.475	UNICOM 122.8 (CTAF) 0	



CATEGORY	A	B	C	D
S-4	860-1	514 (600-1)	860-1 $\frac{3}{8}$	514 (600-1 $\frac{3}{8}$)
CIRCLING	860-1 501 (600-1)	940-1 581 (600-1)	940-1 $\frac{1}{2}$ 581 (600-1 $\frac{1}{2}$)	1100-2 $\frac{1}{2}$ 741 (800-2 $\frac{1}{2}$)

SC-1, 26 DEC 2024 to 23 JAN 2025

SC-1, 26 DEC 2024 to 23 JAN 2025