

WAAS CH 82422 W34A	APP CRS 341°	Rwy Idg TDZE 1296 Apt Elev 1300
--	------------------------	---

RNAV (GPS) RWY 34

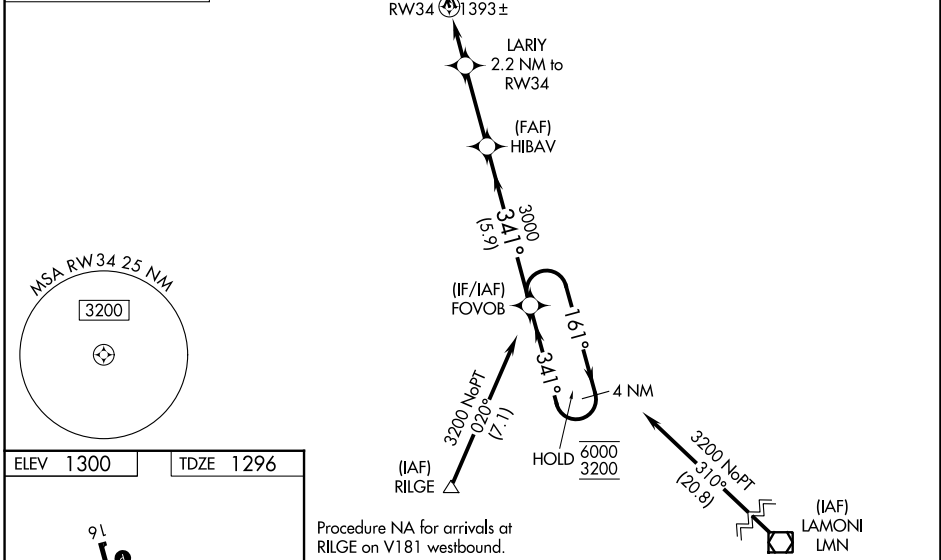
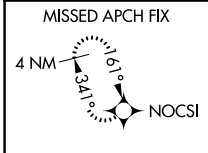
CRESTON MUNI (CSQ)

RNP APCH - GPS.

⚠ Rwy 34 helicopter visibility reduction below 1 SM NA. Circling NA for Cats B and C west of Rwy 16-34. Circling NA to Rwy 4-22. When local altimeter setting not received, use DSM altimeter setting and increase all MDAs 160 feet and LNAV visibility Cat C 1/2 SM, and LP visibility Cat C 1/2 SM, and Circling visibility Cat C 1/2 SM.

MISSED APPROACH: Climb to 3000 direct NOCSI and hold.

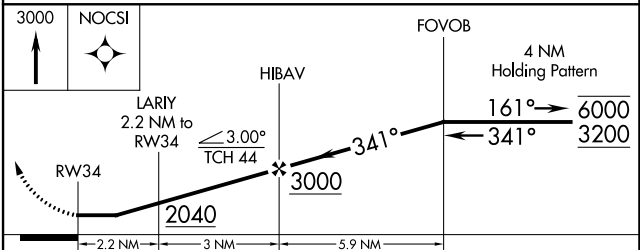
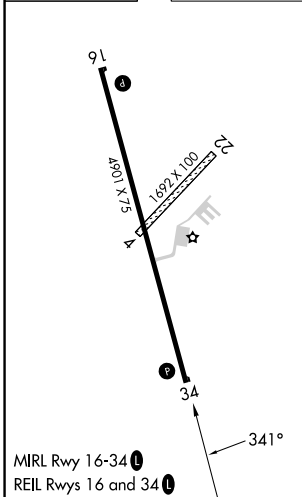
AWOS-3 124.75	MINNEAPOLIS CENTER 125.65 306.95	UNICOM 122.8 (CTAF) 0
-------------------------	--	---------------------------------



NC-3, 26 DEC 2024 to 23 JAN 2025

NC-3, 26 DEC 2024 to 23 JAN 2025

ELEV 1300	TDZE 1296
-----------	-----------



CATEGORY	A	B	C	D
LP MDA	1660-1	364 (400-1)		NA
LNAV MDA	1660-1	364 (400-1)		NA
CIRCLING	1720-1 420 (500-1)	1820-1 520 (600-1)	1940-1¾ 640 (700-1¾)	NA