

WESTMINSTER, MARYLAND

AL-5533 (FAA)

23222

WAAS CH <b>82117</b> <b>W34A</b>	APP CRS <b>339°</b>	Rwy Idg <b>5100</b> TDZE <b>788</b> Apt Elev <b>789</b>
--	------------------------	---

# RNAV (GPS) RWY 34

CARROLL COUNTY RGNL/JACK B POAGE FLD (DMW)

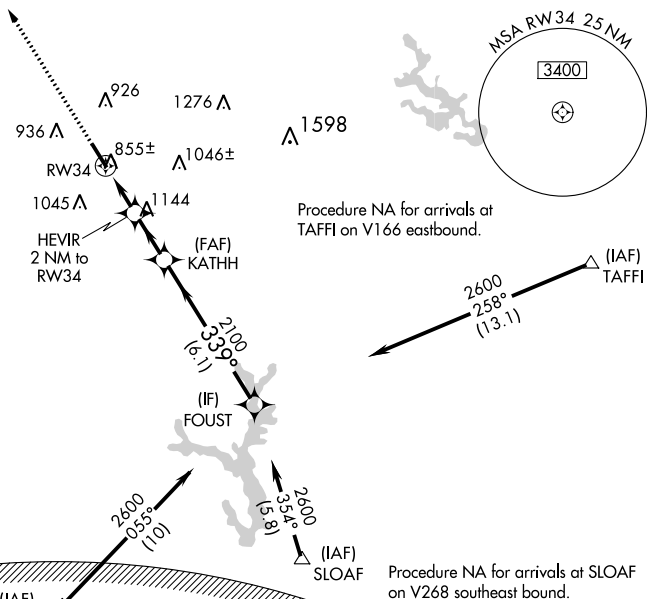
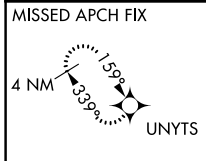
RNP APCH

**▽** For uncompensated Baro-VNAV systems, LNAV/VNAV NA below -16°C (4°F) or above 54°C (130°F).

**▲**

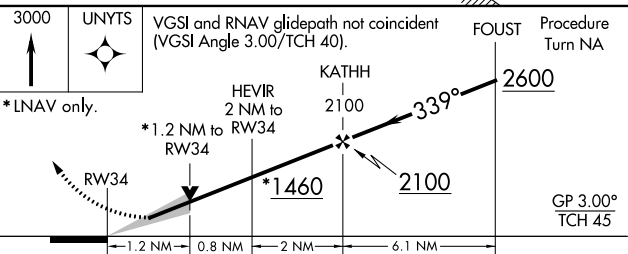
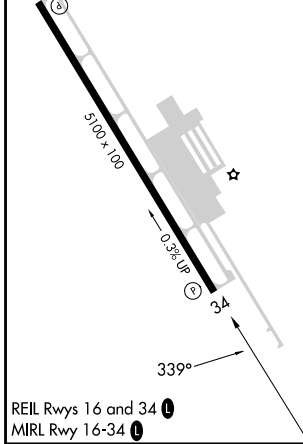
MISSED APPROACH: Climb to 3000 direct UNYTS and hold

AWOS-3 <b>121.25</b>	POTOMAC APP CON <b>125.525 291.625</b>	GCO <b>121.725</b>	UNICOM <b>122.7 (CTAF) 0</b>
-------------------------	---	-----------------------	---------------------------------



ELEV <b>789</b>	TDZE <b>788</b>
-----------------	-----------------

WASHINGTON DC METROPOLITAN SFRA  
**WARNING -- WASHINGTON DC SFRA. CTC POTOMAC APP CON**



CATEGORY	A	B	C	D
LPV DA	988-1 200 (200-1)			NA
LNAV/VNAV DA	1105-1¼ 317 (400-1¼)			NA
LNAV MDA	1180-1 392 (400-1)			NA
CIRCLING	1320-1 531 (600-1)	1400-1 611 (700-1)	1500-2 711 (800-2)	NA

WESTMINSTER, MARYLAND  
Amdt 1C 20MAY21

CARROLL COUNTY RGNL/JACK B POAGE FLD (DMW)  
39°36'N-77°00'W

# RNAV (GPS) RWY 34

NE-3, 26 DEC 2024 to 23 JAN 2025

NE-3, 26 DEC 2024 to 23 JAN 2025