

WAAS CH 97439 W27A	APP CRS 273°	Rwy Idg TDZE Apt Elev	4649 879 884
--	------------------------	-----------------------------	---

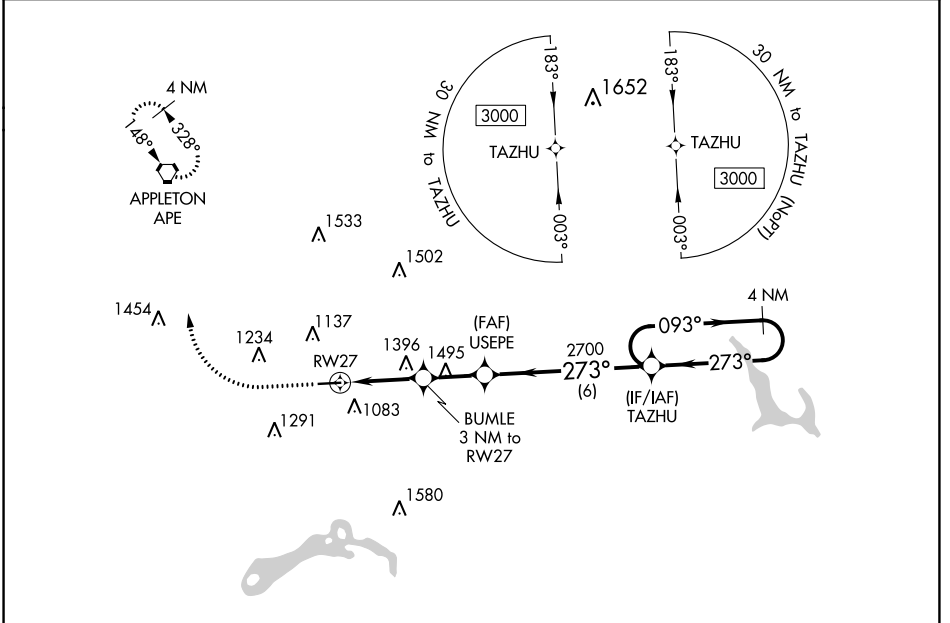
RNAV (GPS) RWY 27

LICKING COUNTY RGNL (VTA)

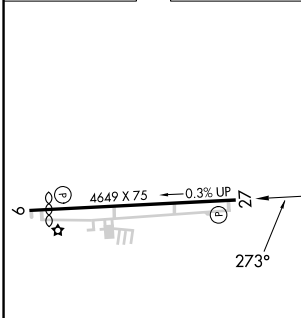
⚠ Circling Rwy 9 NA at night. Rwy 27 helicopter visibility reduction below ¼ SM NA. DME/DME RNP-0.3 NA.

MISSED APPROACH: Climb to 2000 then climbing right turn to 3000 direct APE VORTAC and hold.

ASOS 121.125	COLUMBUS APP CON 125.95 317.775	CLNC DEL 125.175	UNICOM 122.7 (CTAF)	123.3 Ⓛ
------------------------	---	----------------------------	-------------------------------	-----------------------



ELEV 884	TDZE 879
-----------------	-----------------



2000	3000	APE	VGSI and descent angles not coincident (VGSI Angle 3.25/TCH 36).	4 NM Holding Pattern
BUMLE 3 NM to RW27		USEPE	TAZHU	3000
2.3 NM to RW27		3.25° TCH 35	2700	093° → 273° ←
2.3 NM		0.7 NM	2.2 NM	6 NM
CATEGORY	A	B	C	D
LP MDA	1680-1 801 (800-1)	1680-1¼ 801 (800-1¼)	1680-2½ 801 (800-2½)	801 (800-2½)
LNAV MDA	1700-1 821 (900-1)	1700-1¼ 821 (900-1¼)	1700-2½	821 (900-2½)
C CIRCLING	1700-1¼	816 (900-1¼)	1760-2½ 876 (900-2½)	1760-2¾ 876 (900-2¾)

MIRL Rwy 9-27 **Ⓛ**
REIL Rwy 9 and 27 **Ⓛ**

EC-2, 26 DEC 2024 to 23 JAN 2025

EC-2, 26 DEC 2024 to 23 JAN 2025