

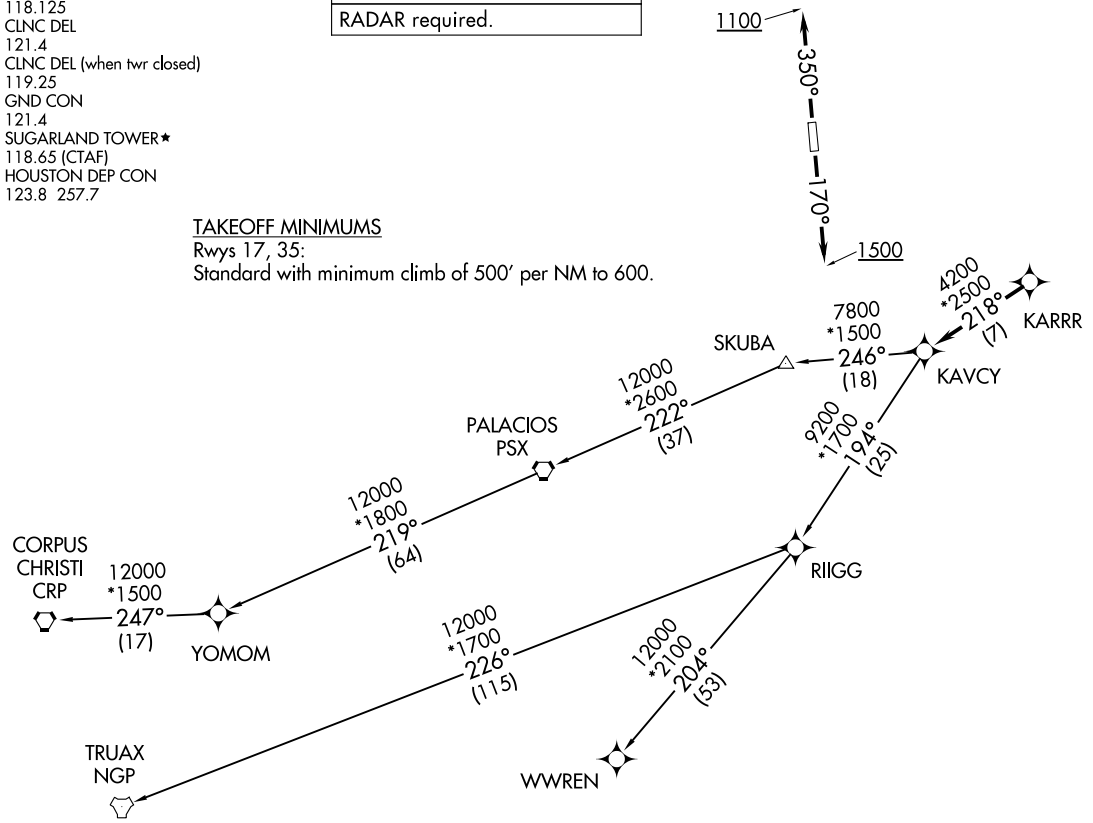
KARRR SEVEN DEPARTURE (RNAV)
(KARRR7 .KARRR) 29DEC22

ATIS★
 118.125
 CLNC DEL
 121.4
 CLNC DEL (when twr closed)
 119.25
 GND CON
 121.4
 SUGARLAND TOWER★
 118.65 (CTAF)
 HOUSTON DEP CON
 123.8 257.7

TAKEOFF MINIMUMS
 Rwy 17, 35:
 Standard with minimum climb of 500' per NM to 600.

RNAV-1 DME/DME/IRU or GPS. RADAR required.

**TOP ALTITUDE:
ASSIGNED BY ATC**



(KARRR7 .KARRR) 22363
 AL-5537 (FAA)
 SUGAR LAND RGNL (SGR)
 HOUSTON, TEXAS

(NARRATIVE ON FOLLOWING PAGE)

NOTE: Chart not to scale.

KARRR SEVEN DEPARTURE (RNAV)



DEPARTURE ROUTE DESCRIPTION

TAKEOFF RUNWAY 17: Climb on heading 170° to 1500, for RADAR vectors to KARRR, thence. . . .

TAKEOFF RUNWAY 35: Climb on heading 350° to 1100, for RADAR vectors to KARRR, thence. . . .

. . . .on track 218° to KAVCY, then on (transition). Maintain ATC assigned altitude. Expect filed altitude 10 minutes after departure.

CORPUS CHRISTI TRANSITION (KARRR7.CRP)

PALACIOS TRANSITION (KARRR7.PSX)

TRUAX TRANSITION (KARRR7.NGP)

WWREN TRANSITION (KARRR7.WWREN)

YOMOM TRANSITION (KARRR7.YOMOM)

SC-5, 26 DEC 2024 to 23 JAN 2025

SC-5, 26 DEC 2024 to 23 JAN 2025