

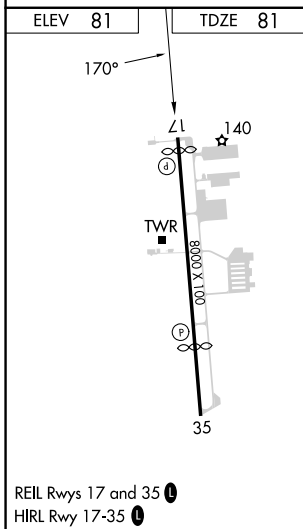
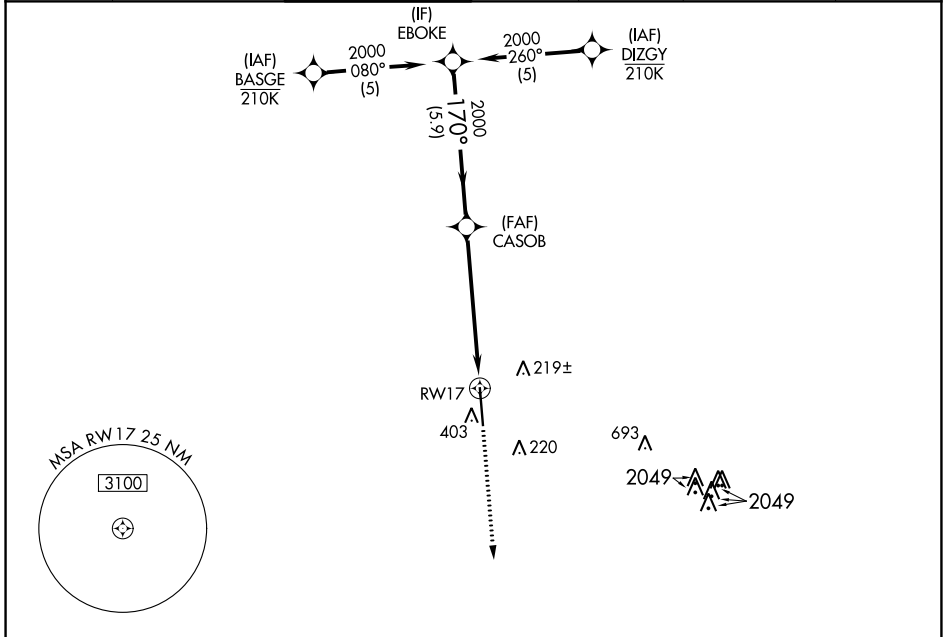
WAAS CH <b>82513</b> <b>W17A</b>	APP CRS <b>170°</b>	Rwy Idg TDZE Apt Elev	<b>7620</b> <b>81</b> <b>81</b>
--	------------------------	-----------------------------	---------------------------------------

# RNAV (GPS) RWY 17

SUGAR LAND RGNL (SGR)

RNP APCH - GPS.	MISSED APPROACH: Climb to 2000 direct POPAM and hold.
<p>⚠ For uncompensated Baro-VNAV systems, LNAV/VNAV NA below -4°C or above 54°C. Rwy 17 helicopter visibility reduction below ¼ SM NA.</p>	

ATIS★ <b>118.125</b>	HOUSTON APP CON <b>123.8 257.7</b>	SUGAR LAND TOWER★ <b>118.65 (CTAF)</b>	GND CON <b>121.4</b>	CLNC DEL <b>121.4</b>	CLNC DEL <b>119.25</b> (when twr closed)	UNICOM <b>122.95</b>
-------------------------	---------------------------------------	---	-------------------------	--------------------------	--	-------------------------



ELEV 81	TDZE 81
<p>VGSI and RNAV glidepath not coincident (VGSI Angle 3.50/TCH 52).</p>	
<p>GP 3.00° TCH 54</p>	
<p>2000 → 170° → 2000 → 1.4 NM to RWY 17 → RWY 17</p>	
<p>5.9 NM      4.5 NM      1.4 NM</p>	
CATEGORY	A      B      C      D
LPV DA	398-1    317 (400-1)
LNAV/VNAV DA	704-2    623 (700-2)
LNAV MDA	640-1    559 (600-1)      640-1½    559 (600-1½)
CIRCLING	720-1    639 (700-1)      720-1¾    720-2 639 (700-1¾)    639 (700-2)

SC-5, 26 DEC 2024 to 23 JAN 2025

SC-5, 26 DEC 2024 to 23 JAN 2025