

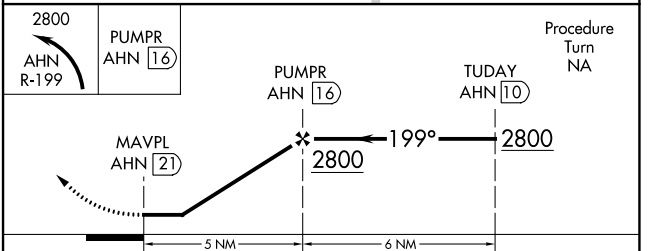
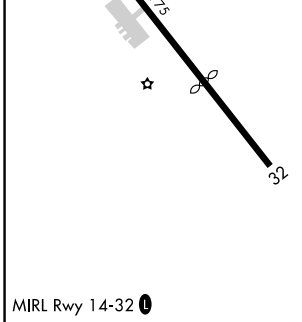
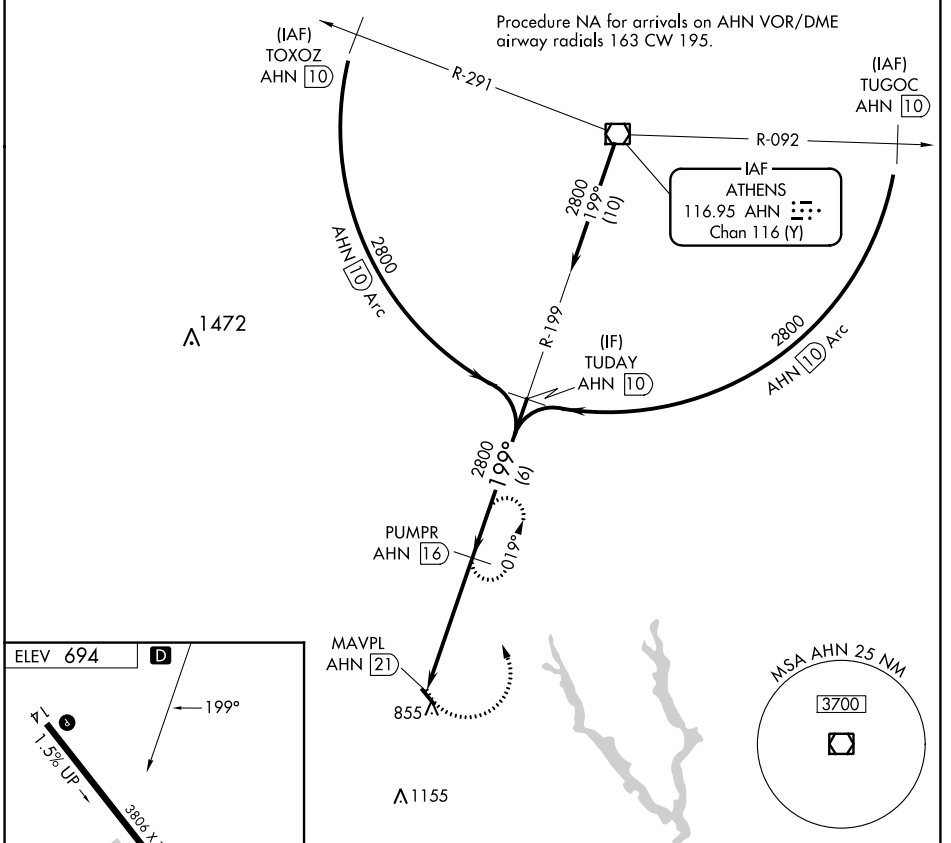
VOR/DME AHN <b>116.95</b> Chan <b>116</b> (Y)	APP CRS <b>199°</b>	Rwy Idg TDZE Apt Elev <b>N/A</b> <b>694</b>
---	------------------------	--

# VOR/DME-A

MADISON MUNI (52A)

<p>▼ Procedure NA at night. ▲ NA Use Athens altimeter setting. Visibility reduction by helicopters NA.</p>	<p>MISSED APPROACH: Climbing left turn to 2800 on AHN VOR/DME R-199 to PUMPR/AHN 16 DME and hold.</p>
--	---

AHN ASOS <b>132.875</b>	ATLANTA APP CON ★ <b>132.475 291.1</b>	UNICOM <b>122.8</b> (CTAF) 0
----------------------------	---	---------------------------------



CATEGORY	A	B	C	D
CIRCLING	1220-1 526 (600-1)	1220-1¼ 526 (600-1¼)	1380-2 686 (700-2)	NA

SE-4, 26 DEC 2024 to 23 JAN 2025

SE-4, 26 DEC 2024 to 23 JAN 2025