

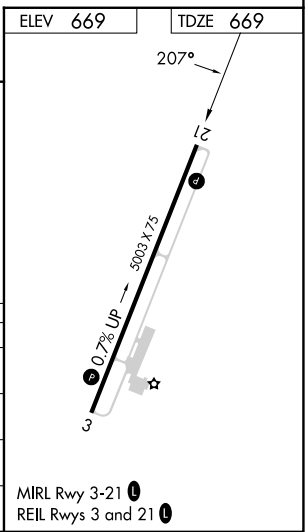
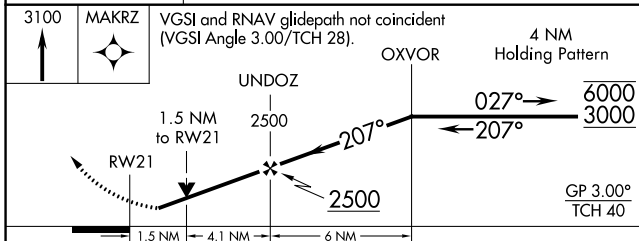
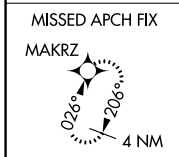
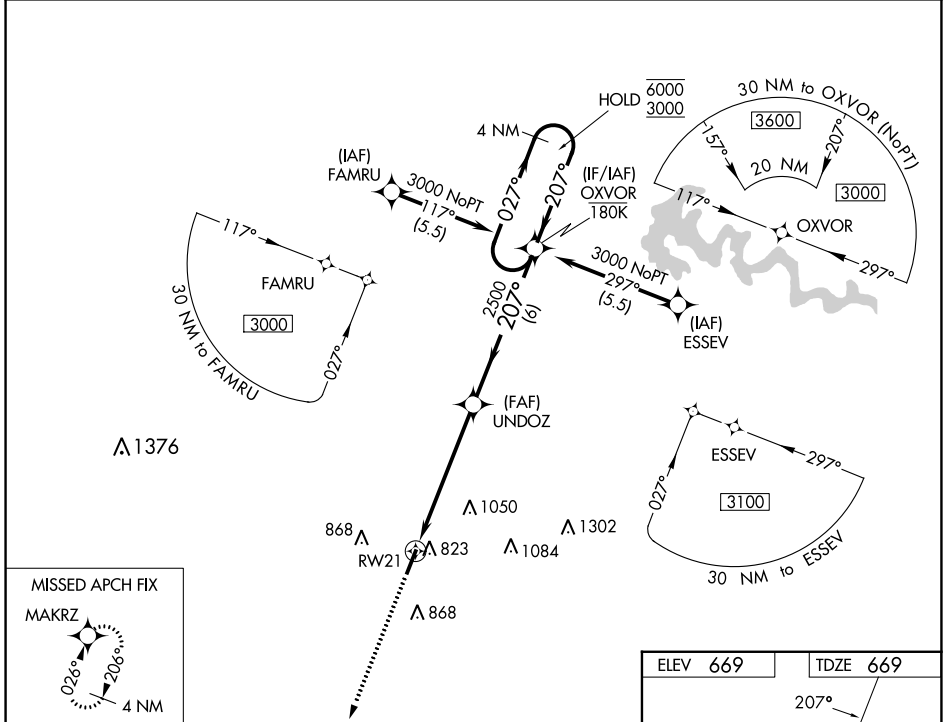
WAAS CH <b>77816</b> <b>W21A</b>	APP CRS <b>207°</b>	Rwy Idg TDZE Apt Elev	<b>5003</b> <b>669</b> <b>669</b>
--	------------------------	-----------------------------	---

# RNAV (GPS) RWY 21

SAMUELS FLD (BRY)

RNP APCH - GPS.	MISSED APPROACH: Climb to 3100 direct MAKRZ and hold.
<p><b>▼</b> Rwy 21 helicopter visibility reduction below 3/4 SM NA. <b>▲</b> For uncompensated Baro-VNAV systems, LNAV/VNAV NA below -16°C or above 54°C.</p>	

AWOS-3 <b>119.925</b>	LOUISVILLE APP CON <b>132.075 327.0</b>	UNICOM <b>122.8 (CTAF) 0</b>
--------------------------	--	---------------------------------



CATEGORY	A	B	C	D
LPV DA	919-3/4		250 (300-3/4)	
LNAV/VNAV DA	1051-1 1/8		382 (400-1 1/8)	
LNAV MDA	1180-1	511 (600-1)	1180-1 3/8	511 (600-1 1/8)
<b>C</b> CIRCLING	1200-1 531 (600-1)	1280-1 611 (700-1)	1360-2 691 (700-2)	1480-2 3/4 811 (900-2 3/4)

SE-1, 26 DEC 2024 to 23 JAN 2025

SE-1, 26 DEC 2024 to 23 JAN 2025