

WAAS CH <b>90441</b> <b>W32A</b>	APP CRS <b>316°</b>	Rwy Idg TDZE Apt Elev	<b>3650</b> <b>1245</b> <b>1245</b>
--	------------------------	-----------------------------	---

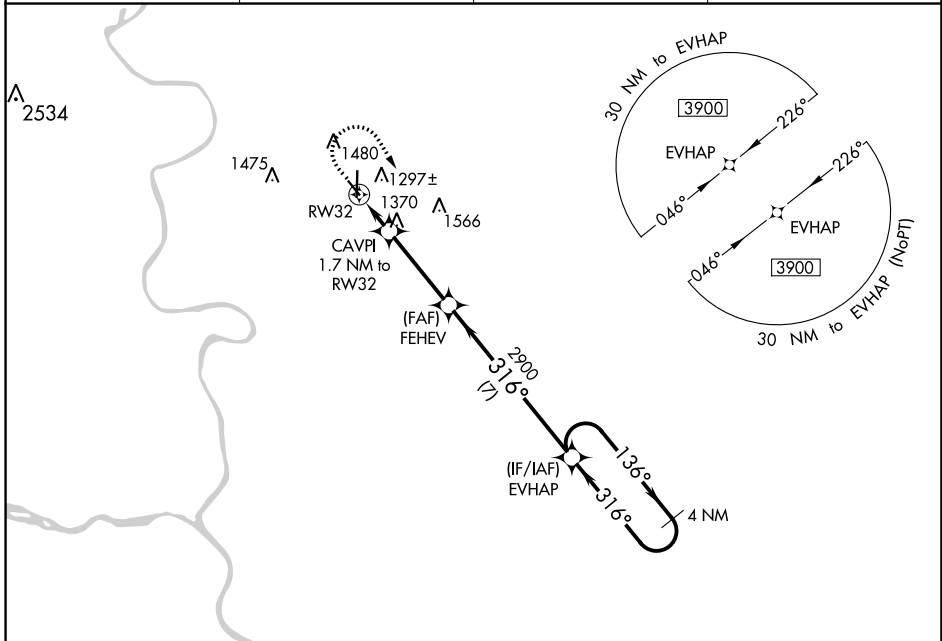
# RNAV (GPS) RWY 32

COUNCIL BLUFFS MUNI (CBF)

⚠ For uncompensated Baro-VNAV systems, LNAV/VNAV NA below -18°C (0°F) or above 54°C (130°F). DME/DME RNP- 0.3 NA.

MISSED APPROACH: Climb to 2000 then climbing right turn to 3900 direct EVHAP and hold.

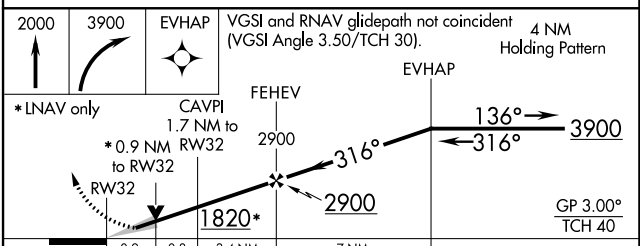
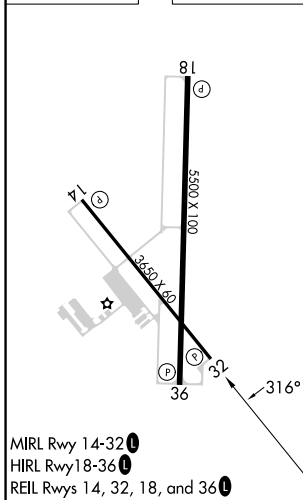
AWOS-3 <b>126.575</b>	OMAHA APP CON <b>124.5 263.0</b>	CLNC DEL <b>127.675</b>	UNICOM <b>122.725 (CTAF)</b> <b>📞</b>
--------------------------	-------------------------------------	----------------------------	--



NC-3, 26 DEC 2024 to 23 JAN 2025

NC-3, 26 DEC 2024 to 23 JAN 2025

ELEV 1245	TDZE 1245
-----------	-----------



CATEGORY	A	B	C	D
LPV DA		1445- <sup>3</sup> / <sub>4</sub>	200 (200- <sup>3</sup> / <sub>4</sub> )	
LNAV/VNAV DA		1495- <sup>3</sup> / <sub>4</sub>	250 (300- <sup>3</sup> / <sub>4</sub> )	
LNAV MDA		1620-1	375 (400-1)	
<input checked="" type="checkbox"/> CIRCLING	1780-1	535 (600-1)	1780-1½ 535 (600-1½)	1880-2 635 (700-2)