

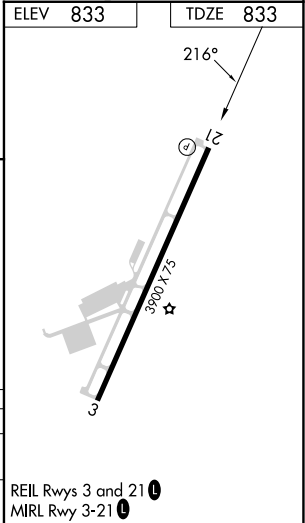
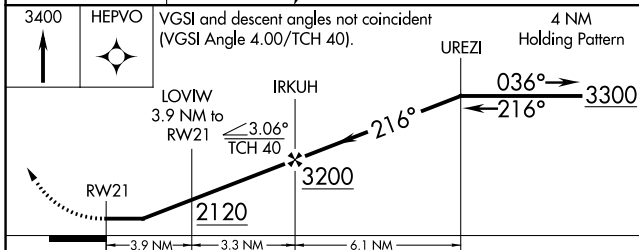
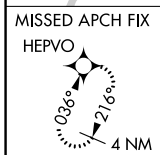
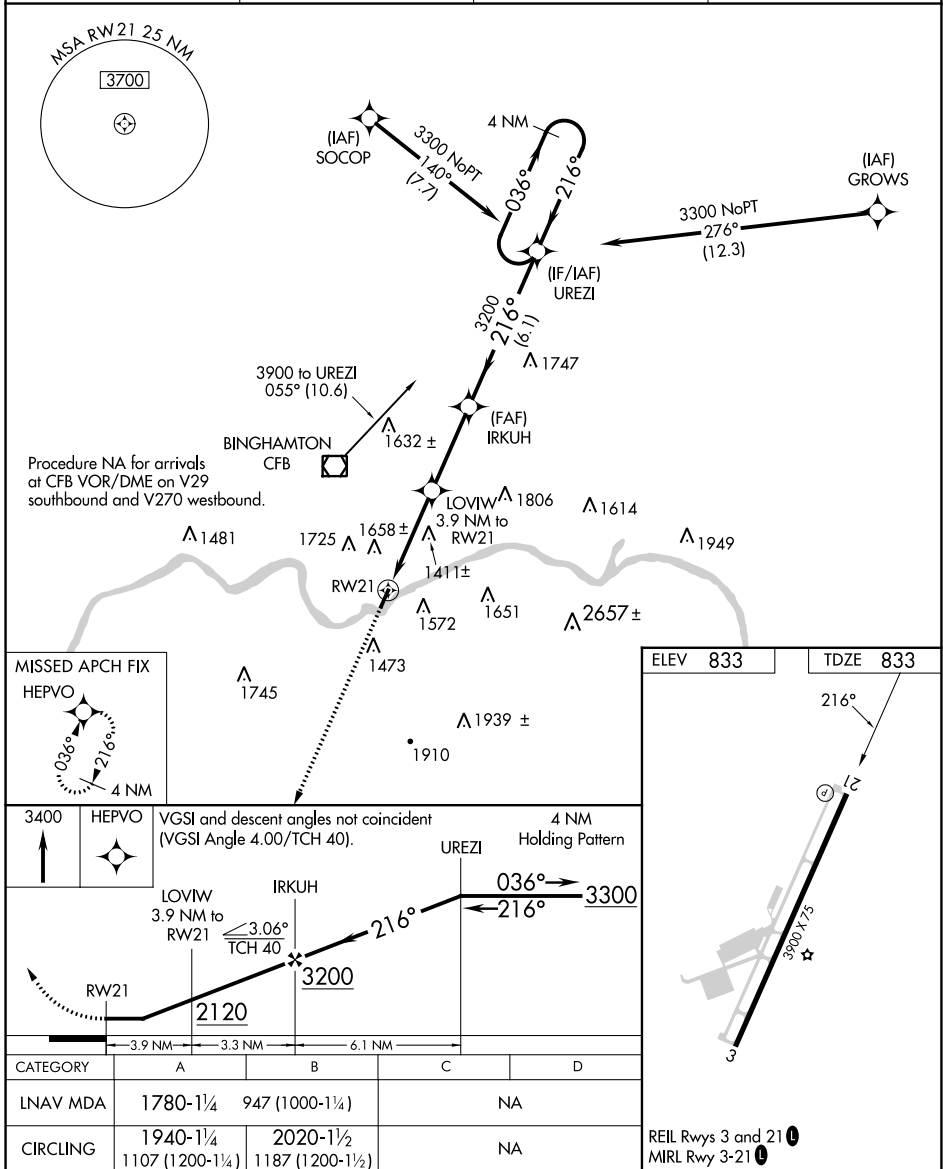
APP CRS 216°	Rwy Idg 3900
	TDZE 833
	Apt Elev 833

RNAV (GPS) RWY 21

TRI-CITIES (CZG)

▼ DME/DME RNP-0.3 NA. ▲ NA Procedure NA at night. ☒ -17°C Rwy 21 helicopter visibility reduction below 1 SM NA.	MISSED APPROACH: Climb to 3400 direct HEPVO and hold.
--	---

AWOS-3 119.075	BINGHAMTON APP CON ★ 118.6 257.625	CLNC DEL 121.7	UNICOM 122.8 (CTAF) 0
--------------------------	--	--------------------------	---------------------------------



CATEGORY	A	B	C	D
LNAV MDA	1780-1¼	947 (1000-1¼)		NA
CIRCLING	1940-1¼ 1107 (1200-1¼)	2020-1½ 1187 (1200-1½)		NA

REIL Rwys 3 and 21
MRL Rwy 3-21

NE-2, 26 DEC 2024 to 23 JAN 2025

NE-2, 26 DEC 2024 to 23 JAN 2025