

LOM RU <b>275</b>	APP CRS <b>202°</b>	Rwy Idg TDZE Apt Elev	<b>5501</b> <b>772</b> <b>772</b>
----------------------	------------------------	-----------------------------	---

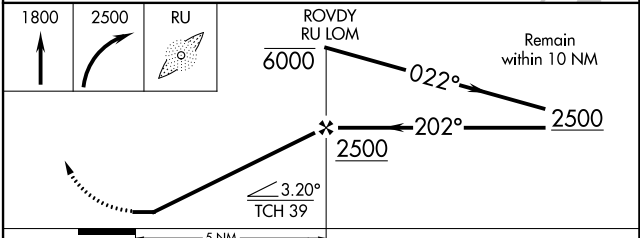
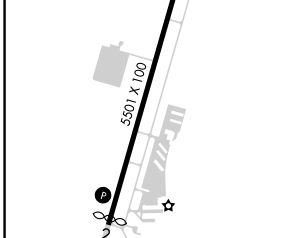
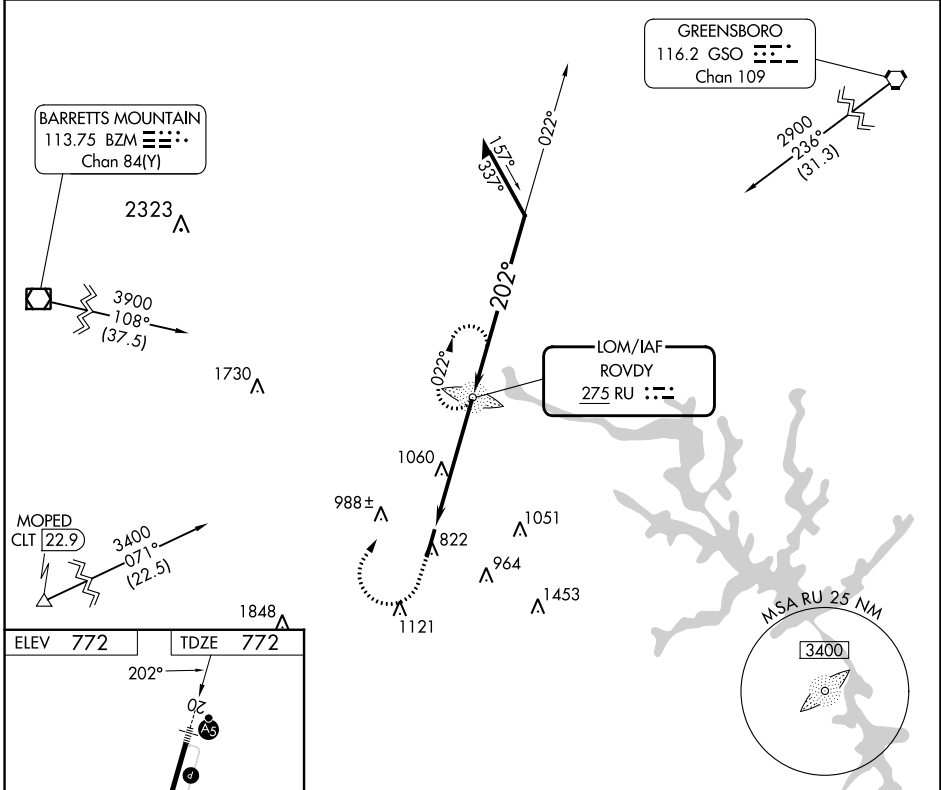
**NDB RWY 20**  
MID-CAROLINA RGNL (RUQ)

When local altimeter setting not received, use Lexington altimeter setting and increase all MDA 40 feet, increase S-20 Cats C and D, and Circling Cat C visibility 1/8 SM and Circling Cat D 1/4 SM. For inop ALS, increase Cat D visibility to 1 7/8 SM. For inop ALS when using Lexington altimeter setting increase Cat D visibility to 2 SM.



**MISSED APPROACH:**  
Climb to 1800 then climbing right turn to 2500 direct ROVDY LOM and hold.

AWOS-3 <b>118.175</b>	CHARLOTTE APP CON <b>128.325 307.8</b>	CLNC DEL <b>127.35</b>	UNICOM <b>122.725 (CTAF)</b>
--------------------------	---	---------------------------	---------------------------------



CATEGORY	A	B	C	D
S-20	1420-3/4 648 (700-3/4)		1420-1 648 (700-1)	
<input checked="" type="checkbox"/> CIRCLING	1420-1 648 (700-1)		1440-1 668 (700-1)	1440-2 668 (700-2)

SE-2, 26 DEC 2024 to 23 JAN 2025

SE-2, 26 DEC 2024 to 23 JAN 2025