

WAAS CH <b>86324</b>	APP CRS <b>007°</b>	Rwy Idg TDZE Apt Elev	<b>5001</b> <b>489</b> <b>489</b>
-------------------------	------------------------	-----------------------------	---

# RNAV (GPS) RWY 1

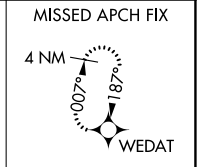
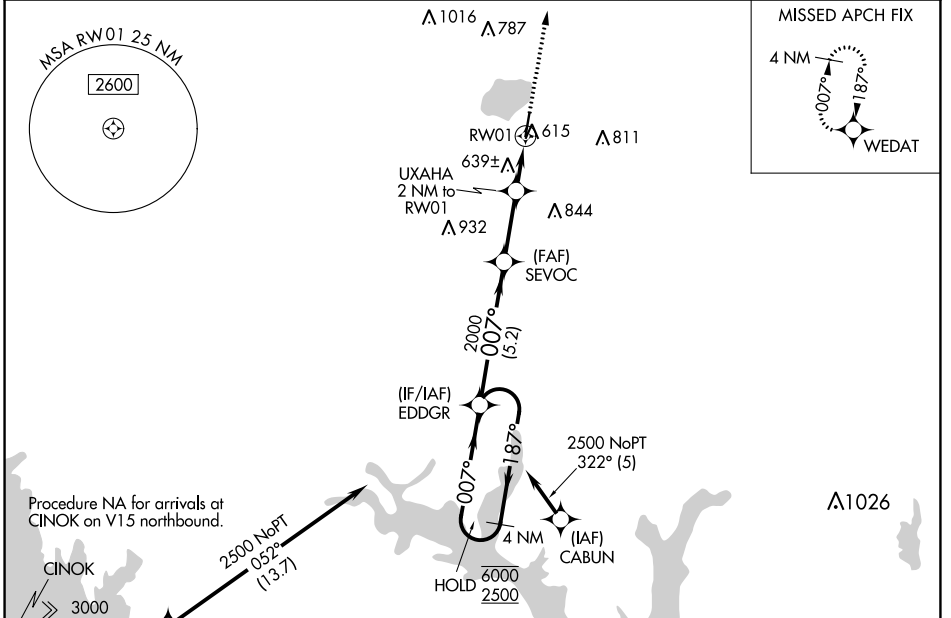
SULPHUR SPRINGS MUNI (SLR)

RNP APCH-GPS.

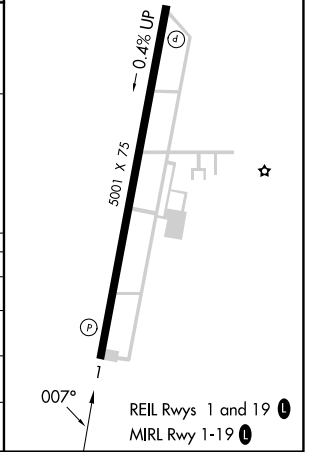
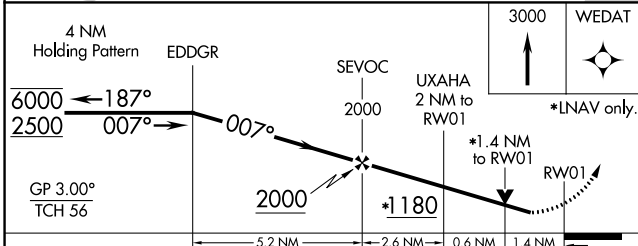
**⚠** Circling NA east of Rwy 1-19. Rwy 1 helicopter visibility reduction below 3/4 SM NA.  
**⚠** For uncompensated Baro-VNAV systems, LNAV/VNAV NA below -15°C or above 54°C.

MISSED APPROACH: Climb to 3000 direct WEDAT and hold.

AWOS-3 <b>118.35</b>	FORT WORTH CENTER <b>132.025 360.75</b>	UNICOM <b>123.075 (CTAF)</b> <b>📶</b>
-------------------------	--	--



ELEV 489	TDZE 489
----------	----------



CATEGORY	A	B	C	D
LPV DA	803-1	314 (400-1)		NA
LNAV/VNAV DA	975-1 5/8	486 (500-1 5/8)		NA
LNAV MDA	1000-1	511 (600-1)	1000-1 3/8 511 (600-1 3/8)	NA
<b>📶</b> CIRCLING	1000-1	511 (600-1)	1000-1 1/2 511 (600-1 1/2)	NA

SC-2, 26 DEC 2024 to 23 JAN 2025

SC-2, 26 DEC 2024 to 23 JAN 2025