

MILLERSBURG, OHIO

AL-5561 (FAA)

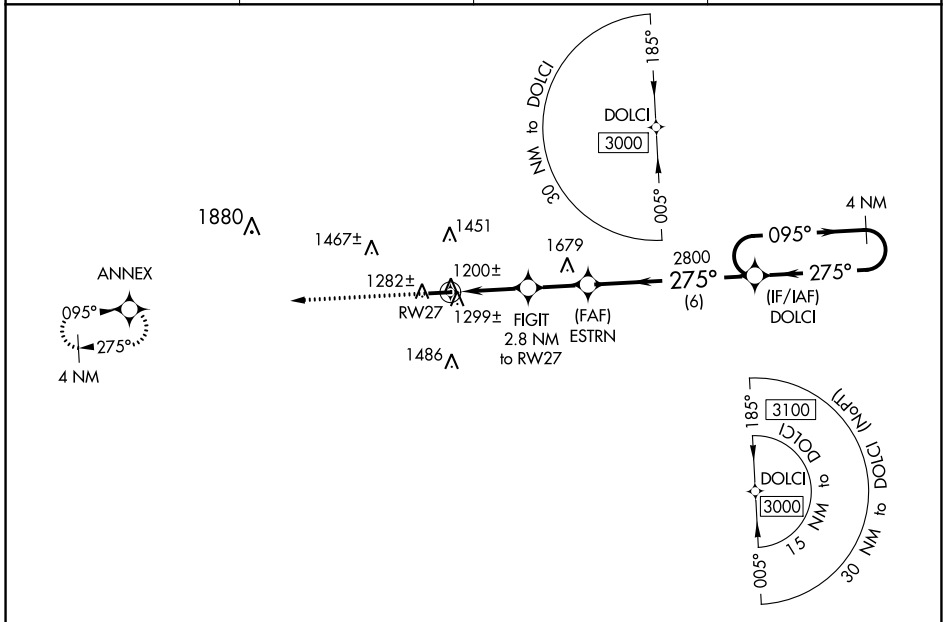
23166

WAAS CH <b>57937</b> <b>W27A</b>	APP CRS <b>275°</b>	Rwy Idg <b>4400</b> TDZE <b>1215</b> Apt Elev <b>1227</b>
--	------------------------	---

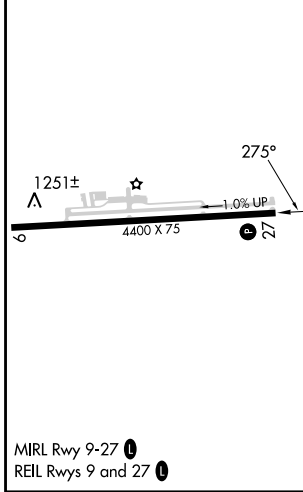
# RNAV (GPS) RWY 27

HOLMES COUNTY (10G)

RNP APCH - GPS.			MISSED APPROACH: Climb to 3000 direct ANNEX and hold.
When local altimeter setting not received, use Wayne County altimeter setting: increase all MDA 60 feet and visibility LNAV and Circling Cats C and D ¼ SM.			
AWOS-3 <b>128.325</b>	INDIANAPOLIS CENTER <b>124.45 323.275</b>	UNICOM <b>123.0 (CTAF)</b>	<b>123.4 0</b>



ELEV 1227	TDZE 1215
-----------	-----------



3000	ANNEX	VGSI and descent angles not coincident (VGSI Angle 3.00/TCH 25).		4 NM Holding Pattern
2100	FIGIT 2.8 NM to RW27	ESTRN	2800	DOLCI
0.9 NM to RW27	0.9 NM to RW27	1.9 NM	2.2 NM	6 NM
275°	275°	275°	275°	095°
3000	3000	3000	3000	3000
CATEGORY	A	B	C	D
LP MDA	1480-1 265 (300-1)			
LNAV MDA	1560-1 345 (400-1)			
CIRCLING	1760-1 533 (600-1)	1840-1¾ 613 (700-1¾)		1860-2 633 (700-2)

MILLERSBURG, OHIO  
Orig-C 29DEC22

40°32'N-81°57'W

# RNAV (GPS) RWY 27

EC-2, 26 DEC 2024 to 23 JAN 2025

EC-2, 26 DEC 2024 to 23 JAN 2025