

LOC I-GVQ 108.9	APP CRS 282°	Rwy Idg TDZE Apt Elev	5499 911 914
---------------------------	------------------------	-----------------------------	---

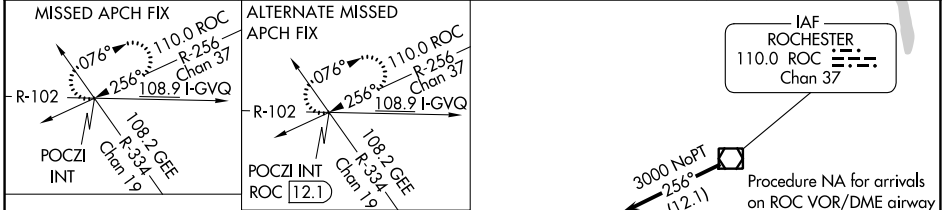
ILS or LOC RWY 28

GENESEE COUNTY (GVQ)

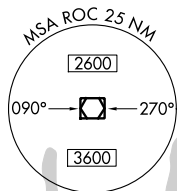
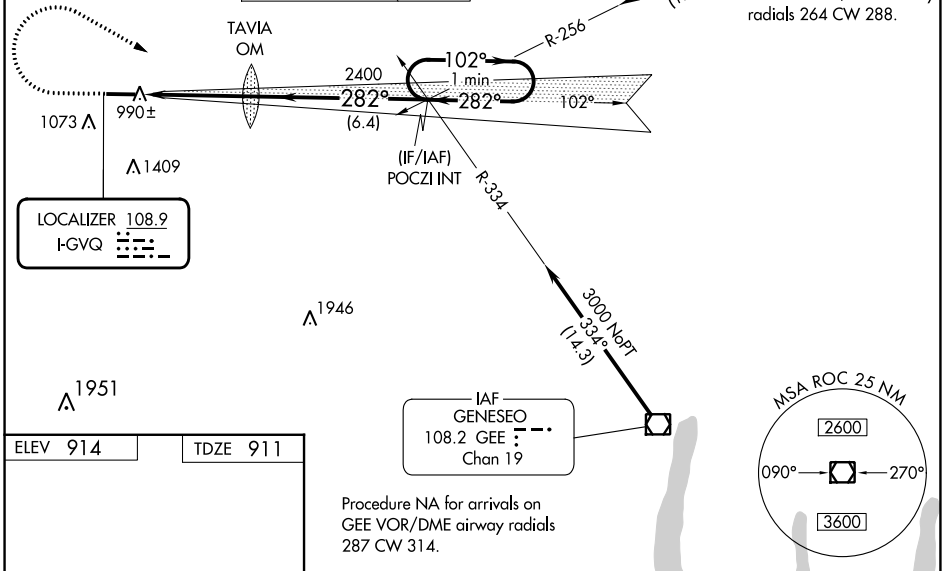
⚠ When local altimeter setting not received, use Rochester altimeter setting: increase DA to 1213 feet; increase all MDA 120 feet and visibility S-LOC 28 Cats C and D ¼ SM and Circling Cats C and D ½ SM. Autopilot coupled approach NA below 1433.

MALS MISSED APPROACH: Climb to 1500 then climbing right turn to 3000 via heading 130° and I-GVQ east course to POCZI INT and hold.

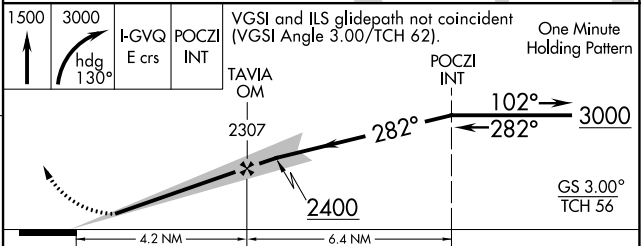
AWOS-3PT 127.525	ROCHESTER APP CON 123.7 322.3	CLNC DEL 121.8	UNICOM 122.7 (CTAF) 0
----------------------------	---	--------------------------	--



Procedure NA for arrivals on ROC VOR/DME airway radials 264 CW 288.



ELEV 914	TDZE 911
----------	----------



REIL Rwy 10 0	HIRL Rwy 10-28 0	FAF to MAP 4.2 NM			
Knots	60	90	120	150	180
Min:Sec	4:12	2:48	2:06	1:41	1:24
CATEGORY	A	B	C	D	
S-ILS 28	1111-½ 200 (200-½)				
S-LOC 28	1260-½ 349 (400-½)		1260-¾ 349 (400-¾)		
CIRCLING	1380-1 466 (500-1)		1720-2¼ 806 (900-2¼)		1720-2½ 806 (900-2½)

NE-2, 26 DEC 2024 to 23 JAN 2025

NE-2, 26 DEC 2024 to 23 JAN 2025