

WAAS CH 49130 W31A	APP CRS 315°	Rwy Idg TDZE Apt Elev	5506 1203 1204
--	------------------------	-----------------------------	---

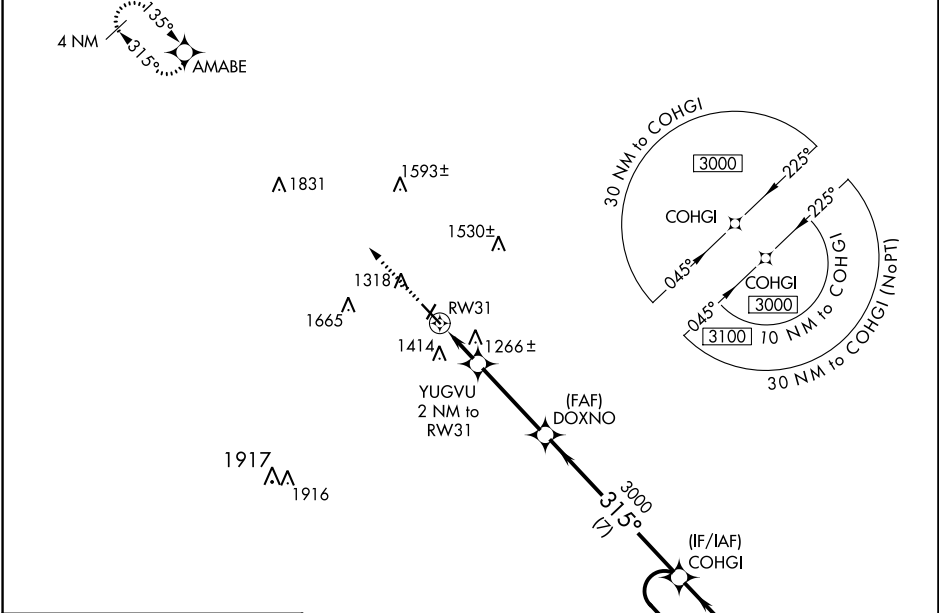
RNAV (GPS) RWY 31

ARTHUR N NEU (CIN)

⚠ For uncompensated Baro-VNAV systems, LNAV/VNAV NA below -17°C (2°F) or above 54°C (130°F). DME/DME RNP-0.3 NA. Baro-VNAV and VDP NA when using Audubon altimeter setting. When local altimeter setting not received, use Audubon altimeter setting: increase LPV DA to 1515 feet; increase LNAV/VNAV DA to 1515 feet and increase all MDAs 80 feet and visibility Cat C ¼ SM.

MISSED APPROACH: Climb to 3000 direct AMABE and hold.

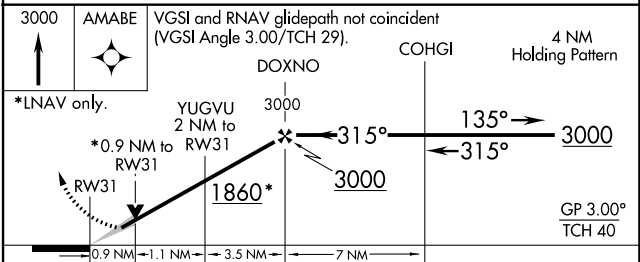
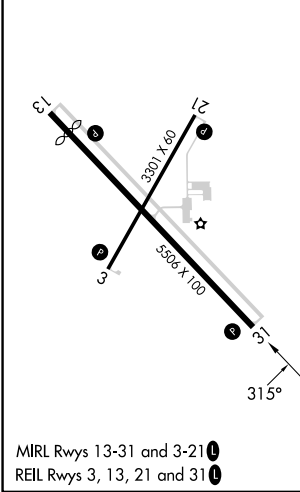
AWOS-3 118.025	MINNEAPOLIS CENTER 134.0 288.3	UNICOM 122.8 (CTAF) 0
--------------------------	--	---------------------------------



NC-3, 26 DEC 2024 to 23 JAN 2025

NC-3, 26 DEC 2024 to 23 JAN 2025

ELEV 1204	TDZE 1203
-----------	-----------



CATEGORY	A	B	C	D
LPV DA	1453-1	250 (300-1)		NA
LNAV/VNAV DA	1453-1	250 (300-1)		NA
LNAV MDA	1520-1	317 (400-1)		NA
CIRCLING	1740-1	536 (600-1)	1980-2¼ 776 (800-2¼)	NA