

WAAS CH 56336 W12A	APP CRS 126°	Rwy ldg TDZE Apt Elev	4000 541 547
--	------------------------	-----------------------------	---

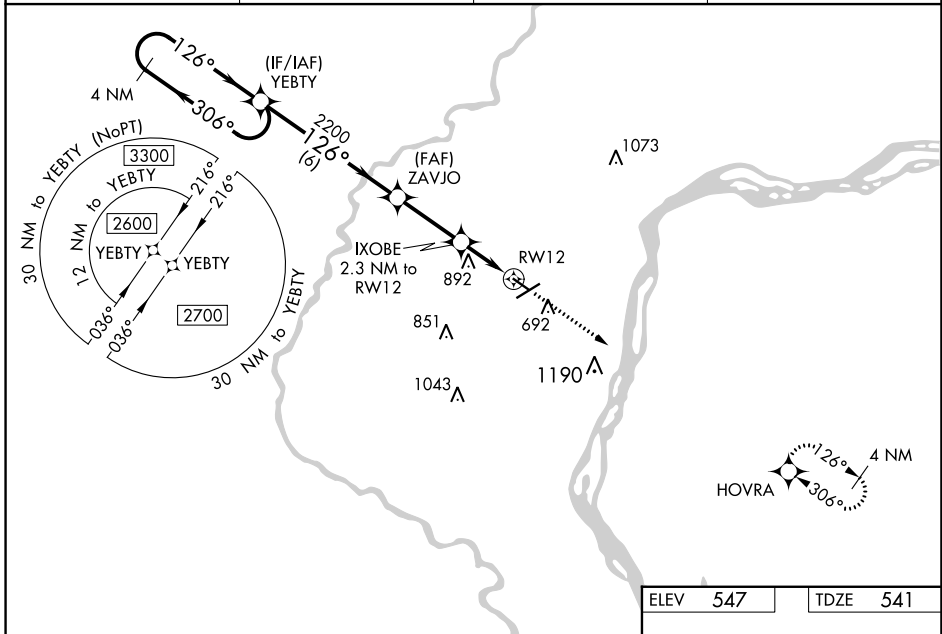
RNAV (GPS) RWY 12

MUSCATINE MUNI (MUT)

⚠ DME/DME RNP-0.3 NA. Helicopter visibility reduction below 1 SM NA. VDP and Baro-VNAV NA with Iowa City altimeter setting. When local altimeter setting not received, use Iowa City altimeter setting and increase all DA 76 feet and all MDA 80 feet, increase LPV, LNAV/VNAV all Cats visibility ½ mile. For uncompensated Baro-VNAV systems, LNAV/VNAV NA below -16°C (4°F) or above 54°C (130°F).

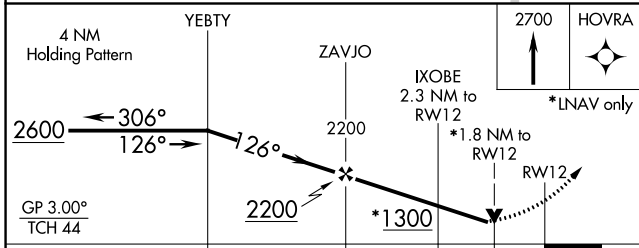
MISSED APPROACH: Climb to 2700 direct HOVRA and hold.

AWOS-3P 120.625	QUAD CITY APP CON * 133.275 257.8	CINC DEL 119.125	UNICOM 122.7 (CTAF)
---------------------------	---	----------------------------	-------------------------------

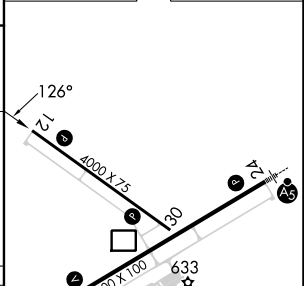


NC-3, 26 DEC 2024 to 23 JAN 2025

NC-3, 26 DEC 2024 to 23 JAN 2025



ELEV 547	TDZE 541
----------	----------



CATEGORY	A	B	C	D
LPV DA	1207-2½	666 (700-2½)		NA
LNAV/VNAV DA	1223-2½	682 (700-2½)		NA
LNAV MDA	1140-1	599 (600-1)		NA
CIRCLING	1140-1 593 (600-1)	1200-1 653 (700-1)		NA

REIL Rwy 6, 12, and 30
MIRL Rwy 6-24 and 12-30