

WAAS CH 99701 W24A	APP CRS 240°	Rwy Idg 5500 TDZE 545 Apt Elev 547
--	------------------------	---

RNAV (GPS) RWY 24

MUSCATINE MUNI (MUT)

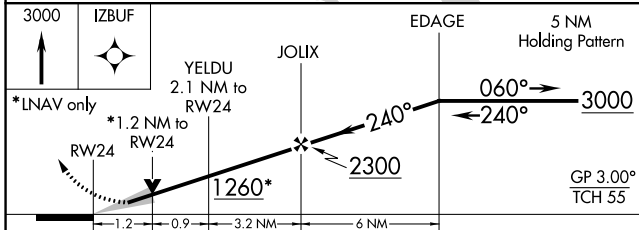
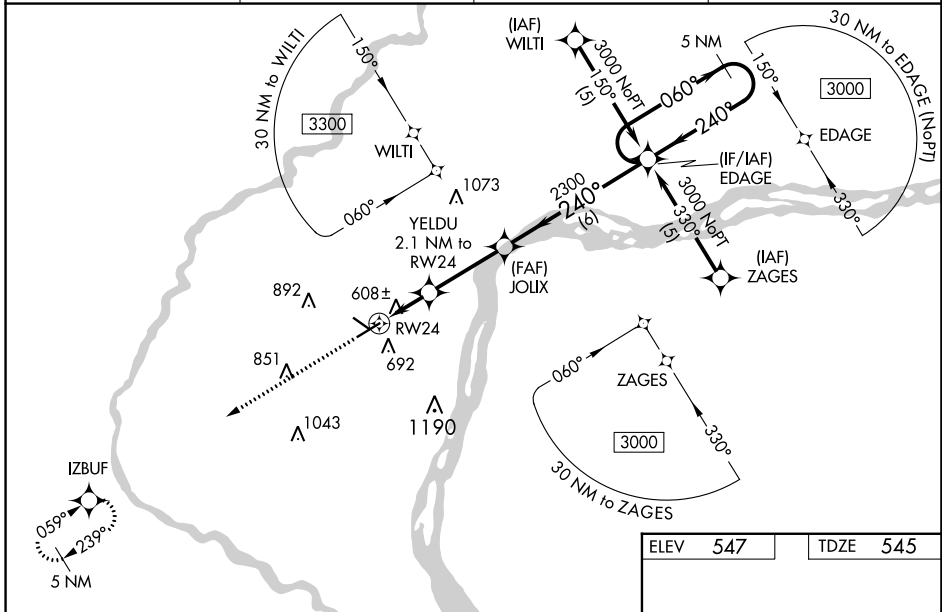
RNP APCH

▼ For uncompensated Baro-VNAV systems, LNAV/VNAV NA below -16°C (4°F) or above 48°C (118°F). For inop ALS, increase LPV all visibilities to 1 SM, increase LNAV/VNAV all Cats and LNAV Cats C visibility to 1 1/4 SM, and increase LNAV Cat D visibility to 1 1/4 SM. When local altimeter setting not received, use Iowa City altimeter setting and increase LPV DA to 992 and all visibilities 1/4 SM; increase LNAV/VNAV DA to 1030 feet and all visibilities 1/4 SM; increase all MDA 80 feet and LNAV Cats C and D visibility 1/4 SM and Circling Cat C visibility 1/4 SM. For inop ALS when using Iowa City altimeter setting, increase LPV all visibilities to 1 SM, LNAV/VNAV all visibilities to 1 1/4 SM, LNAV Cats A and B visibility to 1 SM, and LNAV Cats C and D visibility to 1 1/4 SM. Baro-VNAV and VDP NA when using Iowa City altimeter setting.

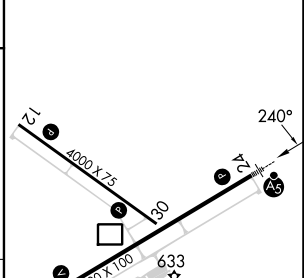
MALSR

MISSED APPROACH:
Climb to 3000 direct IZBUF and hold.

AWOS-3P 120.625	QUAD CITY APP CON * 133.275 257.8	CLNC DEL 119.125	UNICOM 122.7 (CTAF)
---------------------------	---	----------------------------	-------------------------------



ELEV 547	TDZE 545
-----------------	-----------------



CATEGORY	A	B	C	D
LPV DA		812-1/2	267 (300-1/2)	
LNAV/VNAV DA		950-3/4	405 (500-3/4)	
LNAV MDA	960-1/2	415 (500-1/2)	960-3/4 415 (500-3/4)	960-1 415 (500-1)
C CIRCLING	1080-1 1/4 533 (600-1 1/4)	1200-1 1/4 653 (700-1 1/4)	1200-1 3/4 653 (700-1 3/4)	1500-3 953 (1000-3)

REIL Rws 6, 12, and 30 **Ⓛ**
MIRL Rws 6-24 and 12-30 **Ⓛ**

NC-3, 26 DEC 2024 to 23 JAN 2025

NC-3, 26 DEC 2024 to 23 JAN 2025