

WAAS CH <b>53701</b> <b>W06A</b>	APP CRS <b>059°</b>	Rwy Idg TDZE Apt Elev	<b>5500</b> <b>547</b> <b>547</b>
--	------------------------	-----------------------------	---

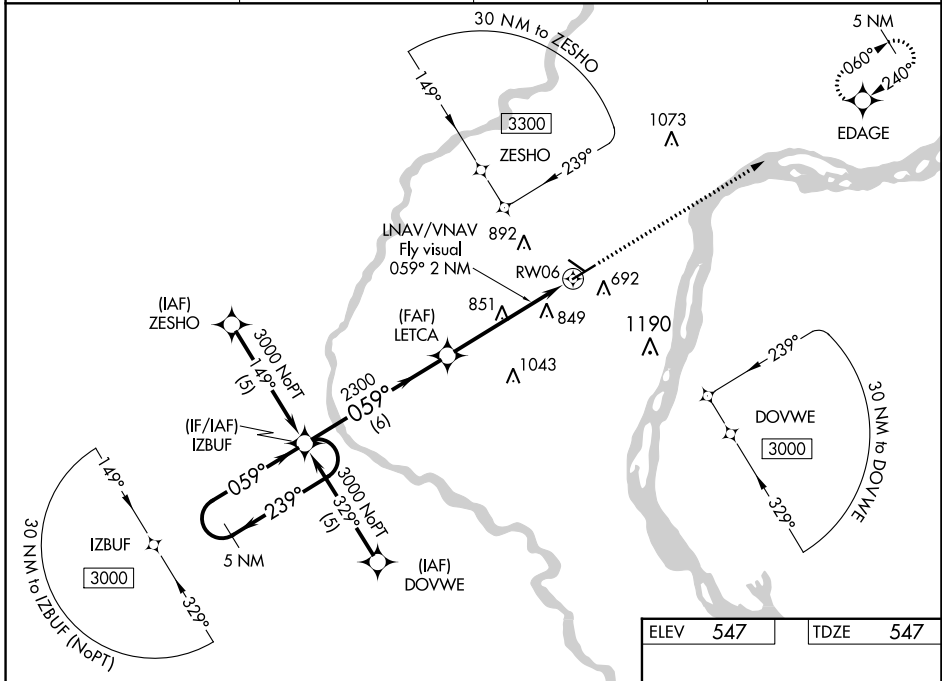
# RNAV (GPS) RWY 6

MUSCATINE MUNI (MUT)

**⚠** DME/DME RNP-0.3 NA. Visibility reductions by helicopters NA. For uncompensated Baro-VNAV systems, LNAV/VNAV NA below -16°C (4°F) or above 48°C (118°F). If local altimeter setting not received, use Iowa City Muni altimeter setting and increase all DAs/MDAs 80 feet. Baro-VNAV and VDP NA when using Iowa City Muni altimeter setting.

MISSED APPROACH: Climb to 3000 direct EDAGE and hold.

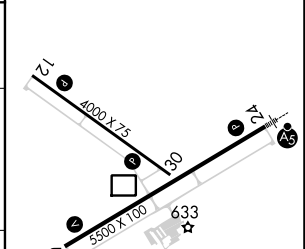
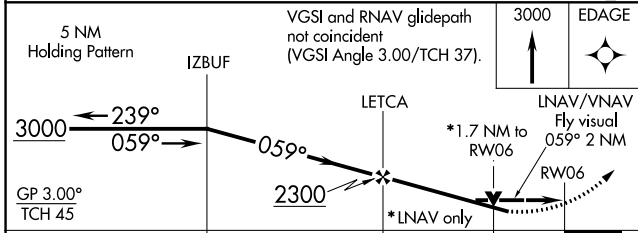
AWOS-3P <b>120.625</b>	QUAD CITY APP CON * <b>133.275 257.8</b>	CLNC DEL <b>119.125</b>	UNICOM <b>122.7 (CTAF) 0</b>
---------------------------	---	----------------------------	---------------------------------



NC-3, 26 DEC 2024 to 23 JAN 2025

NC-3, 26 DEC 2024 to 23 JAN 2025

ELEV 547	TDZE 547
----------	----------



CATEGORY	A	B	C	D
LPV DA	1076-2 529 (600-2)			
LNAV/VNAV DA	1232-2 685 (700-2)		1232-2¼ 685 (700-2¼)	
LNAV MDA	1120-1 573 (600-1)	1120-1½ 573 (600-1½)		1120-1¾ 573 (600-1¾)
CIRCLING	1120-2½ 573 (600-2½)	1200-2½ 653 (700-2½)	1500-3 953 (1000-3)	

REIL Rwy 6, 12, and 30 **0**  
MIRL Rwy 6-24 and 12-30 **0**