

|  |                        |   |
|--|------------------------|---|
| WAAS<br>CH <b>63105</b><br><b>W36A</b> | APP CRS<br><b>001°</b> | Rwy Idg <b>4997</b><br>TDZE <b>1181</b><br>Apt Elev <b>1191</b> |
|--|------------------------|---|

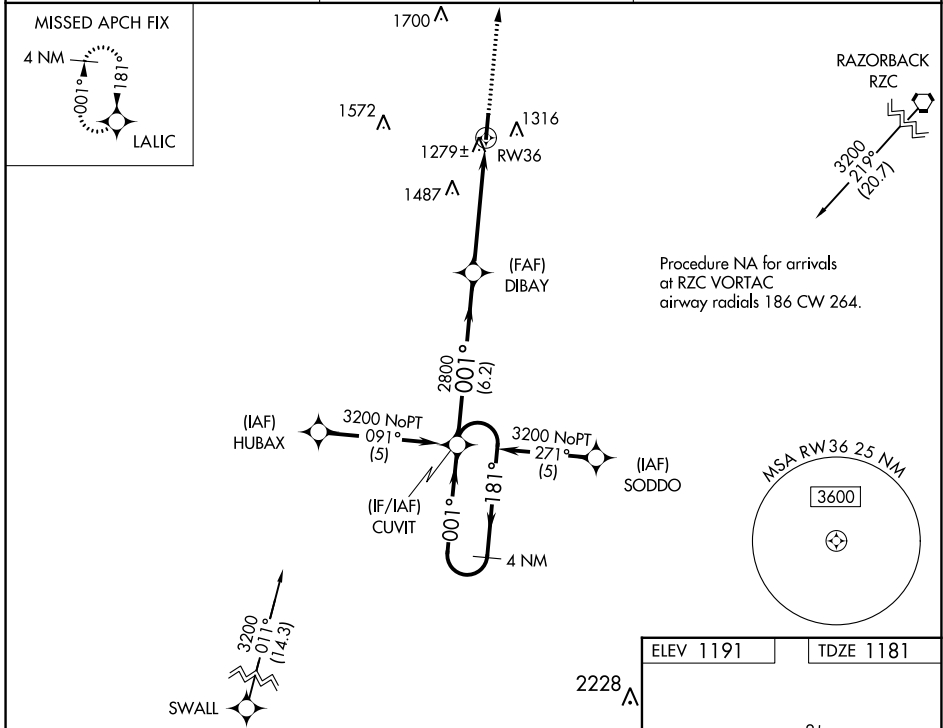
# RNAV (GPS) RWY 36

SMITH FLD (SLG)

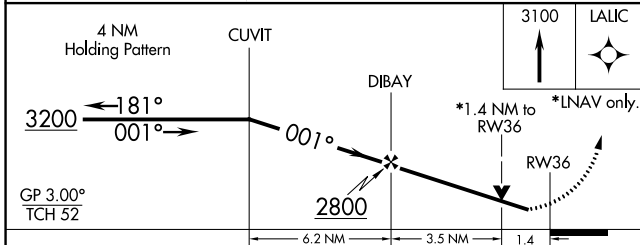
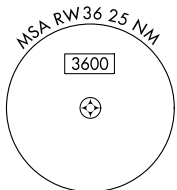
**⚠** When local altimeter setting not received, use Northwest Arkansas MSL altimeter setting and increase LPV DA to 1469 feet, increase LNAV/VNAV DA to 1587 feet; increase all MDAs 40 feet. For uncompensated Baro-VNAV systems, LNAV/VNAV NA below -17°C (2°F) or above 46°C (114°F). DME/DME RNP-0.3 NA. Visibility reduction by helicopters NA. Baro-VNAV and VDP NA when using Northwest Arkansas MSL altimeter setting.

MISSED APPROACH: Climb to 3100 direct LALIC and hold.

|                            |  |                                 |
|----------------------------|--|---------------------------------|
| AWOS-3PT<br><b>118.375</b> | RAZORBACK APP CON*<br><b>121.0 244.575</b> | UNICOM<br><b>122.8 (CTAF) 0</b> |
|----------------------------|--|---------------------------------|

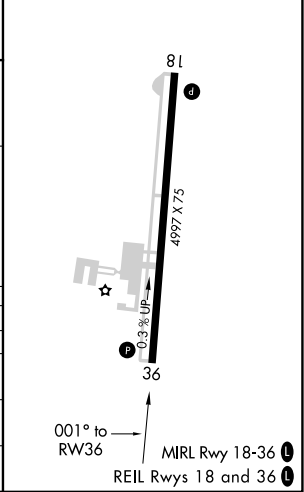


Procedure NA for arrivals at RZC VORTAC airway radials 186 CW 264.



|           |           |
|-----------|-----------|
| ELEV 1191 | TDZE 1181 |
|-----------|-----------|

| CATEGORY     | A                     | B                     | C                       | D                       |
|--------------|-----------------------|-----------------------|-------------------------|-------------------------|
| LPV DA       | 1431-1 250 (300-1)    |                       |                         |                         |
| LNAV/VNAV DA | 1549-1¼ 368 (400-1¼)  |                       |                         |                         |
| LNAV MDA     | 1660-1                | 479 (500-1)           | 1660-1¼<br>479 (500-1¼) | 1660-1½<br>479 (500-1½) |
| CIRCLING     | 1660-1<br>469 (500-1) | 1720-1<br>529 (600-1) | 1800-1¾<br>609 (700-1¾) | 1880-2¼<br>689 (700-2¼) |



SC-1, 26 DEC 2024 to 23 JAN 2025

SC-1, 26 DEC 2024 to 23 JAN 2025