

WAAS CH 58030 W14A	APP CRS 141°	Rwy Idg TDZE 1034 Apt Elev 1034	3999
--	------------------------	---	-------------

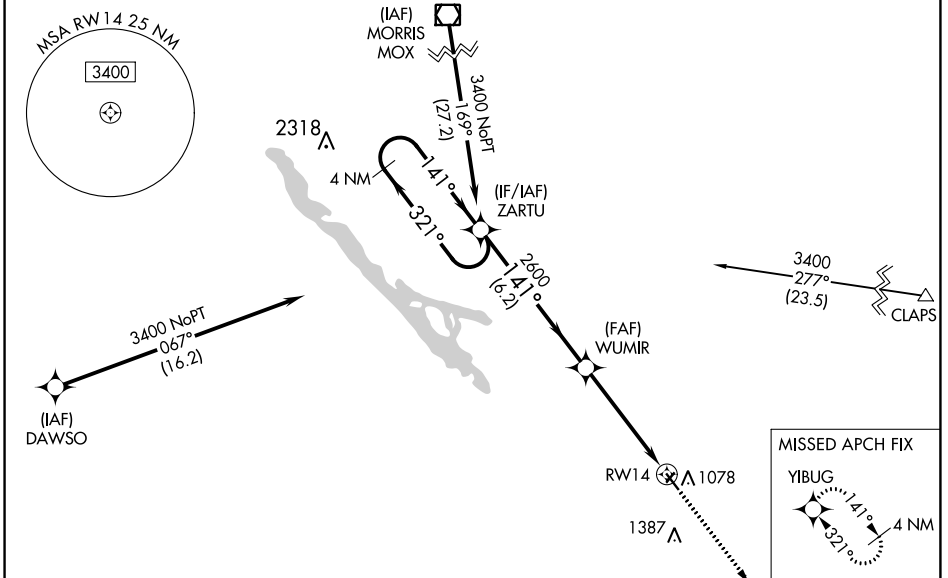
RNAV (GPS) RWY 14

MONTEVIDEO-CHIPPEWA COUNTY (MVE)

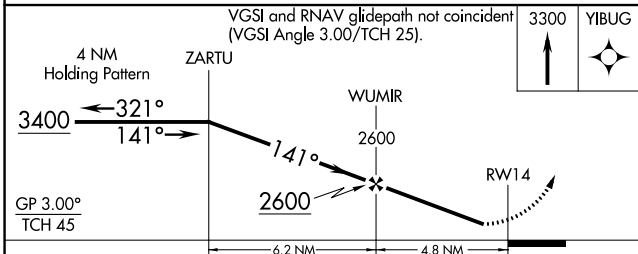
⚠ Baro-VNAV NA when using Granite Falls altimeter setting. For uncompensated Baro-VNAV systems, LNAV/VNAV NA below -30°C (-22°F) or above 54°C (130°F). When local altimeter setting not received, use Granite Falls altimeter setting and increase LPV DA to 1320 feet; increase LNAV/VNAV DA to 1320 feet; increase all MDAs 40 feet and LNAV visibility Cats C/D ½ SM and Circling visibility Cats C/D ¼ SM. DME/DME RNP-0.3 NA. Helicopter visibility reduction below 1 SM NA. When VGSi inop, Straight-in and Circling Rwy 14 procedures NA at night. Circling to Rwy 3-21 NA.

MISSED APPROACH:
Climb to 3300 direct YIBUG and hold.

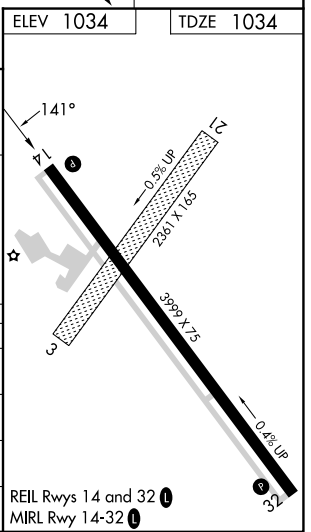
AWOS-3PT 119.675	MINNEAPOLIS CENTER 125.5 323.1	UNICOM 122.8 (CTAF) 0
----------------------------	--	---------------------------------



ELEV 1034	TDZE 1034
-----------	-----------



CATEGORY	A	B	C	D
LPV DA		1284-1	250 (300-1)	
LNAV/VNAV DA		1284-1	250 (300-1)	
LNAV MDA	1520-1 486 (500-1)		1520-1¾ 486 (500-1¾)	
CIRCLING	1560-1 526 (600-1)		1700-1¾ 666 (700-1¾)	1700-2 666 (700-2)



NC-1, 26 DEC 2024 to 23 JAN 2025

NC-1, 26 DEC 2024 to 23 JAN 2025