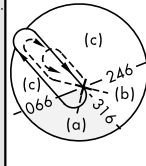
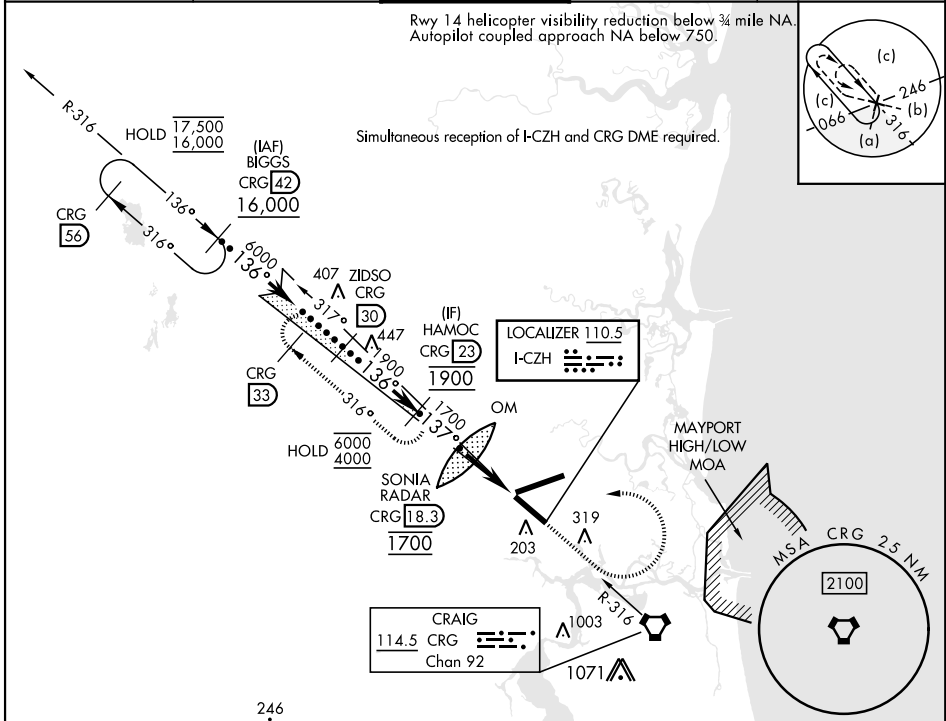


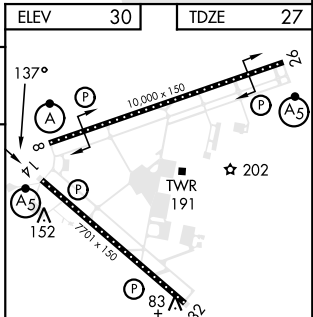
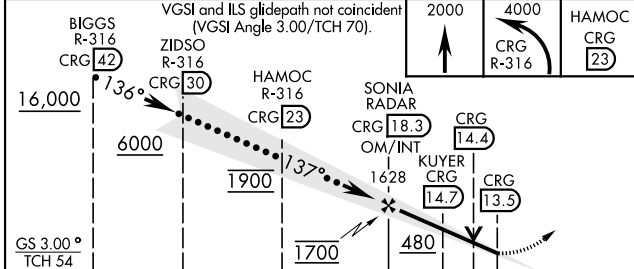
HI-ILS Z or LOC Z RWY 14

LOC I-CZH 110.5	APCH CRS 137°	Rwy Idg TDZE Arpt Elev 7701 27 30	[USAF]	JACKSONVILLE INTL (KJAX)
DME required. RADAR required for procedure entry.		MALSR	MISSED APPROACH: Climb to 2000 then climbing left turn to 4000 on CRG R-316 to HAMOC 23 DME and hold.	
* When ALS inop, increase vis to ¾ mile. ** When ALS inop, increase vis to 1 mile.		A5		

ATIS 125.85	APP CON 119.0 269.9	TOWER 118.3 317.7	GND CON 121.9 348.6	CLNC DEL 119.5 290.275
-----------------------	-------------------------------	-----------------------------	-------------------------------	----------------------------------



EMERG SAFE ALT 100 NM 2800 FROM CRG VORTAC	ELEV 30	TDZE 27
--	---------	---------



CATEGORY	C	D	E
S-ILS 14 *	227-½	200 (200-½)	
S-LOC 14 **	380-¾	353 (400-¾)	
CIRCLING	580-1½ 550 (600-1½)	640-2 610 (700-2)	760-2½ 730 (800-2½)

FAF to MAP 4.8 NM					
Knots	120	140	160	180	200
Min:Sec	2:24	2:03	1:48	1:36	1:26

HI-ILS Z or LOC Z RWY 14

SE-3, 26 DEC 2024 to 23 JAN 2025

SE-3, 26 DEC 2024 to 23 JAN 2025