

LOC I-CZH <b>110.5</b>	APP CRS <b>137°</b>	Rwy ldg TDZE Apt Elev <b>7701</b> <b>27</b> <b>30</b>
---------------------------	------------------------	--

# ILS Y or LOC Y RWY 14

JACKSONVILLE INTL (JAX)

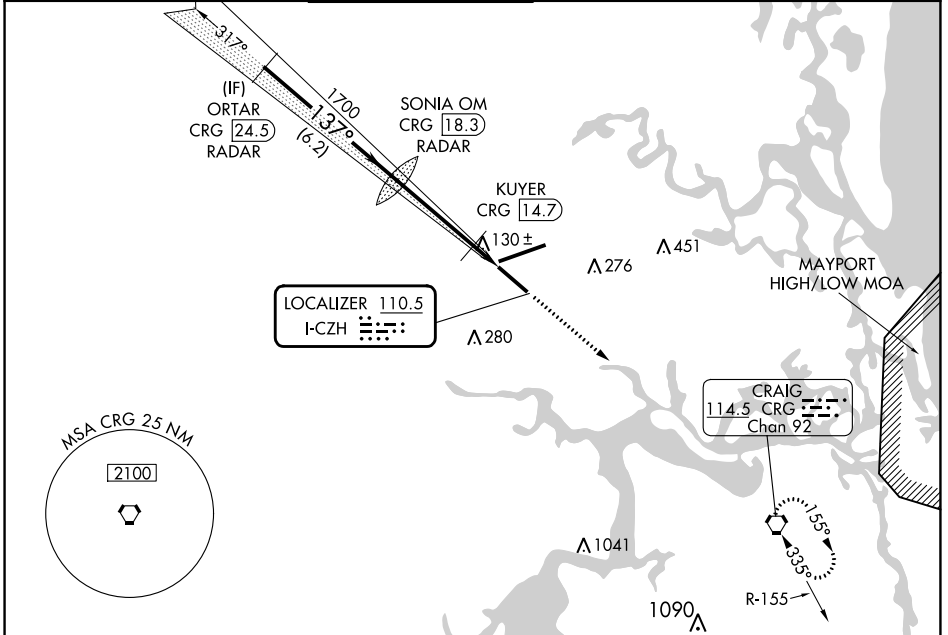
RADAR required for procedure entry, DME or RADAR required.

Autopilot coupled approach NA below 750 feet MSL. Rwy 14 helicopter visibility reduction below 3/4 SM NA. For inop ALS increase S-ILS 14 visibility all Cats to 3/8 SM, and increase S-LOC 14 Cats A and B visibility and KUYER Fix minimums S-LOC 14 visibility all to 1 SM.

MALSR

MISSED APPROACH:  
Climb to 3000 direct  
CRG VORTAC and hold.

D-ATIS <b>125.85</b>	JACKSONVILLE APP CON <b>119.0 269.9</b>	JACKSONVILLE TOWER <b>118.3 317.7</b>	GND CON <b>121.9 348.6</b>	CLNC DEL <b>119.5 290.275</b>	CPDLC
-------------------------	--	--	-------------------------------	----------------------------------	-------



VGSi and ILS glidepath not coincident (VGSi Angle 3.00/TCH 70).		3000	CRG	ELEV 30	TDZE 27
		↑	⬠		
GS 3.00° TCH 54	ORTAR CRG 24.5 RADAR	SONIA OM CRG 18.3 RADAR	KUYER CRG 14.7	CRG 13.5	
CATEGORY	A	B	C	D	
S-ILS 14	306-3/4 279 (300-3/4)				
S-LOC 14	480-3/4 453 (500-3/4)		480-7/8 453 (500-7/8)		
CIRCLING <input checked="" type="checkbox"/>	520-1 490 (500-1)		580-1 1/2 550 (600-1 1/2)	580-2 550 (600-2)	
KUYER FIX MINIMUMS (DME REQUIRED)					
S-LOC 14	380-3/4 353 (400-3/4)				
CIRCLING <input checked="" type="checkbox"/>	520-1 490 (500-1)		580-1 1/2 550 (600-1 1/2)	580-2 550 (600-2)	
REIL Rwy 32 TDZ/CL Rwys 8, 14, and 26 HIRL Rwys 8-26 and 14-32 FAF to MAP 4.8 NM					
Knots 60 90 120 150 180					
Min:Sec 4:48 3:12 2:24 1:55 1:36					

SE-3, 26 DEC 2024 to 23 JAN 2025

SE-3, 26 DEC 2024 to 23 JAN 2025