

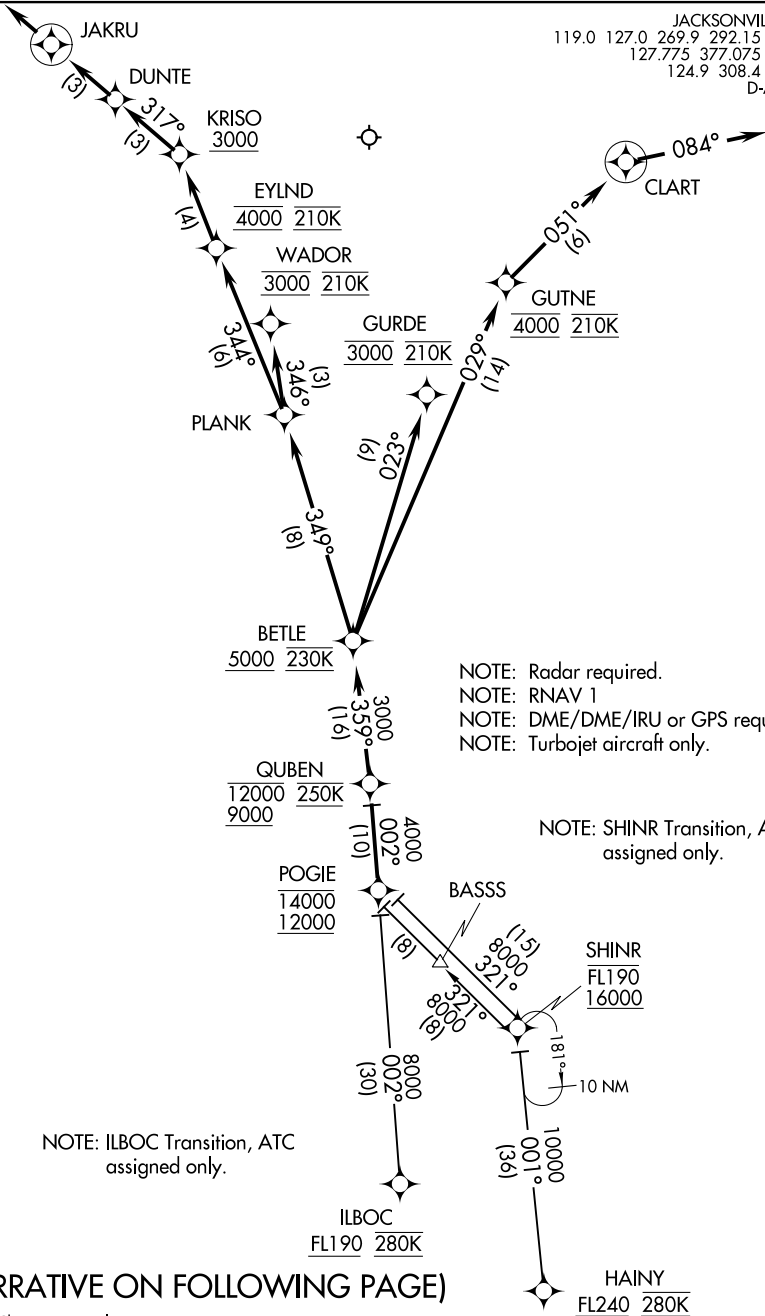
(QUBEN.QUBEN1) 18088

AL-5570 (FAA)

JACKSONVILLE INTL (JAX)  
JACKSONVILLE, FLORIDA

# QUBEN ONE ARRIVAL (RNAV)

JACKSONVILLE APP CON  
119.0 127.0 269.9 292.15 (270°-090°)  
127.775 377.075 (181°-269°)  
124.9 308.4 (091°-180°)  
D-ATIS 125.85



NOTE: Radar required.  
NOTE: RNAV 1  
NOTE: DME/DME/IRU or GPS required.  
NOTE: Turbojet aircraft only.

NOTE: SHINR Transition, ATC assigned only.

NOTE: ILBOC Transition, ATC assigned only.

(NARRATIVE ON FOLLOWING PAGE)

NOTE: Chart not to scale.

SE-3, 26 DEC 2024 to 23 JAN 2025

SE-3, 26 DEC 2024 to 23 JAN 2025

# QUBEN ONE ARRIVAL (RNAV)

(QUBEN.QUBEN1) 17OCT13

JACKSONVILLE, FLORIDA  
JACKSONVILLE INTL (JAX)

# QUBEN ONE ARRIVAL (RNAV)

## ARRIVAL ROUTE DESCRIPTION

HAINY TRANSITION (HAINY.QUBEN1)

ILBOC TRANSITION (ILBOC.QUBEN1)

SHINR TRANSITION (SHINR.QUBEN1)

From POGIE on track 002° to cross QUBEN between 9000 and 12000 and at 250K.

LANDING RWY 8: From QUBEN on track 359° to cross BETLE at or above 5000 and at 230K, then on track 349° to PLANK, then on track 346° to cross WADOR at 3000 and at 210K. Expect radar vectors to RNAV (RNP)/Visual approach as assigned by ATC.

LANDING RWY 14: From QUBEN on track 359° to cross BETLE at or above 5000 and at 230K, then on track 349° to PLANK, then on track 344° to cross EYLND at 4000 and at 210K, then on track 344° to cross KRISO at or above 3000, then on track 317° to DUNTE, then on track 317° to JAKRU, then on 317° track. Expect radar vectors to final approach course.

LANDING RWY 26: From QUBEN on track 359° to cross BETLE at or above 5000 and at 230K, then on track 029° to cross GUTNE at 4000 and at 210K, then on track 051° to CLART, then on 084° track. Expect radar vectors to final approach course.

LANDING RWY 32: From QUBEN on track 359° to cross BETLE at or above 5000 and at 230K, then on track 023° to cross GURDE at 3000 and at 210K. Expect radar vectors to RNAV (RNP)/Visual approach as assigned by ATC.

SE-3, 26 DEC 2024 to 23 JAN 2025

SE-3, 26 DEC 2024 to 23 JAN 2025