

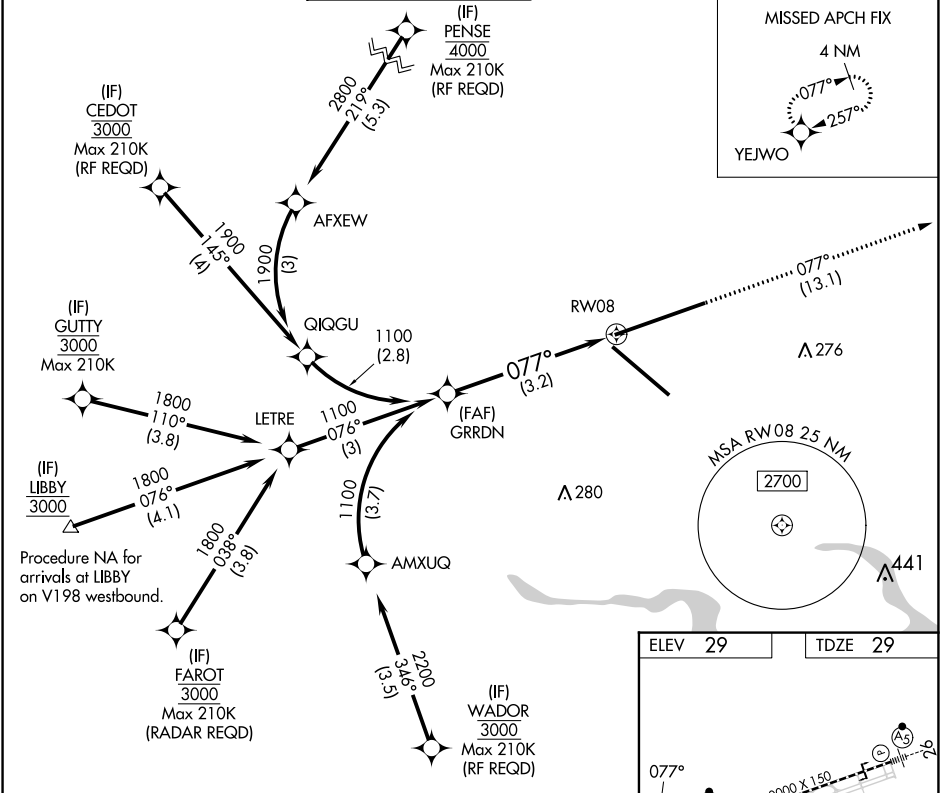
APP CRS	Rwy Idg	<b>10000</b>
<b>077°</b>	TDZE	<b>29</b>
	Apt Elev	<b>29</b>

# RNAV (RNP) Y RWY 8

JACKSONVILLE INTL (JAX)

<p>For uncompensated Baro-VNAV systems, procedure NAL below -5°C (23°F) or above 54°C (130°F). GPS required. For inop MALSR, increase RNP 0.11 all Cats visibility to 1 mile, increase RNP 0.30 all Cats visibility to 1½ mile.</p>	<p>ALSIF-2</p>	<p>MISSED APPROACH: Climb to 2000 on track 077° to YEJWO and hold.</p>
---	----------------	--

D-ATIS	JACKSONVILLE APP CON	JACKSONVILLE TOWER	GND CON	CLNC DEL	CPDLC
<b>125.85</b>	<b>119.0 269.9</b>	<b>118.3 317.7</b>	<b>121.9 348.6</b>	<b>119.5 290.275</b>	



VGSI and RNAV glidepath not coincident (VGSI Angle 3.00/TCH 70).

2000 YEJWO

tr 077°

1100

GP 3.00° TCH 51

See planview for multiple IF locations.

3.2 NM

CATEGORY	A	B	C	D
RNP 0.11 DA		356/40	327 (400-¾)	
RNP 0.30 DA		426/45	397 (400-¾)	

**AUTHORIZATION REQUIRED**

ELEV 29 TDZE 29

10000 X 150

700 X 150

TWR 201

REIL Rwy 32

TDZ/CL Rwy 8, 14, and 26

HIRL Rwy 8-26 and 14-32

SE-3, 26 DEC 2024 to 23 JAN 2025

SE-3, 26 DEC 2024 to 23 JAN 2025