

(TEBOW.TEBOW1) 18088

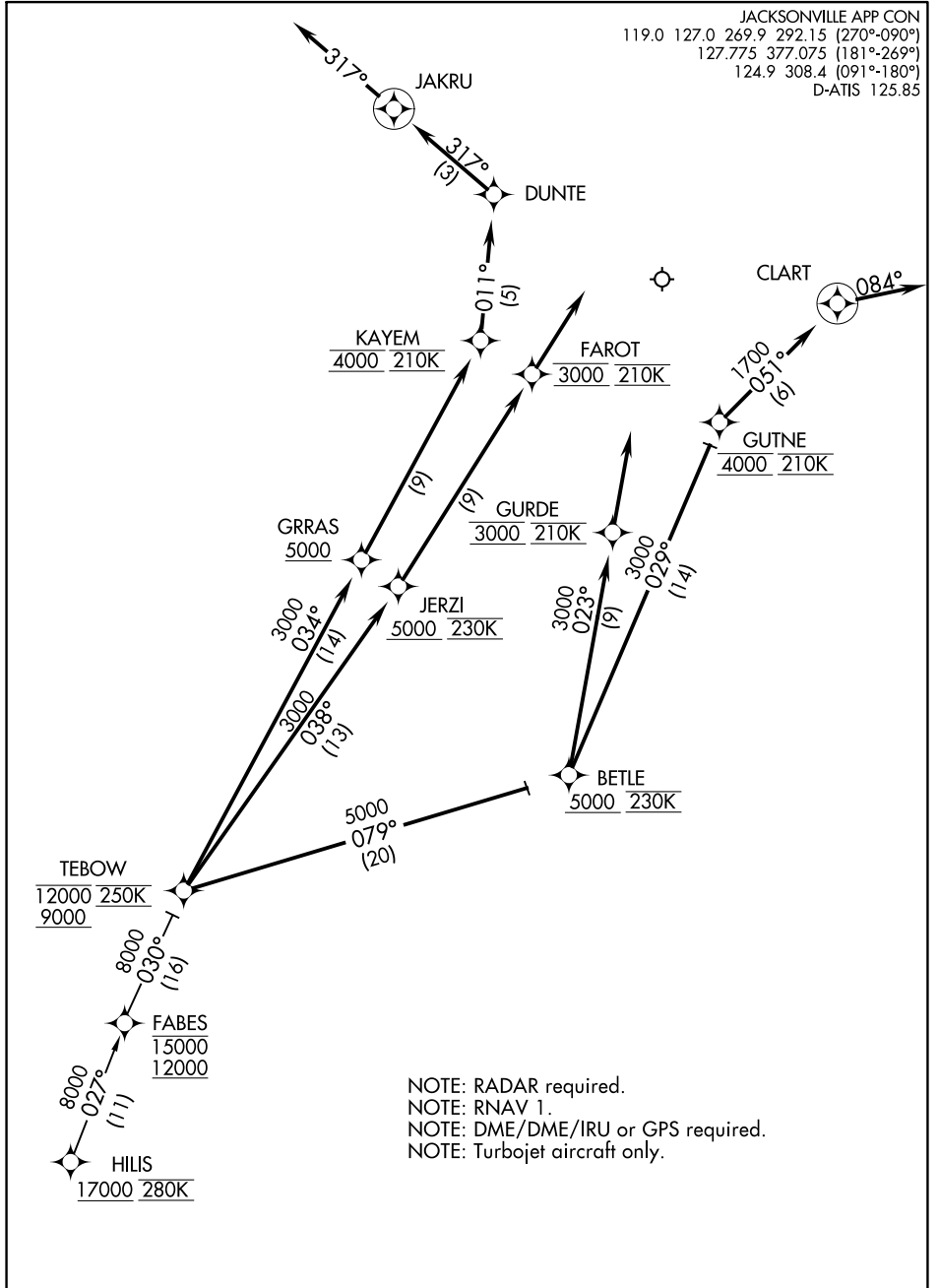
AL-5570 (FAA)

JACKSONVILLE INTL (JAX)

TEBOW ONE ARRIVAL (RNAV)

JACKSONVILLE, FLORIDA

JACKSONVILLE APP CON
 119.0 127.0 269.9 292.15 (270°-090°)
 127.775 377.075 (181°-269°)
 124.9 308.4 (091°-180°)
 D-ATIS 125.85



NOTE: RADAR required.
 NOTE: RNAV 1.
 NOTE: DME/DME/IRU or GPS required.
 NOTE: Turbojet aircraft only.

(NARRATIVE CONTINUED ON NEXT PAGE)

NOTE: Chart not to scale.

TEBOW ONE ARRIVAL (RNAV)

(TEBOW.TEBOW1) 13NOV14

JACKSONVILLE, FLORIDA
JACKSONVILLE INTL (JAX)

SE-3, 26 DEC 2024 to 23 JAN 2025

SE-3, 26 DEC 2024 to 23 JAN 2025

(TEBOW.TEBOW1) 17117

TEBOW ONE ARRIVAL (RNAV) AL-5570 (FAA)

JACKSONVILLE INTL (JAX)
JACKSONVILLE, FLORIDA

ARRIVAL ROUTE DESCRIPTION

HILIS TRANSITION (HILIS.TEBOW1)

From FABES on track 030° to cross TEBOW between 9000 and 12000 and at 250K.

LANDING RWY 8: From TEBOW on track 038° to cross JERZI at or above 5000 and at 230K, then on track 038° to cross FAROT at 3000 and at 210K. Expect ILS or LOC RWY 8.

LANDING RWY 14: From TEBOW on track 034° to cross GRRAS at or above 5000, then on track 034° to cross KAYEM at 4000 and at 210K, then on track 011° to DUNTE, then on track 317° to JAKRU, then on track 317°. Expect radar vectors to final approach course.

LANDING RWY 26: From TEBOW on track 079° to cross BETLE at or above 5000 and at 230K, then on track 029° to cross GUTNE at 4000 and at 210K, then on track 051° to CLART, then on track 084°. Expect radar vectors to final approach course.

LANDING RWY 32: From TEBOW on track 079° to cross BETLE at or above 5000 and at 230K, then on track 023° to cross GURDE at 3000 and at 210K. Expect ILS or LOC RWY 32.

SE-3, 26 DEC 2024 to 23 JAN 2025

SE-3, 26 DEC 2024 to 23 JAN 2025

TEBOW ONE ARRIVAL (RNAV)
(TEBOW.TEBOW1) 13NOV14

JACKSONVILLE, FLORIDA
JACKSONVILLE INTL (JAX)