

WAAS CH <b>45540</b> <b>W34A</b>	APP CRS <b>334°</b>	Rwy Idg TDZE <b>20</b> Apt Elev <b>20</b>	<b>4477</b>
--	------------------------	---	-------------

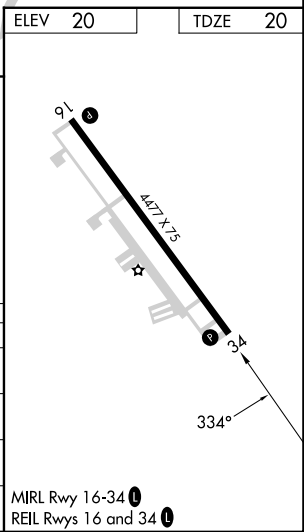
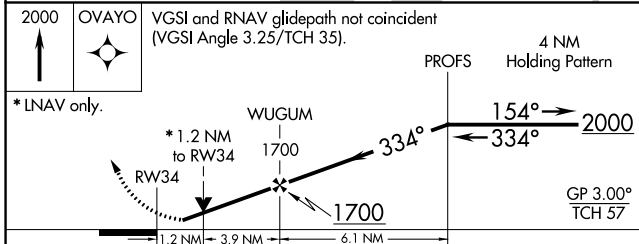
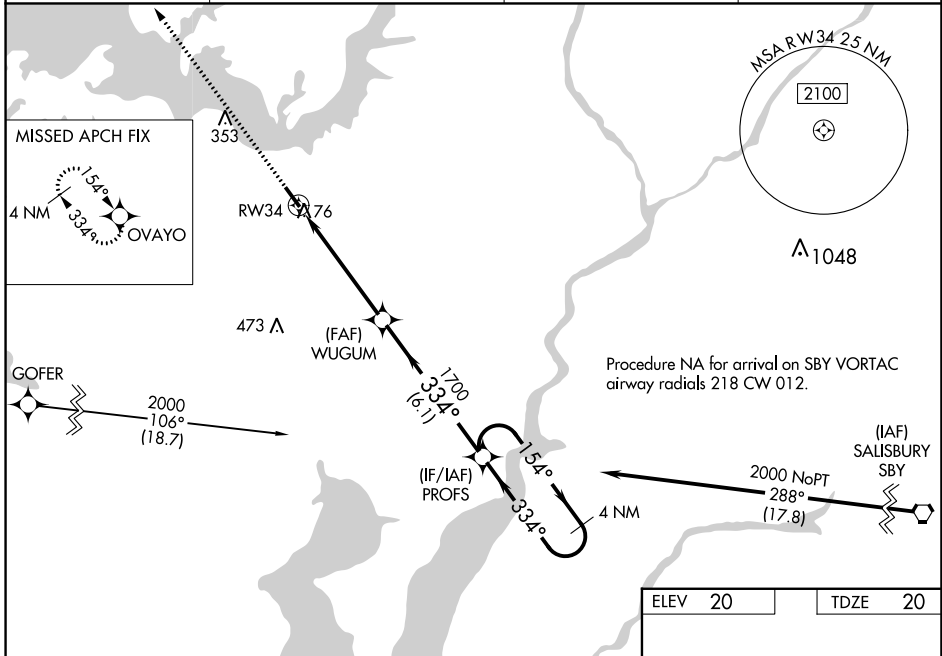
# RNAV (GPS) RWY 34

CAMBRIDGE-DORCHESTER RGNL (CGE)

**⚠** Circling NA at night. For uncompensated Baro-VNAV systems, LNAV/VNAV NA below -15°C (5°F) or above 54°C (130°F). Rwy 34 helicopter visibility reduction below ¾ SM NA. DME/DME RNP-0.3 NA.

**MISSED APPROACH:** Climb to 2000 direct OVAYO and hold.

AWOS-3 <b>120.675</b>	PATXENT APP CON * <b>121.0 250.3</b>	UNICOM <b>122.7 (CTAF)</b>	<b>121.9</b> <b>Ⓛ</b>
--------------------------	---	-------------------------------	-----------------------



CATEGORY	A	B	C	D
LPV DA		286- <sup>7</sup> / <sub>8</sub>	266 (300- <sup>7</sup> / <sub>8</sub> )	
LNAV/VNAV DA		309- <sup>7</sup> / <sub>8</sub>	289 (300- <sup>7</sup> / <sub>8</sub> )	
LNAV MDA	480-1 460 (500-1)		480-1 <sup>3</sup> / <sub>8</sub> 460 (500-1 <sup>3</sup> / <sub>8</sub> )	
<b>C</b> CIRCLING	480-1 460 (500-1)		660-1 <sup>3</sup> / <sub>4</sub> 640 (700-1 <sup>3</sup> / <sub>4</sub> )	780-2 <sup>1</sup> / <sub>2</sub> 760 (800-2 <sup>1</sup> / <sub>2</sub> )

MIRL Rwy 16-34 **Ⓛ**  
REIL Rws 16 and 34 **Ⓛ**

NE-3, 26 DEC 2024 to 23 JAN 2025

NE-3, 26 DEC 2024 to 23 JAN 2025