

**TOP ALTITUDE:
ASSIGNED BY ATC**

(A)EX3.(A)E1 24137
ALEXANDRIA THREE DEPARTURE

A1-5573 (FAA)

CONROE/NORTH HOUSTON RGNL (CXO)
HOUSTON, TEXAS

ATIS
118.325
CLNC DEL
120.45
CLNC DEL
119.55 (when twr closed)
GND CON
120.45
CONROE TOWER *
124.125 (CTAF)
HOUSTON DEP CON
119.7 281.4

LUFKIN
112.1 LFK
Chan 58

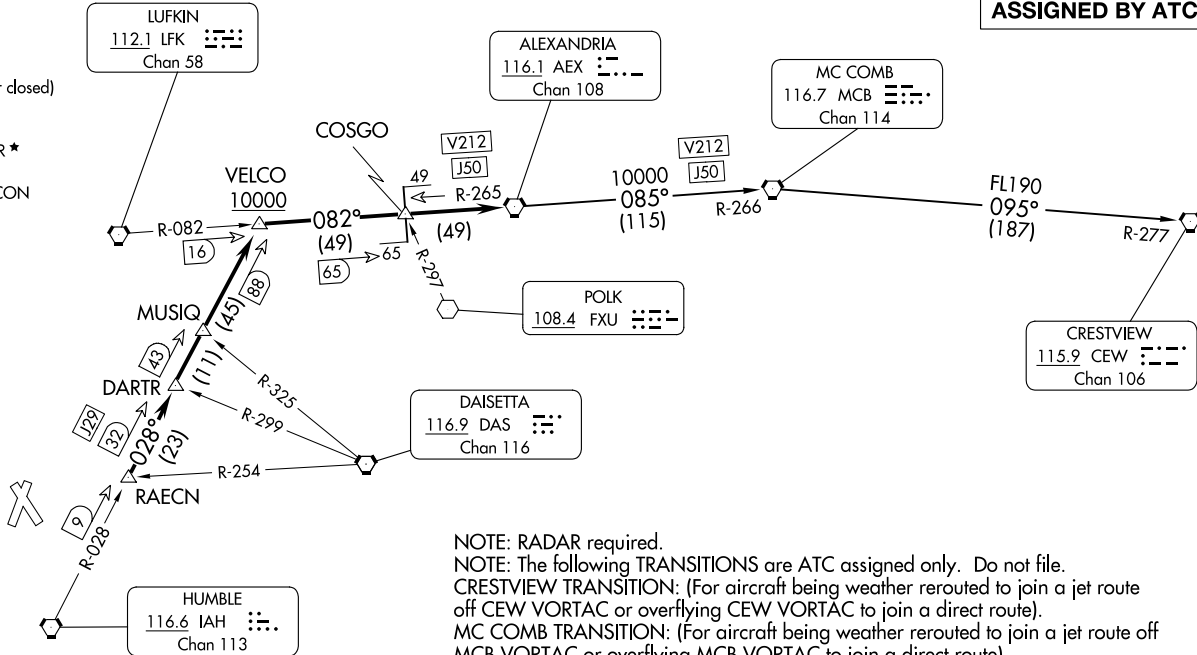
ALEXANDRIA
116.1 AEX
Chan 108

MC COMB
116.7 MCB
Chan 114

POLK
108.4 FXU

DAISETTA
116.9 DAS
Chan 116

HUMBLE
116.6 IAH
Chan 113



TAKEOFF MINIMUMS
Rwys 1, 14, 19, 32: Standard.

NOTE: RADAR required.
NOTE: The following TRANSITIONS are ATC assigned only. Do not file.
CRESTVIEW TRANSITION: (For aircraft being weather rerouted to join a jet route off CEW VORTAC or overflying CEW VORTAC to join a direct route).
MC COMB TRANSITION: (For aircraft being weather rerouted to join a jet route off MCB VORTAC or overflying MCB VORTAC to join a direct route).

(CONTINUED ON FOLLOWING PAGE)

NOTE: Chart not to scale.

ALEXANDRIA THREE DEPARTURE
(A)EX3.(A)E1 070CT121

HOUSTON, TEXAS
CONROE/NORTH HOUSTON RGNL (CXO)



ALEXANDRIA THREE DEPARTURE



DEPARTURE ROUTE DESCRIPTION

TAKEOFF ALL RUNWAYS: When entering controlled airspace, climb on assigned heading for RADAR vectors to RAECN INT. Maintain ATC assigned altitude. Expect filed altitude 10 minutes after departure, thence. . . .

. . . .on IAH R-028 to VELCO INT, cross VELCO INT at or above 10000, then right turn on LFK R-082 and AEX R-265 to AEX VORTAC.

CRESTVIEW TRANSITION (AEX3.CEW): From over AEX VORTAC on AEX R-085 and MCB R-266 to MCB VORTAC, then on MCB R-095 and CEW R-277 to CEW VORTAC.

MC COMB TRANSITION (AEX3.MCB): From over AEX VORTAC on AEX R-085 and MCB R-266 to MCB VORTAC.

SC-5, 26 DEC 2024 to 23 JAN 2025

SC-5, 26 DEC 2024 to 23 JAN 2025