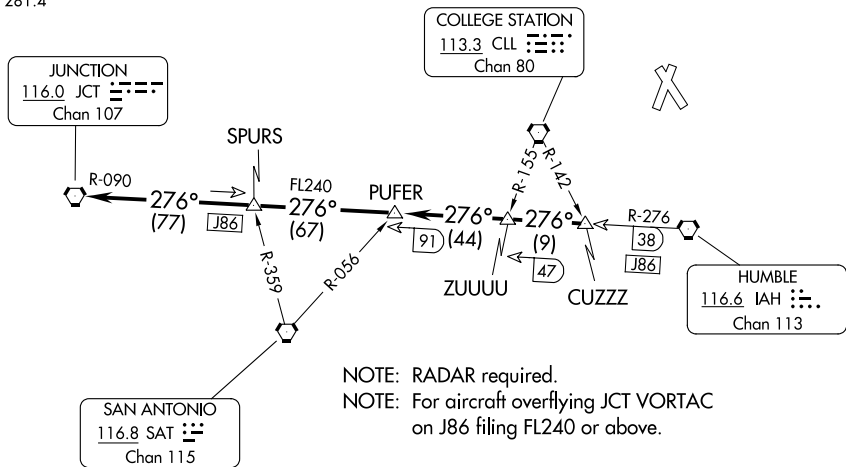


# JUNCTION ONE DEPARTURE

**TOP ALTITUDE:  
ASSIGNED BY ATC**

ATIS  
118.325  
CLNC DEL  
120.45  
CLNC DEL (when twr closed)  
119.55  
GND CON  
120.45  
CONROE TOWER \*  
124.125  
HOUSTON DEP CON  
119.7 281.4



NOTE: RADAR required.  
NOTE: For aircraft overflying JCT VORTAC  
on J86 filing FL240 or above.

TAKEOFF MINIMUMS  
Rwys 1, 14, 19, 32: Standard.

NOTE: Chart not to scale.



## DEPARTURE ROUTE DESCRIPTION

TAKEOFF ALL RUNWAYS: When entering controlled airspace, climb on assigned heading for RADAR vectors to CUZZZ INT. Maintain ATC assigned altitude. Expect filed altitude 10 minutes after departure, thence . . . .

. . . . on IAH R-276 and JCT R-090 to JCT VORTAC.

SC-5, 26 DEC 2024 to 23 JAN 2025

SC-5, 26 DEC 2024 to 23 JAN 2025