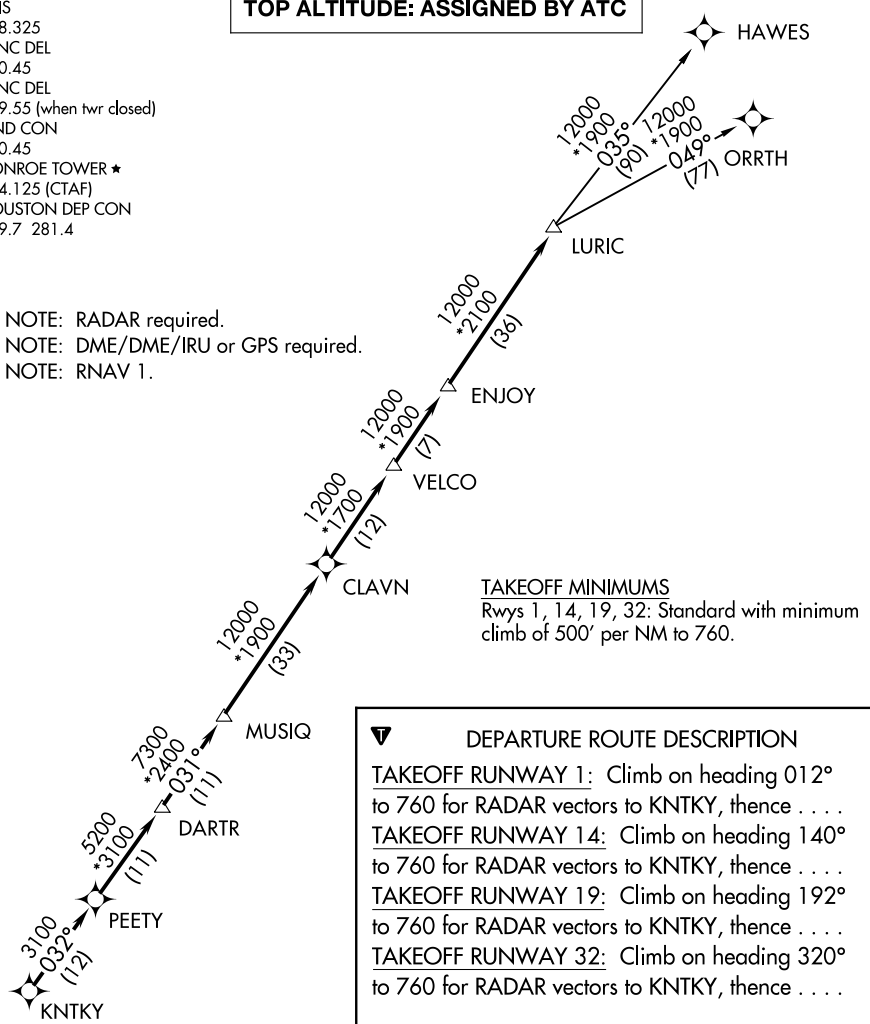


# LURIC EIGHT DEPARTURE (RNAV)

ATIS  
 118.325  
 CLNC DEL  
 120.45  
 CLNC DEL  
 119.55 (when twr closed)  
 GND CON  
 120.45  
 CONROE TOWER ★  
 124.125 (CTAF)  
 HOUSTON DEP CON  
 119.7 281.4

**TOP ALTITUDE: ASSIGNED BY ATC**

NOTE: RADAR required.  
 NOTE: DME/DME/IRU or GPS required.  
 NOTE: RNAV 1.



**TAKEOFF MINIMUMS**  
 Rwy's 1, 14, 19, 32: Standard with minimum climb of 500' per NM to 760.

**DEPARTURE ROUTE DESCRIPTION**

**TAKEOFF RUNWAY 1:** Climb on heading 012° to 760 for RADAR vectors to KNTKY, then . . .

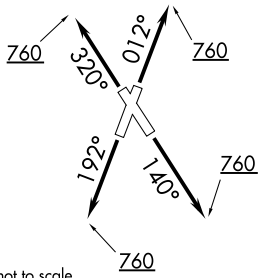
**TAKEOFF RUNWAY 14:** Climb on heading 140° to 760 for RADAR vectors to KNTKY, then . . .

**TAKEOFF RUNWAY 19:** Climb on heading 192° to 760 for RADAR vectors to KNTKY, then . . .

**TAKEOFF RUNWAY 32:** Climb on heading 320° to 760 for RADAR vectors to KNTKY, then . . .

. . . on track 032° to PEETY, then on track 032° to DARTR, then on track 031° to MUSIQ, then on track 031° to CLAVN, then on track 031° to VELCO, then on track 031° to ENJOY, then on track 031° to LURIC, then on (transition). Maintain ATC assigned altitude. Expect filed altitude 10 minutes after departure.

**HAWES TRANSITION (LURIC8.HAWES)**  
**ORRTH TRANSITION (LURIC8.ORRTH)**



NOTE: Chart not to scale.

SC-5, 26 DEC 2024 to 23 JAN 2025

SC-5, 26 DEC 2024 to 23 JAN 2025