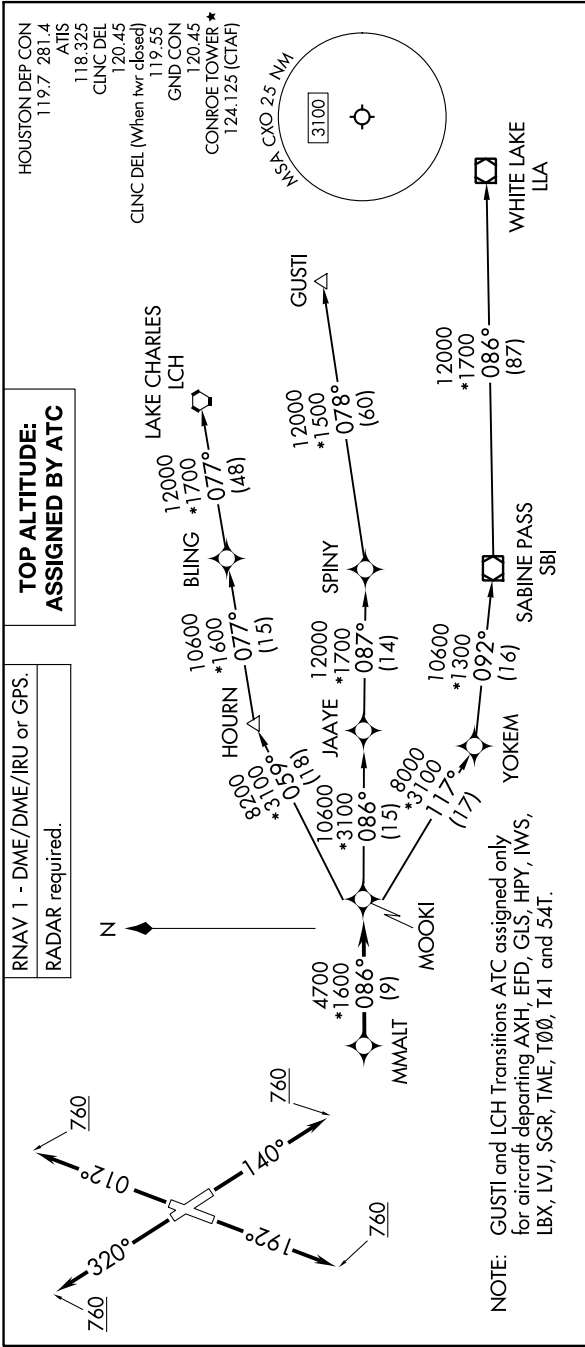


MMALT SEVEN DEPARTURE (RNAV)



RNAV 1 - DME/DME/IRU or GPS.
 RADAR required.

**TOP ALTITUDE:
 ASSIGNED BY ATC**

HOUSTON DEP CON
 119.7 281.4
 ATIS
 118.325
 CLNC DEL
 120.45
 CLNC DEL (When twr closed)
 119.55
 GND CON
 120.45
 CONROE TOWER*
 124.125 (CTAF)

NOTE: GUSTI and LCH Transitions ATC assigned only for aircraft departing AXH, EFD, GLS, HPY, IWS, LBX, LVJ, SGR, TME, T00, T41 and 54T.

DEPARTURE ROUTE DESCRIPTION

TAKEOFF RUNWAY 1: Climb on heading 012° to 760, for RADAR vectors to MMALT, thence. . . .
TAKEOFF RUNWAY 14: Climb on heading 140° to 760, for RADAR vectors to MMALT, thence. . . .
TAKEOFF RUNWAY 19: Climb on heading 192° to 760, for RADAR vectors to MMALT, thence. . . .
TAKEOFF RUNWAY 32: Climb on heading 320° to 760, for RADAR vectors to MMALT, thence. . . .
 . . . on track 086° to MOOKI, then on (transition). Maintain ATC assigned altitude.
 Expect filed altitude 10 minutes after departure.

TAKEOFF MINIMUMS
 Rlys 1, 14, 19, 32: Standard with minimum climb of 500'/NM to 760.

GUSTI TRANSITION (MMALT7.GUSTI)
 LAKE CHARLES TRANSITION (MMALT7.LCH)
 WHITE LAKE TRANSITION (MMALT7.LLA)

NOTE: Chart not to scale.