

WAAS CH 62819 W32A	APP CRS 321°	Rwy Idg TDZE Apt Elev	7501 245 245
--	------------------------	-----------------------------	---

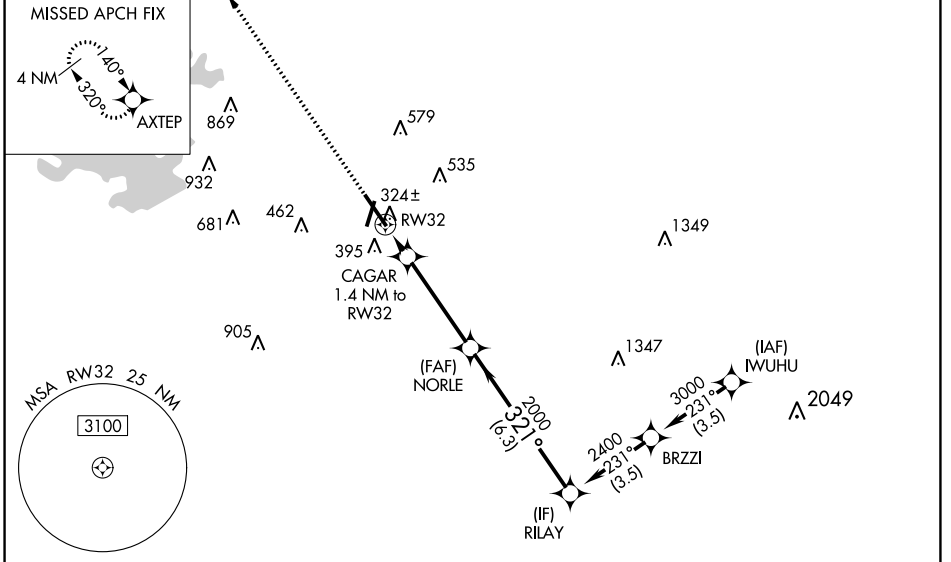
RNAV (GPS) RWY 32

CONROE/NORTH HOUSTON RGNL (CXXO)

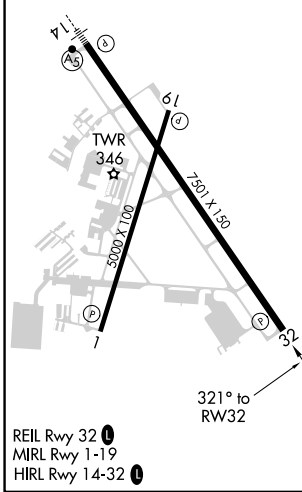
⚠ For uncompensated Baro-VNAV systems, LNAV/VNAV NA below -6°C (-22°F) or above 54°C (130°F). DME/DME RNP-0,3 NA.
⚠ Rwy 32 helicopter visibility reduction below ¾ SM NA.

MISSED APPROACH: Climb to 2100 direct AXTEP and hold.

ATIS 118.325	HOUSTON APP CON 119.7 281.4	CONROE TOWER * 124.125 (CTAF) 0	GND CON 120.45	CLNC DEL 120.45	CLNC DEL 119.55 (When twr closed)
------------------------	---------------------------------------	---	--------------------------	---------------------------	--



ELEV 245	D	TDZE 245
-----------------	----------	-----------------



2100	AXTEP				
*LNAV only.	CAGAR 1.4 NM to RW32	NORLE 2000	RILAY 2400	GP 3.00° TCH 50	
	RW32	720*	2000		
	+1.4 NM	4 NM	6.3 NM		
CATEGORY	A	B	C	D	
LPV DA		495-¾	250 (300-¾)		
LNAV/VNAV DA		505-⅞	260 (300-⅞)		
LNAV MDA		580-1	335 (400-1)		
C CIRCLING	700-1	455 (500-1)	880-1¾ 635 (700-1¾)	960-2¼ 715 (800-2¼)	

SC-5, 26 DEC 2024 to 23 JAN 2025

SC-5, 26 DEC 2024 to 23 JAN 2025